

PPP2R5B Antibody (C-term)
Purified Rabbit Polyclonal Antibody (Pab)
Catalog # AP20958c**Specification**

PPP2R5B Antibody (C-term) - Product Information

Application	IF, WB,E
Primary Accession	Q15173
Reactivity	Human
Host	Rabbit
Clonality	Polyclonal
Isotype	Rabbit IgG
Calculated MW	57393

PPP2R5B Antibody (C-term) - Additional Information**Gene ID** 5526**Other Names**

Serine/threonine-protein phosphatase 2A 56 kDa regulatory subunit beta isoform, PP2A B subunit isoform B'-beta, PP2A B subunit isoform B56-beta, PP2A B subunit isoform PR61-beta, PP2A B subunit isoform R5-beta, PPP2R5B

Target/Specificity

This PPP2R5B antibody is generated from a rabbit immunized with a KLH conjugated synthetic peptide between 466-500 amino acids from the C-terminal region of human PPP2R5B.

Dilution

IF~~1:25

WB~~1:1000

E~~Use at an assay dependent concentration.

Format

Purified polyclonal antibody supplied in PBS with 0.09% (W/V) sodium azide. This antibody is purified through a protein A column, followed by peptide affinity purification.

Storage

Maintain refrigerated at 2-8°C for up to 2 weeks. For long term storage store at -20°C in small aliquots to prevent freeze-thaw cycles.

Precautions

PPP2R5B Antibody (C-term) is for research use only and not for use in diagnostic or therapeutic procedures.

PPP2R5B Antibody (C-term) - Protein Information**Name** PPP2R5B

Function As the regulatory component of the serine/threonine-protein phosphatase 2A (PP2A) holoenzyme, modulates substrate specificity, subcellular localization, and responsiveness to phosphorylation. The phosphorylated form mediates the interaction between PP2A and AKT1, leading to AKT1 dephosphorylation.

Cellular Location

Cytoplasm.

Tissue Location

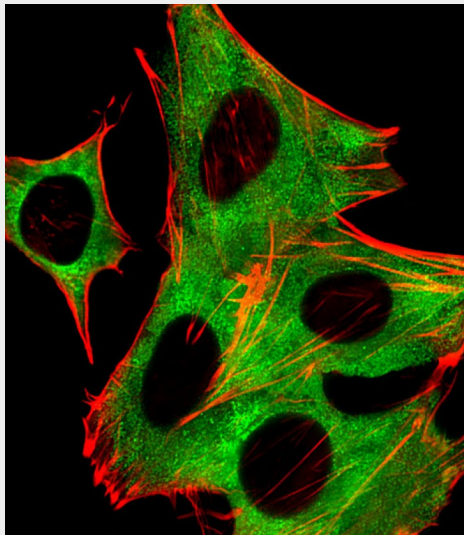
Highest expression in brain.

PPP2R5B Antibody (C-term) - Protocols

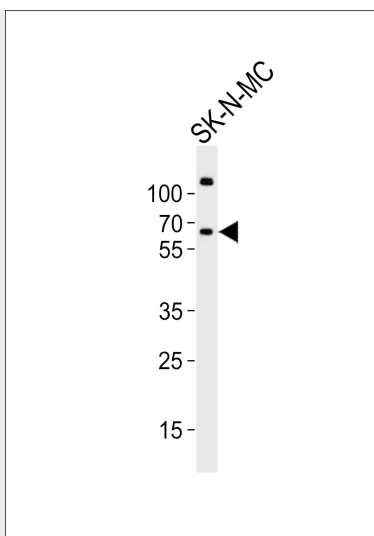
Provided below are standard protocols that you may find useful for product applications.

- [Western Blot](#)
- [Blocking Peptides](#)
- [Dot Blot](#)
- [Immunohistochemistry](#)
- [Immunofluorescence](#)
- [Immunoprecipitation](#)
- [Flow Cytometry](#)
- [Cell Culture](#)

PPP2R5B Antibody (C-term) - Images



Fluorescent image of SH-SY5Y cells stained with PPP2R5B Antibody (C-term)(Cat#AP20958c). AP20958c was diluted at 1:25 dilution. An Alexa Fluor 488-conjugated goat anti-rabbit IgG at 1:400 dilution was used as the secondary antibody (green). Cytoplasmic actin was counterstained with Alexa Fluor® 555 conjugated with Phalloidin (red).



Western blot analysis of lysate from SK-N-MC cell line, using PPP2R5B Antibody (C-term)(Cat. #AP20958c). AP20958c was diluted at 1:1000. A goat anti-rabbit IgG H&L(HRP) at 1:10000 dilution was used as the secondary antibody. Lysate at 20ug.

PPP2R5B Antibody (C-term) - Background

The B regulatory subunit might modulate substrate selectivity and catalytic activity, and also might direct the localization of the catalytic enzyme to a particular subcellular compartment. The phosphorylated form mediates the interaction between AKT1 and PP2A phosphatase leading to dephosphorylation of AKT1 on the 'Thr-308' and 'Ser-373' residues.

PPP2R5B Antibody (C-term) - References

McCright B.,et al.J. Biol. Chem. 270:26123-26128(1995).
Zolnierowicz S.,et al.Biochem. J. 317:187-194(1996).
McCright B.,et al.J. Biol. Chem. 271:22081-22089(1996).
Kitajima T.S.,et al.Nature 441:46-52(2006).
Rodgers J.T.,et al.Mol. Cell 41:471-479(2011).