

**DLK1 Antibody (C-term)**  
**Purified Rabbit Polyclonal Antibody (Pab)**  
**Catalog # AP20959c**

**Specification**

---

**DLK1 Antibody (C-term) - Product Information**

Application	WB, IHC-P, FC,E
Primary Accession	<a href="#">P80370</a>
Reactivity	Human, Mouse
Host	Rabbit
Clonality	Polyclonal
Isotype	Rabbit IgG
Calculated MW	41300
Antigen Region	368-402

**DLK1 Antibody (C-term) - Additional Information**

**Gene ID** 8788

**Other Names**

Protein delta homolog 1, DLK-1, pG2, Fetal antigen 1, FA1, DLK1, DLK

**Target/Specificity**

This DLK1 antibody is generated from a rabbit immunized with a KLH conjugated synthetic peptide between 368-402 amino acids from the C-terminal region of human DLK1.

**Dilution**

WB~~1:1000

IHC-P~~1:25

FC~~1:25

**Format**

Purified polyclonal antibody supplied in PBS with 0.09% (W/V) sodium azide. This antibody is purified through a protein A column, followed by peptide affinity purification.

**Storage**

Maintain refrigerated at 2-8°C for up to 2 weeks. For long term storage store at -20°C in small aliquots to prevent freeze-thaw cycles.

**Precautions**

DLK1 Antibody (C-term) is for research use only and not for use in diagnostic or therapeutic procedures.

**DLK1 Antibody (C-term) - Protein Information**

**Name** DLK1

**Synonyms** DLK

**Function** May have a role in neuroendocrine differentiation.

**Cellular Location**

Membrane; Single-pass type I membrane protein. Cytoplasm {ECO:0000250|UniProtKB:O70534}

**Tissue Location**

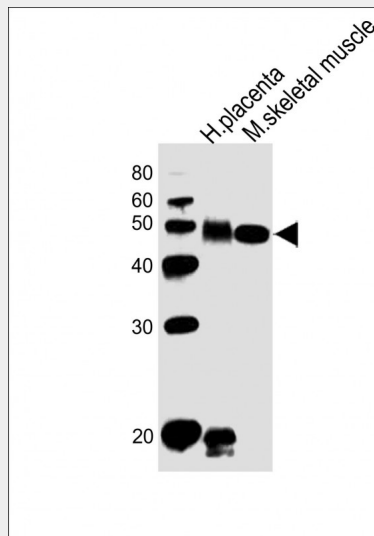
Found within the stromal cells in close contact to the vascular structure of placental villi, yolk sac, fetal liver, adrenal cortex and pancreas and in the beta cells of the islets of Langerhans in the adult pancreas. Found also in some forms of neuroendocrine lung tumor tissue

**DLK1 Antibody (C-term) - Protocols**

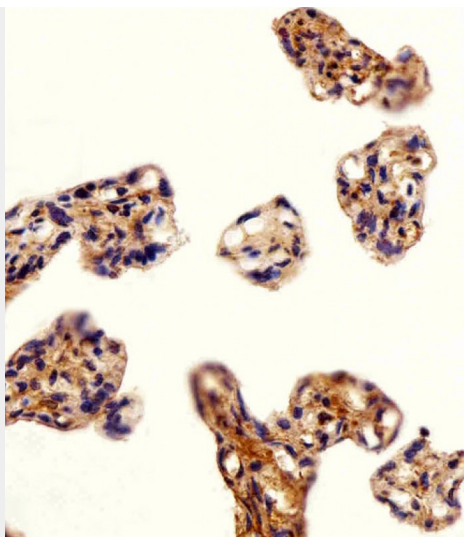
Provided below are standard protocols that you may find useful for product applications.

- [Western Blot](#)
- [Blocking Peptides](#)
- [Dot Blot](#)
- [Immunohistochemistry](#)
- [Immunofluorescence](#)
- [Immunoprecipitation](#)
- [Flow Cytometry](#)
- [Cell Culture](#)

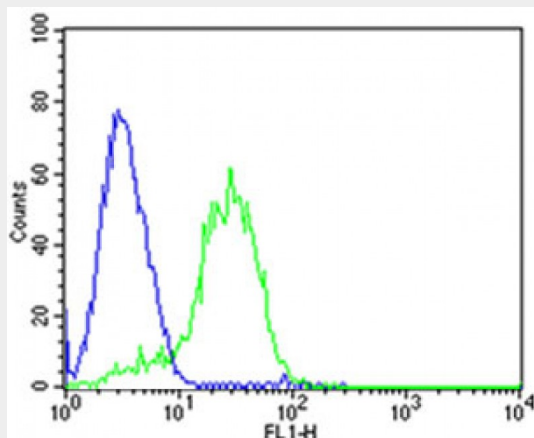
**DLK1 Antibody (C-term) - Images**



All lanes : Anti-DLK1 Antibody (C-term) at 1:1000 dilution Lane 1: human placenta lysates Lane 2: mouse skeletal muscle lysates Lysates/proteins at 20 µg per lane. Secondary Goat Anti-Rabbit IgG, (H+L), Peroxidase conjugated at 1/10000 dilution Predicted band size : 41 kDa Blocking/Dilution buffer: 5% NFDM/TBST.



Immunohistochemical analysis of paraffin-embedded H. placenta section using DLK1 Antibody (C-term)(Cat#AP20959c). AP20959c was diluted at 1:25 dilution. A undiluted biotinylated goat polyvalent antibody was used as the secondary, followed by DAB staining.



Flow cytometric analysis of HepG2 cells using DLK1 Antibody (C-term)(green, Cat#AP20959c) compared to an isotype control of mouse IgG2b(blue). AP20959c was diluted at 1:25 dilution. An Alexa Fluor® 488 goat anti-mouse IgG at 1:400 dilution was used as the secondary antibody.

**DLK1 Antibody (C-term) - Background**

May have a role in neuroendocrine differentiation.

**DLK1 Antibody (C-term) - References**

Laborda J.,et al.J. Biol. Chem. 268:3817-3820(1993).  
 Lee Y.L.,et al.Biochim. Biophys. Acta 1261:223-232(1995).  
 Helman L.J.,et al.Nucleic Acids Res. 18:685-685(1990).  
 Heilig R.,et al.Nature 421:601-607(2003).  
 Jensen C.H.,et al.Eur. J. Biochem. 225:83-92(1994).

**DLK1 Antibody (C-term) - Citations**

- [Endoglin Is Essential for the Maintenance of Self-Renewal and Chemoresistance in Renal Cancer Stem Cells.](#)