

**PCGF1 Antibody (Center)**  
**Purified Rabbit Polyclonal Antibody (Pab)**  
**Catalog # AP20960a**

**Specification**

---

**PCGF1 Antibody (Center) - Product Information**

Application	WB,E
Primary Accession	<a href="#">Q9BSM1</a>
Other Accession	<a href="#">Q8R023</a> , <a href="#">Q2YDF9</a>
Reactivity	Human, Mouse, Rat
Predicted	Bovine
Host	Rabbit
Clonality	Polyclonal
Isotype	Rabbit IgG
Calculated MW	30346
Antigen Region	117-151

**PCGF1 Antibody (Center) - Additional Information**

**Gene ID** 84759

**Other Names**

Polycomb group RING finger protein 1, Nervous system Polycomb-1, NSPc1, RING finger protein 68, PCGF1, NSPC1, RNF68

**Target/Specificity**

This PCGF1 antibody is generated from a rabbit immunized with a KLH conjugated synthetic peptide between 117-151 amino acids from the Central region of human PCGF1.

**Dilution**

WB~~1:1000

E~~Use at an assay dependent concentration.

**Format**

Purified polyclonal antibody supplied in PBS with 0.09% (W/V) sodium azide. This antibody is purified through a protein A column, followed by peptide affinity purification.

**Storage**

Maintain refrigerated at 2-8°C for up to 2 weeks. For long term storage store at -20°C in small aliquots to prevent freeze-thaw cycles.

**Precautions**

PCGF1 Antibody (Center) is for research use only and not for use in diagnostic or therapeutic procedures.

**PCGF1 Antibody (Center) - Protein Information**

**Name** PCGF1

## Synonyms NSPC1, RNF68

**Function** Component of the Polycomb group (PcG) multiprotein BCOR complex, a complex required to maintain the transcriptionally repressive state of some genes, such as BCL6 and the cyclin-dependent kinase inhibitor, CDKN1A. Transcriptional repressor that may be targeted to the DNA by BCL6; this transcription repressor activity may be related to PKC signaling pathway. Represses CDKN1A expression by binding to its promoter, and this repression is dependent on the retinoic acid response element (RARE element). Promotes cell cycle progression and enhances cell proliferation as well. May have a positive role in tumor cell growth by down-regulating CDKN1A. Component of a Polycomb group (PcG) multiprotein PRC1-like complex, a complex class required to maintain the transcriptionally repressive state of many genes, including Hox genes, throughout development. PcG PRC1 complex acts via chromatin remodeling and modification of histones; it mediates monoubiquitination of histone H2A 'Lys-119', rendering chromatin heritably changed in its expressibility (PubMed:[26151332](#)). Within the PRC1-like complex, regulates RNF2 ubiquitin ligase activity (PubMed:[26151332](#)). Regulates the expression of DPPA4 and NANOG in the NT2 embryonic carcinoma cells (PubMed:[26687479](#)).

## Cellular Location

Nucleus

## Tissue Location

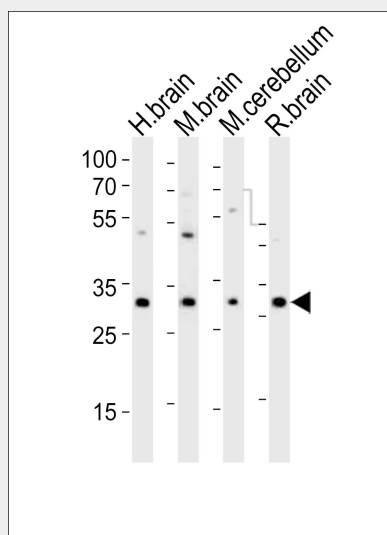
Ubiquitous..

## PCGF1 Antibody (Center) - Protocols

Provided below are standard protocols that you may find useful for product applications.

- [Western Blot](#)
- [Blocking Peptides](#)
- [Dot Blot](#)
- [Immunohistochemistry](#)
- [Immunofluorescence](#)
- [Immunoprecipitation](#)
- [Flow Cytometry](#)
- [Cell Culture](#)

## PCGF1 Antibody (Center) - Images



Western blot analysis of lysates from human brain, mouse brain, mouse cerebellum, rat brain tissue (from left to right), using PCGF1 Antibody (Center)(Cat. #AP20960a). AP20960a was diluted at 1:1000 at each lane. A goat anti-rabbit IgG H&L(HRP) at 1:10000 dilution was used as the secondary antibody. Lysates at 20ug per lane.

#### **PCGF1 Antibody (Center) - Background**

Component of the Polycomb group (PcG) multiprotein BCOR complex, a complex required to maintain the transcriptionally repressive state of some genes, such as BCL6 and the cyclin-dependent kinase inhibitor, CDKN1A. Transcriptional repressor that may be targeted to the DNA by BCL6; this transcription repressor activity may be related to PKC signaling pathway. Represses CDKN1A expression by binding to its promoter, and this repression is dependent on the retinoic acid response element (RARE element). Promotes cell cycle progression and enhances cell proliferation as well. May have a positive role in tumor cell growth by down-regulating CDKN1A. Component of a Polycomb group (PcG) multiprotein PRC1-like complex, a complex class required to maintain the transcriptionally repressive state of many genes, including Hox genes, throughout development. PcG PRC1 complex acts via chromatin remodeling and modification of histones; it mediates monoubiquitination of histone H2A 'Lys-119', rendering chromatin heritably changed in its expressibility.

#### **PCGF1 Antibody (Center) - References**

Ding J.B.,et al.Submitted (JUL-2003) to the EMBL/GenBank/DDBJ databases.  
Hillier L.W.,et al.Nature 434:724-731(2005).  
Nunes M.,et al.Mech. Dev. 102:219-222(2001).  
Gong Y.,et al.FEBS Lett. 579:115-121(2005).  
Gearhart M.D.,et al.Mol. Cell. Biol. 26:6880-6889(2006).