

**OLIG3 Antibody (Center)**  
**Purified Rabbit Polyclonal Antibody (Pab)**  
**Catalog # AP20964a**

**Specification**

---

**OLIG3 Antibody (Center) - Product Information**

Application	WB,E
Primary Accession	<a href="#">O7RTU3</a>
Other Accession	<a href="#">O6PFG8</a>
Reactivity	Human
Predicted	Mouse
Host	Rabbit
Clonality	Polyclonal
Isotype	Rabbit IgG
Calculated MW	29358

**OLIG3 Antibody (Center) - Additional Information**

**Gene ID** 167826

**Other Names**

Oligodendrocyte transcription factor 3, Oligo3, Class B basic helix-loop-helix protein 7, bHLHb7, Class E basic helix-loop-helix protein 20, bHLHe20, OLIG3, BHLHB7, BHLHE20

**Target/Specificity**

This OLIG3 antibody is generated from a rabbit immunized with a KLH conjugated synthetic peptide between 161-196 amino acids from the Central region of human OLIG3.

**Dilution**

WB~~1:2000  
E~~Use at an assay dependent concentration.

**Format**

Purified polyclonal antibody supplied in PBS with 0.09% (W/V) sodium azide. This antibody is purified through a protein A column, followed by peptide affinity purification.

**Storage**

Maintain refrigerated at 2-8°C for up to 2 weeks. For long term storage store at -20°C in small aliquots to prevent freeze-thaw cycles.

**Precautions**

OLIG3 Antibody (Center) is for research use only and not for use in diagnostic or therapeutic procedures.

**OLIG3 Antibody (Center) - Protein Information**

**Name** OLIG3

**Synonyms** BHLHB7, BHLHE20

**Function** May determine the distinct specification program of class A neurons in the dorsal part of the spinal cord and suppress specification of class B neurons.

**Cellular Location**

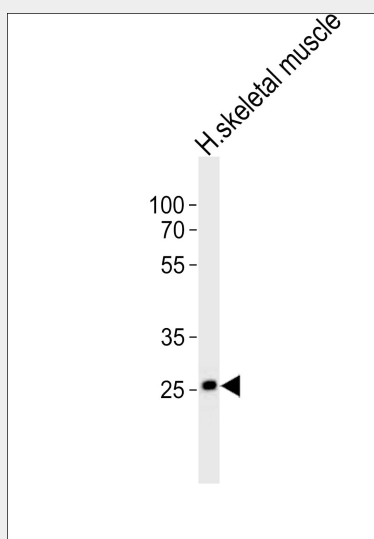
Nucleus {ECO:0000255|PROSITE-ProRule:PRU00981}.

**OLIG3 Antibody (Center) - Protocols**

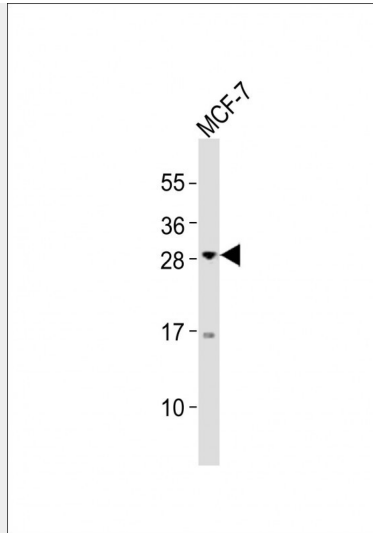
Provided below are standard protocols that you may find useful for product applications.

- [Western Blot](#)
- [Blocking Peptides](#)
- [Dot Blot](#)
- [Immunohistochemistry](#)
- [Immunofluorescence](#)
- [Immunoprecipitation](#)
- [Flow Cytometry](#)
- [Cell Culture](#)

**OLIG3 Antibody (Center) - Images**



Western blot analysis of lysate from human skeletal muscle tissue lysate, using OLIG3 Antibody (Center)(Cat. #AP20964a). AP20964a was diluted at 1:1000. A goat anti-rabbit IgG H&L(HRP) at 1:10000 dilution was used as the secondary antibody. Lysate at 20ug.



Anti-OLIG3 Antibody (Center) at 1:2000 dilution + MCF-7 whole cell lysates Lysates/proteins at 20  $\mu$ g per lane. Secondary Goat Anti-Rabbit IgG, (H+L), Peroxidase conjugated at 1/10000 dilution Predicted band size : 29 kDa Blocking/Dilution buffer: 5% NFDM/TBST.

#### **OLIG3 Antibody (Center) - Background**

May determine the distinct specification program of class A neurons in the dorsal part of the spinal cord and suppress specification of class B neurons.

#### **OLIG3 Antibody (Center) - References**

Ota T., et al. Nat. Genet. 36:40-45(2004).  
Mungall A.J., et al. Nature 425:805-811(2003).  
McLellan A.S., et al. Mech. Dev. 119:S285-S291(2002).