

**(Mouse) Msi1 Antibody (Center)**  
**Purified Rabbit Polyclonal Antibody (Pab)**  
**Catalog # AP20968a**

---

**Specification**

**(Mouse) Msi1 Antibody (Center) - Product Information**

Application	WB,E
Primary Accession	<a href="#">Q61474</a>
Other Accession	<a href="#">Q8K3P4</a> , <a href="#">Q43347</a>
Reactivity	Mouse
Predicted	Human, Rat
Host	Rabbit
Clonality	Polyclonal
Isotype	Rabbit IgG
Calculated MW	39119

**(Mouse) Msi1 Antibody (Center) - Additional Information**

**Gene ID** 17690

**Other Names**

RNA-binding protein Musashi homolog 1, Musashi-1, Msi1, Msi1h

**Target/Specificity**

This mouse Msi1 antibody is generated from a rabbit immunized with a KLH conjugated synthetic peptide between 81-113 amino acids from the Central region of mouse Msi1.

**Dilution**

WB~~1:1000

E~~Use at an assay dependent concentration.

**Format**

Purified polyclonal antibody supplied in PBS with 0.09% (W/V) sodium azide. This antibody is purified through a protein A column, followed by peptide affinity purification.

**Storage**

Maintain refrigerated at 2-8°C for up to 2 weeks. For long term storage store at -20°C in small aliquots to prevent freeze-thaw cycles.

**Precautions**

(Mouse) Msi1 Antibody (Center) is for research use only and not for use in diagnostic or therapeutic procedures.

**(Mouse) Msi1 Antibody (Center) - Protein Information**

**Name** Msi1

**Synonyms** Msi1h

**Function** RNA binding protein that regulates the expression of target mRNAs at the translation level. Regulates expression of the NOTCH1 antagonist NUMB. Binds RNA containing the sequence 5'-GUUAGUUAGUUAGUU- 3' and other sequences containing the pattern 5'-[GA]U(1-3)AGU-3'. May play a role in the proliferation and maintenance of stem cells in the central nervous system.

**Cellular Location**

Cytoplasm. Nucleus

**Tissue Location**

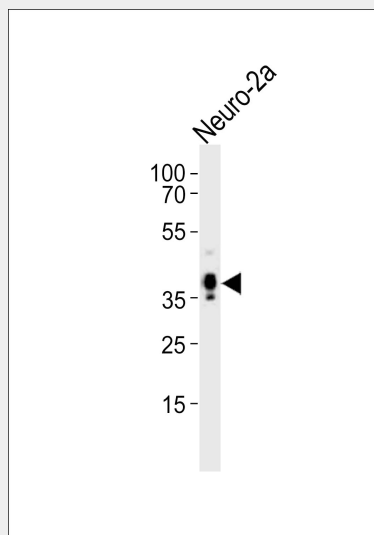
Expressed in neural stem and progenitor cells (at protein level) (PubMed:16554442). Detected in olfactory bulb, brain stem, small intestine, and at low levels in brain cortex, hippocampus and ovary (PubMed:8660864). Detected in neural progenitor cells, including neural stem cells (PubMed:8660864)

**(Mouse) Msi1 Antibody (Center) - Protocols**

Provided below are standard protocols that you may find useful for product applications.

- [Western Blot](#)
- [Blocking Peptides](#)
- [Dot Blot](#)
- [Immunohistochemistry](#)
- [Immunofluorescence](#)
- [Immunoprecipitation](#)
- [Flow Cytometry](#)
- [Cell Culture](#)

**(Mouse) Msi1 Antibody (Center) - Images**



Western blot analysis of lysate from Neuro-2a cell line, using (Mouse) Msi1 Antibody (Center)(Cat. #AP20968a). AP20968a was diluted at 1:1000. A goat anti-rabbit IgG H&L(HRP) at 1:10000 dilution was used as the secondary antibody. Lysate at 20ug.

**(Mouse) Msi1 Antibody (Center) - Background**

RNA binding protein that regulates the expression of target mRNAs at the translation level. Regulates expression of the NOTCH1 antagonist NUMB. Binds RNA containing the sequence 5'-

GUUAGUUAGUUAGUU-3' and other sequences containing the pattern 5'- [GA]U(1-3)AGU-3'. May play a role in the proliferation and maintenance of stem cells in the central nervous system.

**(Mouse) Msi1 Antibody (Center) - References**

Sakakibara S.,et al.Dev. Biol. 176:230-242(1996).  
Carninci P.,et al.Science 309:1559-1563(2005).  
Imai T.,et al.Mol. Cell. Biol. 21:3888-3900(2001).  
Sakakibara S.,et al.Proc. Natl. Acad. Sci. U.S.A. 99:15194-15199(2002).  
Nagata T.,et al.J. Mol. Biol. 287:315-330(1999).