

**GATA6 Antibody (C-term)**  
**Purified Rabbit Polyclonal Antibody (Pab)**  
**Catalog # AP20972c****Specification**

---

**GATA6 Antibody (C-term) - Product Information**

Application	WB,E
Primary Accession	<a href="#">O92908</a>
Reactivity	Human
Host	Rabbit
Clonality	Polyclonal
Isotype	Rabbit IgG
Calculated MW	60033

**GATA6 Antibody (C-term) - Additional Information****Gene ID** 2627**Other Names**

Transcription factor GATA-6, GATA-binding factor 6, GATA6

**Target/Specificity**

This GATA6 antibody is generated from a rabbit immunized with a KLH conjugated synthetic peptide between 551-585 amino acids from the C-terminal region of human GATA6.

**Dilution**

WB~~1:1000

E~~Use at an assay dependent concentration.

**Format**

Purified polyclonal antibody supplied in PBS with 0.09% (W/V) sodium azide. This antibody is purified through a protein A column, followed by peptide affinity purification.

**Storage**

Maintain refrigerated at 2-8°C for up to 2 weeks. For long term storage store at -20°C in small aliquots to prevent freeze-thaw cycles.

**Precautions**

GATA6 Antibody (C-term) is for research use only and not for use in diagnostic or therapeutic procedures.

**GATA6 Antibody (C-term) - Protein Information****Name** GATA6

**Function** Transcriptional activator (PubMed:[19666519](#), PubMed:[22750565](#), PubMed:[22824924](#), PubMed:[27756709](#)). Regulates SEMA3C and PLXNA2 (PubMed:[19666519](#)). Involved in gene regulation specifically in the gastric epithelium (PubMed:[9315713](#)). May regulate genes that

protect epithelial cells from bacterial infection (PubMed:[16968778](#)). Involved in bone morphogenetic protein (BMP)-mediated cardiac-specific gene expression (By similarity). Binds to BMP response element (BMPRE) DNA sequences within cardiac activating regions (By similarity). In human skin, controls several physiological processes contributing to homeostasis of the upper pilosebaceous unit. Triggers ductal and sebaceous differentiation as well as limits cell proliferation and lipid production to prevent hyperseborrhoea. Mediates the effects of retinoic acid on sebocyte proliferation, differentiation and lipid production. Also contributes to immune regulation of sebocytes and antimicrobial responses by modulating the expression of anti-inflammatory genes such as IL10 and pro-inflammatory genes such as IL6, TLR2, TLR4, and IFNG. Activates TGFB1 signaling which controls the interfollicular epidermis fate (PubMed:[33082341](#)).

#### Cellular Location

Nucleus

#### Tissue Location

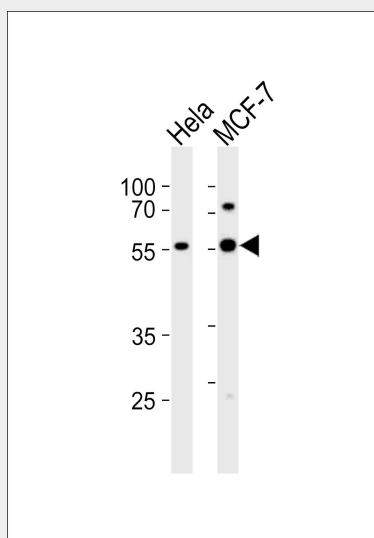
Expressed in heart, gut and gut-derived tissues. Expressed in skin upper pilosebaceous unit. Expression is decreased or lost in acne lesions (PubMed:33082341).

### GATA6 Antibody (C-term) - Protocols

Provided below are standard protocols that you may find useful for product applications.

- [Western Blot](#)
- [Blocking Peptides](#)
- [Dot Blot](#)
- [Immunohistochemistry](#)
- [Immunofluorescence](#)
- [Immunoprecipitation](#)
- [Flow Cytometry](#)
- [Cell Culture](#)

### GATA6 Antibody (C-term) - Images



Western blot analysis of lysates from HeLa, MCF-7 cell line (from left to right), using GATA6 Antibody (C-term)(Cat. #AP20972c). AP20972c was diluted at 1:1000 at each lane. A goat anti-rabbit IgG H&L(HRP) at 1:10000 dilution was used as the secondary antibody. Lysates at 20ug per lane.

**GATA6 Antibody (C-term) - Background**

Transcriptional activator that regulates SEMA3C and PLXNA2. Thought to be important for regulating terminal differentiation and/or proliferation.

**GATA6 Antibody (C-term) - References**

Suzuki E.,et al.Genomics 38:283-290(1996).  
Huggon I.C.,et al.Biochim. Biophys. Acta 1353:98-102(1997).  
Yoshida T.,et al.FEBS Lett. 414:333-337(1997).  
Nusbaum C.,et al.Nature 437:551-555(2005).  
Mural R.J.,et al.Submitted (JUL-2005) to the EMBL/GenBank/DDBJ databases.