

IHH Antibody (C-term)
Purified Rabbit Polyclonal Antibody (Pab)
Catalog # AP20973c

Specification

IHH Antibody (C-term) - Product Information

Application	WB,E
Primary Accession	Q14623 , P97812
Reactivity	Human, Mouse
Host	Rabbit
Clonality	Polyclonal
Isotype	Rabbit IgG

IHH Antibody (C-term) - Additional Information

Other Names

Indian hedgehog protein, IHH, HHG-2, Indian hedgehog protein N-product, Indian hedgehog protein C-product, IHH

Target/Specificity

This IHH antibody is generated from a rabbit immunized with a KLH conjugated synthetic peptide between 397-431 amino acids from the C-terminal region of human IHH.

Dilution

WB~~1:1000

E~~Use at an assay dependent concentration.

Format

Purified polyclonal antibody supplied in PBS with 0.09% (W/V) sodium azide. This antibody is purified through a protein A column, followed by peptide affinity purification.

Storage

Maintain refrigerated at 2-8°C for up to 2 weeks. For long term storage store at -20°C in small aliquots to prevent freeze-thaw cycles.

Precautions

IHH Antibody (C-term) is for research use only and not for use in diagnostic or therapeutic procedures.

IHH Antibody (C-term) - Protein Information

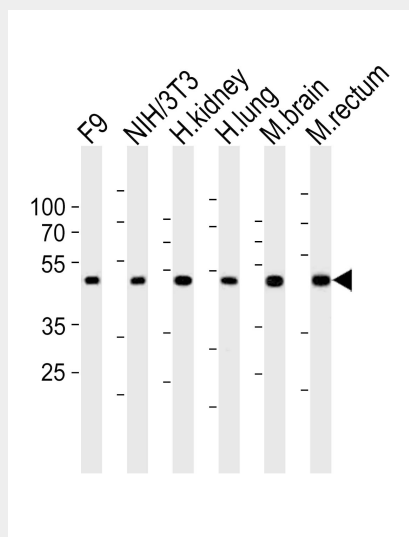
IHH Antibody (C-term) - Protocols

Provided below are standard protocols that you may find useful for product applications.

- [Western Blot](#)

- [Blocking Peptides](#)
- [Dot Blot](#)
- [Immunohistochemistry](#)
- [Immunofluorescence](#)
- [Immunoprecipitation](#)
- [Flow Cytometry](#)
- [Cell Culture](#)

IHH Antibody (C-term) - Images



Western blot analysis of lysates from mouse F9, mouse NIH/3T3 cell line, human kidney, human lung, mouse brain, mouse rectum tissue (from left to right), using IHH Antibody (C-term) (Cat. #AP20973c). AP20973c was diluted at 1:1000 at each lane. A goat anti-rabbit IgG H&L (HRP) at 1:10000 dilution was used as the secondary antibody. Lysates at 20ug per lane.

IHH Antibody (C-term) - Background

Intercellular signal essential for a variety of patterning events during development. Binds to the patched (PTC) receptor, which functions in association with smoothened (SMO), to activate the transcription of target genes. Implicated in endochondral ossification: may regulate the balance between growth and ossification of the developing bones. Induces the expression of parathyroid hormone-related protein (PTHrP) (By similarity).

IHH Antibody (C-term) - References

- Tate G., et al. J. Biochem. Mol. Biol. Biophys. 4:27-34(2000).
Mural R.J., et al. Submitted (JUL-2005) to the EMBL/GenBank/DDBJ databases.
Marigo V., et al. Genomics 28:44-51(1995).
Chang D.T., et al. Development 120:3339-3353(1994).
Pepinsky R.B., et al. J. Biol. Chem. 273:14037-14045(1998).