

**PAX6 Antibody (Center)**  
**Purified Rabbit Polyclonal Antibody (Pab)**  
**Catalog # AP20979a**

**Specification**

---

**PAX6 Antibody (Center) - Product Information**

Application	WB,E
Primary Accession	<a href="#">P26367</a>
Other Accession	<a href="#">P63015</a> , <a href="#">P26630</a> , <a href="#">Q1LZF1</a>
Reactivity	Human
Predicted	Bovine, Zebrafish, Mouse
Host	Rabbit
Clonality	Polyclonal
Isotype	Rabbit IgG
Calculated MW	46683

**PAX6 Antibody (Center) - Additional Information**

**Gene ID** 5080

**Other Names**

Paired box protein Pax-6, Aniridia type II protein, Oculorhombin, PAX6, AN2

**Target/Specificity**

This PAX6 antibody is generated from a rabbit immunized with a KLH conjugated synthetic peptide between 183-214 amino acids from the Central region of human PAX6.

**Dilution**

WB~~1:1000

E~~Use at an assay dependent concentration.

**Format**

Purified polyclonal antibody supplied in PBS with 0.09% (W/V) sodium azide. This antibody is purified through a protein A column, followed by peptide affinity purification.

**Storage**

Maintain refrigerated at 2-8°C for up to 2 weeks. For long term storage store at -20°C in small aliquots to prevent freeze-thaw cycles.

**Precautions**

PAX6 Antibody (Center) is for research use only and not for use in diagnostic or therapeutic procedures.

**PAX6 Antibody (Center) - Protein Information**

**Name** PAX6

**Synonyms** AN2

**Function** Transcription factor with important functions in the development of the eye, nose, central nervous system and pancreas. Required for the differentiation of pancreatic islet alpha cells (By similarity). Competes with PAX4 in binding to a common element in the glucagon, insulin and somatostatin promoters. Regulates specification of the ventral neuron subtypes by establishing the correct progenitor domains (By similarity). Acts as a transcriptional repressor of NFATC1- mediated gene expression (By similarity).

**Cellular Location**

Nucleus {ECO:0000250|UniProtKB:P63015}. [Isoform 5a]: Nucleus {ECO:0000250|UniProtKB:P63016}

**Tissue Location**

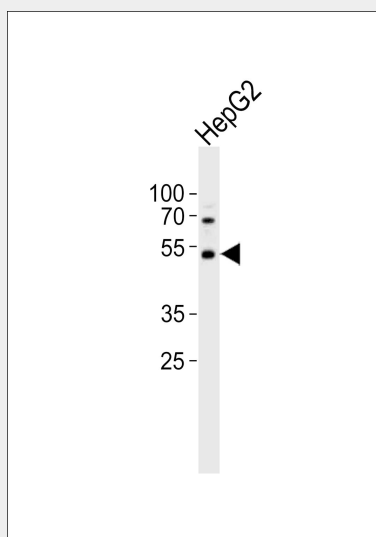
[Isoform 1]: Expressed in lymphoblasts.

**PAX6 Antibody (Center) - Protocols**

Provided below are standard protocols that you may find useful for product applications.

- [Western Blot](#)
- [Blocking Peptides](#)
- [Dot Blot](#)
- [Immunohistochemistry](#)
- [Immunofluorescence](#)
- [Immunoprecipitation](#)
- [Flow Cytometry](#)
- [Cell Culture](#)

**PAX6 Antibody (Center) - Images**



Western blot analysis of lysate from HepG2 cell line, using PAX6 Antibody (Center)(Cat. #AP20979a). AP20979a was diluted at 1:1000. A goat anti-rabbit IgG H&L(HRP) at 1:10000 dilution was used as the secondary antibody. Lysate at 20ug.

**PAX6 Antibody (Center) - Background**

Transcription factor with important functions in the development of the eye, nose, central nervous system and pancreas. Required for the differentiation of pancreatic islet alpha cells (By similarity).

Competes with PAX4 in binding to a common element in the glucagon, insulin and somatostatin promoters. Regulates specification of the ventral neuron subtypes by establishing the correct progenitor domains (By similarity). Isoform 5a appears to function as a molecular switch that specifies target genes.

#### **PAX6 Antibody (Center) - References**

Ton C.C.T.,et al.Cell 67:1059-1074(1991).  
Glaser T.,et al.Nat. Genet. 2:232-239(1992).  
Liu J.,et al.Submitted (JUL-2001) to the EMBL/GenBank/DDBJ databases.  
Bechtel S.,et al.BMC Genomics 8:399-399(2007).  
Taylor T.D.,et al.Nature 440:497-500(2006).