

EWSR1 Antibody (Center)
Purified Rabbit Polyclonal Antibody (Pab)
Catalog # AP20981a**Specification**

EWSR1 Antibody (Center) - Product Information

Application	WB,E
Primary Accession	Q01844
Other Accession	Q61545
Reactivity	Mouse
Host	Rabbit
Clonality	Polyclonal
Isotype	Rabbit IgG
Calculated MW	68478

EWSR1 Antibody (Center) - Additional Information**Gene ID** 2130**Other Names**

RNA-binding protein EWS, EWS oncogene, Ewing sarcoma breakpoint region 1 protein, EWSR1, EWS

Target/Specificity

This EWSR1 antibody is generated from a rabbit immunized with a KLH conjugated synthetic peptide between 328-362 amino acids from the Central region of human EWSR1.

Dilution

WB~~1:1000

E~~Use at an assay dependent concentration.

Format

Purified polyclonal antibody supplied in PBS with 0.09% (W/V) sodium azide. This antibody is purified through a protein A column, followed by peptide affinity purification.

Storage

Maintain refrigerated at 2-8°C for up to 2 weeks. For long term storage store at -20°C in small aliquots to prevent freeze-thaw cycles.

Precautions

EWSR1 Antibody (Center) is for research use only and not for use in diagnostic or therapeutic procedures.

EWSR1 Antibody (Center) - Protein Information**Name** EWSR1**Synonyms** EWS

Function Binds to ssRNA containing the consensus sequence 5'-AGGUAA-3' (PubMed:[21256132](#)). Might normally function as a transcriptional repressor (PubMed:[10767297](#)). EWS-fusion-proteins (EFPS) may play a role in the tumorigenic process. They may disturb gene expression by mimicking, or interfering with the normal function of CTD-POLII within the transcription initiation complex. They may also contribute to an aberrant activation of the fusion protein target genes.

Cellular Location

Nucleus. Cytoplasm. Cell membrane. Note=Relocates from cytoplasm to ribosomes upon PTK2B/FAK2 activation

Tissue Location

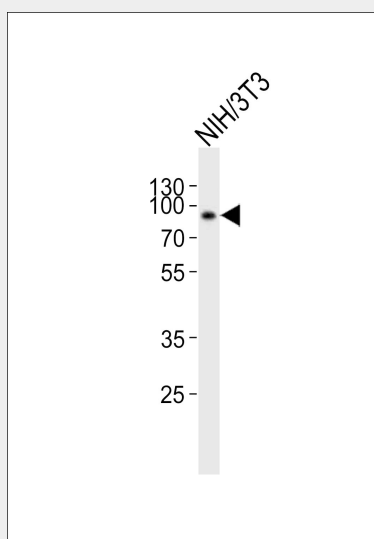
Ubiquitous.

EWSR1 Antibody (Center) - Protocols

Provided below are standard protocols that you may find useful for product applications.

- [Western Blot](#)
- [Blocking Peptides](#)
- [Dot Blot](#)
- [Immunohistochemistry](#)
- [Immunofluorescence](#)
- [Immunoprecipitation](#)
- [Flow Cytometry](#)
- [Cell Culture](#)

EWSR1 Antibody (Center) - Images



Western blot analysis of lysate from mouse NIH/3T3 cell line, using EWSR1 Antibody (Center)(Cat. #AP20981a). AP20981a was diluted at 1:1000. A goat anti-rabbit IgG H&L(HRP) at 1:10000 dilution was used as the secondary antibody. Lysate at 20ug.

EWSR1 Antibody (Center) - Background

Might normally function as a transcriptional repressor. EWS-fusion-proteins (EFPS) may play a role in the tumorigenic process. They may disturb gene expression by mimicking, or interfering with the normal function of CTD-POLII within the transcription initiation complex. They may also

contribute to an aberrant activation of the fusion protein target genes.

EWSR1 Antibody (Center) - References

Delattre O.,et al.Nature 359:162-165(1992).

Plougastel B.,et al.Genomics 18:609-615(1993).

Zucman-Rossi J.,et al.Submitted (MAY-1998) to the EMBL/GenBank/DDBJ databases.

Collins J.E.,et al.Genome Biol. 5:R84.1-R84.11(2004).

Ota T.,et al.Nat. Genet. 36:40-45(2004).