

STAT5A Antibody (C-term)
Purified Rabbit Polyclonal Antibody (Pab)
Catalog # AP20982c**Specification**

STAT5A Antibody (C-term) - Product Information

| | |
|-------------------|------------------------|
| Application | WB, IF, E |
| Primary Accession | P42229 |
| Reactivity | Human |
| Host | Rabbit |
| Clonality | Polyclonal |
| Isotype | Rabbit IgG |
| Calculated MW | 90647 |

STAT5A Antibody (C-term) - Additional Information**Gene ID** 6776**Other Names**

Signal transducer and activator of transcription 5A, STAT5A, STAT5

Target/Specificity

This STAT5A antibody is generated from a rabbit immunized with a KLH conjugated synthetic peptide between 730-765 amino acids from the C-terminal region of human STAT5A.

Dilution

WB~~1:1000

IF~~1:25

E~~Use at an assay dependent concentration.

Format

Purified polyclonal antibody supplied in PBS with 0.09% (W/V) sodium azide. This antibody is purified through a protein A column, followed by peptide affinity purification.

Storage

Maintain refrigerated at 2-8°C for up to 2 weeks. For long term storage store at -20°C in small aliquots to prevent freeze-thaw cycles.

Precautions

STAT5A Antibody (C-term) is for research use only and not for use in diagnostic or therapeutic procedures.

STAT5A Antibody (C-term) - Protein Information**Name** STAT5A**Synonyms** STAT5

Function Carries out a dual function: signal transduction and activation of transcription. Mediates cellular responses to the cytokine KITLG/SCF and other growth factors. Mediates cellular responses to ERBB4. May mediate cellular responses to activated FGFR1, FGFR2, FGFR3 and FGFR4. Binds to the GAS element and activates PRL- induced transcription. Regulates the expression of milk proteins during lactation.

Cellular Location

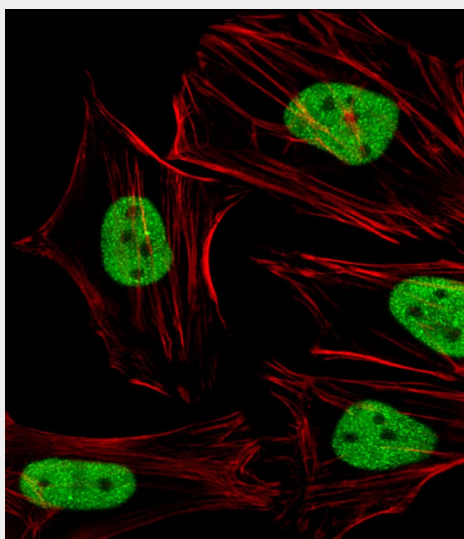
Cytoplasm. Nucleus. Note=Translocated into the nucleus in response to phosphorylation

STAT5A Antibody (C-term) - Protocols

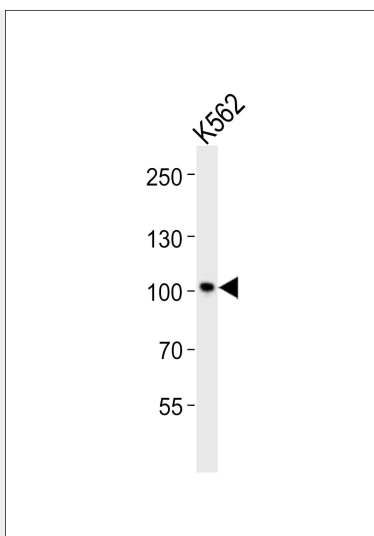
Provided below are standard protocols that you may find useful for product applications.

- [Western Blot](#)
- [Blocking Peptides](#)
- [Dot Blot](#)
- [Immunohistochemistry](#)
- [Immunofluorescence](#)
- [Immunoprecipitation](#)
- [Flow Cytometry](#)
- [Cell Culture](#)

STAT5A Antibody (C-term) - Images



Immunofluorescent analysis of 4% paraformaldehyde-fixed, 0.1% Triton X-100 permeabilized HeLa (Human Cervical epithelial adenocarcinoma cell line) cells labeling STAT5A with AP20982c at 1/25 dilution, followed by Alexa Fluor 488-conjugated goat anti-rabbit IgG (1583138) secondary antibody at 1/400 dilution (green). Confocal image showing nuclear staining on HeLa cell line. Cytoplasmic actin is detected with Alexa Fluor® 555 conjugated with Phalloidin (OB16636430) at 1/100 dilution (red).



Western blot analysis of lysate from K562 cell line, using STAT5A Antibody (C-term)(Cat. #AP20982c). AP20982c was diluted at 1:1000. A goat anti-rabbit IgG H&L(HRP) at 1:10000 dilution was used as the secondary antibody. Lysate at 20ug.

STAT5A Antibody (C-term) - Background

Carries out a dual function: signal transduction and activation of transcription. Mediates cellular responses to the cytokine KITLG/SCF and other growth factors. Mediates cellular responses to ERBB4. May mediate cellular responses to activated FGFR1, FGFR2, FGFR3 and FGFR4. Binds to the GAS element and activates PRL-induced transcription. Regulates the expression of milk proteins during lactation.

STAT5A Antibody (C-term) - References

Hou J.,et al.Immunity 2:321-329(1995).
Lin J.X.,et al.Submitted (DEC-1995) to the EMBL/GenBank/DDBJ databases.
Tan D.,et al.Submitted (APR-2006) to the EMBL/GenBank/DDBJ databases.
Ota T.,et al.Nat. Genet. 36:40-45(2004).
Zody M.C.,et al.Nature 440:1045-1049(2006).