

Isl1 Antibody (C-term)
Purified Rabbit Polyclonal Antibody (Pab)
Catalog # AP20999c**Specification**

Isl1 Antibody (C-term) - Product Information

Application	WB,E
Primary Accession	P61374
Other Accession	P50211 , P53405 , P61371 , P61372 , P61374
Reactivity	Rat
Predicted	Chicken, Zebrafish, Human, Mouse
Host	Rabbit
Clonality	Polyclonal
Isotype	Rabbit IgG
Antigen Region	302-336

Isl1 Antibody (C-term) - Additional Information**Other Names**

Insulin gene enhancer protein ISL-1, Islet-1, Isl1

Target/Specificity

This Mouse Isl1 antibody is generated from a rabbit immunized with a KLH conjugated synthetic peptide between 302-336 amino acids from the C-terminal region of mouse Isl1.

Dilution

WB~~1:1000

E~~Use at an assay dependent concentration.

Format

Purified polyclonal antibody supplied in PBS with 0.09% (W/V) sodium azide. This antibody is purified through a protein A column, followed by peptide affinity purification.

Storage

Maintain refrigerated at 2-8°C for up to 2 weeks. For long term storage store at -20°C in small aliquots to prevent freeze-thaw cycles.

Precautions

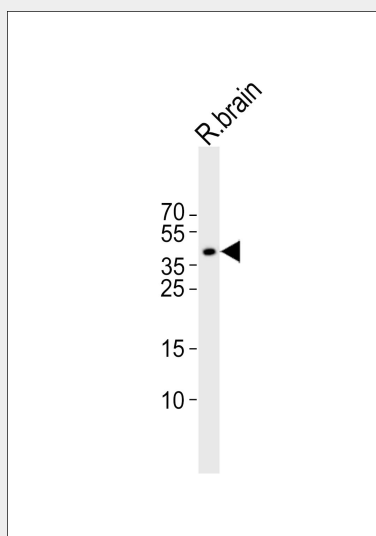
Isl1 Antibody (C-term) is for research use only and not for use in diagnostic or therapeutic procedures.

Isl1 Antibody (C-term) - Protein Information**Isl1 Antibody (C-term) - Protocols**

Provided below are standard protocols that you may find useful for product applications.

- [Western Blot](#)
- [Blocking Peptides](#)
- [Dot Blot](#)
- [Immunohistochemistry](#)
- [Immunofluorescence](#)
- [Immunoprecipitation](#)
- [Flow Cytometry](#)
- [Cell Culture](#)

Isl1 Antibody (C-term) - Images



Western blot analysis of lysate from rat brain tissue lysate, using Isl1 Antibody (C-term)(Cat. #AP20999c). AP20999c was diluted at 1:1000. A goat anti-rabbit IgG H&L(HRP) at 1:10000 dilution was used as the secondary antibody. Lysate at 20ug.

Isl1 Antibody (C-term) - Background

Binds and regulates the promoters of the insulin, glucagon and somatostatin genes. Involved in the specification of motor neurons in cooperation with LHX3 and LDB1.

Isl1 Antibody (C-term) - References

Ando K.,et al.J. Mol. Endocrinol. 31:419-425(2003).
Koehler K.,et al.Submitted (MAR-1999) to the EMBL/GenBank/DDBJ databases.
Bhati M.,et al.EMBO J. 27:2018-2029(2008).