

HES1 Antibody (C-term)
Purified Rabbit Polyclonal Antibody (Pab)
Catalog # AP21002c

Specification

HES1 Antibody (C-term) - Product Information

Application	WB,E
Primary Accession	O14469
Other Accession	O3ZBG4
Reactivity	Human
Predicted	Bovine
Host	Rabbit
Clonality	Polyclonal
Isotype	Rabbit IgG
Calculated MW	29541

HES1 Antibody (C-term) - Additional Information

Gene ID 3280

Other Names

Transcription factor HES-1, Class B basic helix-loop-helix protein 39, bHLHb39, Hairy and enhancer of split 1, Hairy homolog, Hairy-like protein, hHL, HES1, BHLHB39, HL, HRY

Target/Specificity

This HES1 antibody is generated from a rabbit immunized with a KLH conjugated synthetic peptide between 259-293 amino acids from the C-terminal region of human HES1.

Dilution

WB~~1:1000

E~~Use at an assay dependent concentration.

Format

Purified polyclonal antibody supplied in PBS with 0.09% (W/V) sodium azide. This antibody is purified through a protein A column, followed by peptide affinity purification.

Storage

Maintain refrigerated at 2-8°C for up to 2 weeks. For long term storage store at -20°C in small aliquots to prevent freeze-thaw cycles.

Precautions

HES1 Antibody (C-term) is for research use only and not for use in diagnostic or therapeutic procedures.

HES1 Antibody (C-term) - Protein Information

Name HES1

Synonyms BHLHB39, HL, HRY

Function Transcriptional repressor of genes that require a bHLH protein for their transcription. May act as a negative regulator of myogenesis by inhibiting the functions of MYOD1 and ASH1. Binds DNA on N-box motifs: 5'-CACNAG-3' with high affinity and on E-box motifs: 5'-CANNTG-3' with low affinity (By similarity). May play a role in a functional FA core complex response to DNA cross-link damage, being required for the stability and nuclear localization of FA core complex proteins, as well as for FANCD2 monoubiquitination in response to DNA damage.

Cellular Location

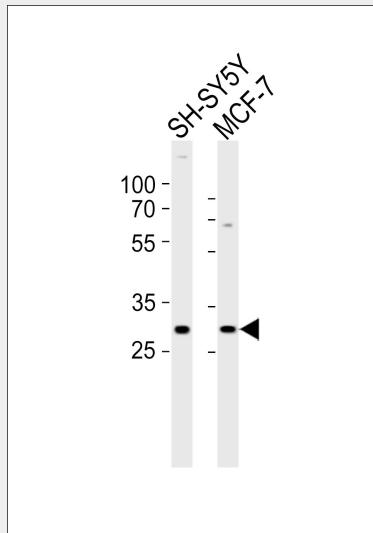
Nucleus.

HES1 Antibody (C-term) - Protocols

Provided below are standard protocols that you may find useful for product applications.

- [Western Blot](#)
- [Blocking Peptides](#)
- [Dot Blot](#)
- [Immunohistochemistry](#)
- [Immunofluorescence](#)
- [Immunoprecipitation](#)
- [Flow Cytometry](#)
- [Cell Culture](#)

HES1 Antibody (C-term) - Images



Western blot analysis of lysates from SH-SY5Y, MCF-7 cell line (from left to right), using HES1 Antibody (C-term)(Cat. #AP21002c). AP21002c was diluted at 1:1000 at each lane. A goat anti-rabbit IgG H&L(HRP) at 1:10000 dilution was used as the secondary antibody. Lysates at 20ug per lane.

HES1 Antibody (C-term) - Background

Transcriptional repressor of genes that require a bHLH protein for their transcription. May act as a negative regulator of myogenesis by inhibiting the functions of MYOD1 and ASH1. Binds DNA on N-box motifs: 5'-CACNAG-3' with high affinity and on E-box motifs: 5'-CANNTG-3' with low affinity

(By similarity). May play a role in a functional FA core complex response to DNA cross-link damage, being required for the stability and nuclear localization of FA core complex proteins, as well as for FANCD2 monoubiquitination in response to DNA damage.

HES1 Antibody (C-term) - References

Feder J.N., et al. Genomics 20:56-61(1994).

Yao J., et al. Submitted (MAY-2000) to the EMBL/GenBank/DDBJ databases.

Ota T., et al. Nat. Genet. 36:40-45(2004).

Ebert L., et al. Submitted (JUN-2004) to the EMBL/GenBank/DDBJ databases.

Takata T., et al. Biochem. Biophys. Res. Commun. 301:250-257(2003).