

**MSI1 Antibody (Center)**  
**Purified Rabbit Polyclonal Antibody (Pab)**  
**Catalog # AP21004a****Specification**

---

**MSI1 Antibody (Center) - Product Information**

|                   |   |
|-------------------|---|
| Application       | WB,E  |
| Primary Accession | <a href="#">O43347</a>  |
| Other Accession   | <a href="#">O92006</a> , <a href="#">O96DH6</a> , <a href="#">O8K3P4</a> , <a href="#">O61474</a> |
| Reactivity        | Human   |
| Predicted         | Mouse, Rat  |
| Host              | Rabbit  |
| Clonality         | Polyclonal  |
| Isotype           | Rabbit IgG  |
| Calculated MW     | 39125   |

**MSI1 Antibody (Center) - Additional Information****Gene ID** 4440**Other Names**

RNA-binding protein Musashi homolog 1, Musashi-1, MSI1

**Target/Specificity**

This MSI1 antibody is generated from a rabbit immunized with a KLH conjugated synthetic peptide between 144-176 amino acids from the Central region of human MSI1.

**Dilution**

WB~~1:1000

E~~Use at an assay dependent concentration.

**Format**

Purified polyclonal antibody supplied in PBS with 0.09% (W/V) sodium azide. This antibody is purified through a protein A column, followed by peptide affinity purification.

**Storage**

Maintain refrigerated at 2-8°C for up to 2 weeks. For long term storage store at -20°C in small aliquots to prevent freeze-thaw cycles.

**Precautions**

MSI1 Antibody (Center) is for research use only and not for use in diagnostic or therapeutic procedures.

**MSI1 Antibody (Center) - Protein Information****Name** MSI1**Function** RNA binding protein that regulates the expression of target mRNAs at the translation

level. Regulates expression of the NOTCH1 antagonist NUMB. Binds RNA containing the sequence 5'-GUUAGUUAGUUAGUU- 3' and other sequences containing the pattern 5'-[GA]U(1-3)AGU-3'. May play a role in the proliferation and maintenance of stem cells in the central nervous system (By similarity).

#### Cellular Location

Cytoplasm {ECO:0000250|UniProtKB:Q61474}. Nucleus {ECO:0000250|UniProtKB:Q61474}

#### Tissue Location

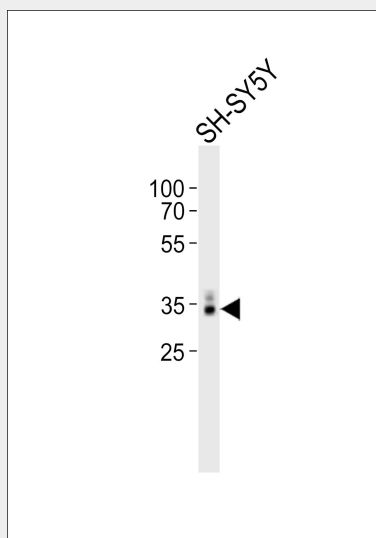
Detected in fetal kidney, brain, liver and lung, and in adult brain and pancreas. Detected in hepatoma cell lines

### MSI1 Antibody (Center) - Protocols

Provided below are standard protocols that you may find useful for product applications.

- [Western Blot](#)
- [Blocking Peptides](#)
- [Dot Blot](#)
- [Immunohistochemistry](#)
- [Immunofluorescence](#)
- [Immunoprecipitation](#)
- [Flow Cytometry](#)
- [Cell Culture](#)

### MSI1 Antibody (Center) - Images



Western blot analysis of lysate from SH-SY5Y cell line, using MSI1 Antibody (Center)(Cat. #AP21004a). AP21004a was diluted at 1:1000. A goat anti-rabbit IgG H&L(HRP) at 1:10000 dilution was used as the secondary antibody. Lysate at 20ug.

### MSI1 Antibody (Center) - Background

RNA binding protein that regulates the expression of target mRNAs at the translation level. Regulates expression of the NOTCH1 antagonist NUMB. Binds RNA containing the sequence 5'-GUUAGUUAGUUAGUU-3' and other sequences containing the pattern 5'-[GA]U(1-3)AGU-3'. May play a role in the proliferation and maintenance of stem cells in the central nervous system (By

similarity).

#### **MSI1 Antibody (Center) - References**

Good P.,et al.Genomics 52:382-384(1998).  
Scherer S.E.,et al.Nature 440:346-351(2006).  
Shu H.-J.,et al.Biochem. Biophys. Res. Commun. 293:150-154(2002).  
Okano H.,et al.J. Cell Sci. 115:1355-1359(2002).  
Gauci S.,et al.Anal. Chem. 81:4493-4501(2009).