

SKOR2 Antibody (C-term)
Purified Rabbit Polyclonal Antibody (Pab)
Catalog # AP21005c

Specification

SKOR2 Antibody (C-term) - Product Information

Application	WB, IF, E
Primary Accession	Q2VWA4
Reactivity	Human, Mouse
Host	Rabbit
Clonality	Polyclonal
Isotype	Rabbit IgG

SKOR2 Antibody (C-term) - Additional Information

Gene ID 652991

Other Names

SKI family transcriptional corepressor 2, Functional Smad-suppressing element on chromosome 18, Fussel-18, LBX1 corepressor 1-like protein, Ladybird homeobox corepressor 1-like protein, SKOR2, CORL2, FUSSEL18

Target/Specificity

This SKOR2 antibody is generated from a rabbit immunized with a KLH conjugated synthetic peptide between 741-775 amino acids from the C-terminal region of human SKOR2.

Dilution

WB~~1:1000

IF~~1:2000

E~~Use at an assay dependent concentration.

Format

Purified polyclonal antibody supplied in PBS with 0.09% (W/V) sodium azide. This antibody is purified through a protein A column, followed by peptide affinity purification.

Storage

Maintain refrigerated at 2-8°C for up to 2 weeks. For long term storage store at -20°C in small aliquots to prevent freeze-thaw cycles.

Precautions

SKOR2 Antibody (C-term) is for research use only and not for use in diagnostic or therapeutic procedures.

SKOR2 Antibody (C-term) - Protein Information

Name SKOR2 ([HGNC:32695](#))

Synonyms CORL2, FUSSEL18

Function Exhibits transcriptional repressor activity (By similarity). Acts as a TGF-beta antagonist in the nervous system.

Cellular Location

Nucleus. Cytoplasm

Tissue Location

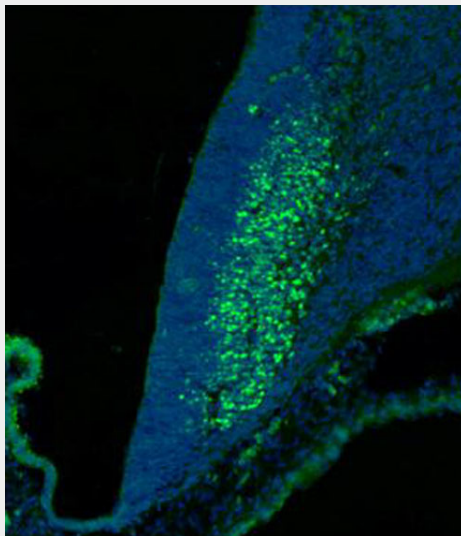
Expressed in cerebellum, spinal cord and testis. Isoform 2 is present in cerebellum (at protein level)

SKOR2 Antibody (C-term) - Protocols

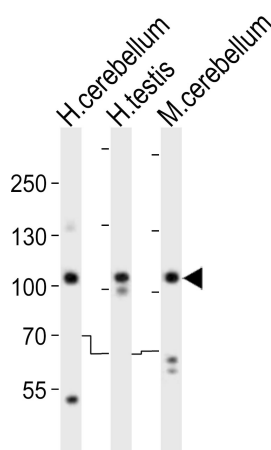
Provided below are standard protocols that you may find useful for product applications.

- [Western Blot](#)
- [Blocking Peptides](#)
- [Dot Blot](#)
- [Immunohistochemistry](#)
- [Immunofluorescence](#)
- [Immunoprecipitation](#)
- [Flow Cytometry](#)
- [Cell Culture](#)

SKOR2 Antibody (C-term) - Images



AP21005c staining SKOR2 in mouse cerebellum at embryonic stage 12.5 sections by Immunohistochemistry (IHC-P - 4%paraformaldehyde-fixed, cryopreserved in 30% sucrose/1X PBS for 30 hours, and then cut at a cryotome). Tissue was fixed with formaldehyde and blocked with 3% BSA for 0.5 hour at room temperature. Samples were incubated with primary antibody (1/2000) for 1 hours at 37°C. Immunofluorescence image showing purkinje cell neurons staining on mouse cerebellum tissue. The nuclear counter stain is DAPI (blue).



Western blot analysis of lysates from human cerebellum, human testis, mouse cerebellum tissue lysate (from left to right), using SKOR2 Antibody (C-term)(Cat. #AP21005c). AP21005c was diluted at 1:1000 at each lane. A goat anti-rabbit IgG H&L(HRP) at 1:10000 dilution was used as the secondary antibody. Lysates at 20ug per lane.

SKOR2 Antibody (C-term) - Background

Exhibits transcriptional repressor activity (By similarity). Acts as a TGF-beta antagonist in the nervous system.

SKOR2 Antibody (C-term) - References

Arndt S.,et al.Lab. Invest. 85:1330-1341(2005).
Nusbaum C.,et al.Nature 437:551-555(2005).