

**MIXL1 Antibody (C-term)**  
**Purified Rabbit Polyclonal Antibody (Pab)**  
**Catalog # AP21011c**

**Specification**

---

**MIXL1 Antibody (C-term) - Product Information**

Application	WB,E
Primary Accession	<a href="#">Q9H2W2</a>
Reactivity	Human, Mouse
Host	Rabbit
Clonality	Polyclonal
Isotype	Rabbit IgG

**MIXL1 Antibody (C-term) - Additional Information**

**Gene ID** 83881

**Other Names**

Homeobox protein MIXL1, Homeodomain protein MIX, hMix, MIX1 homeobox-like protein 1, Mix1 homeobox-like protein, MIXL1, MIXL

**Target/Specificity**

This MIXL1 antibody is generated from a rabbit immunized with a KLH conjugated synthetic peptide between 183-218 amino acids from the C-terminal region of human MIXL1.

**Dilution**

WB~~1:500-1:1000

E~~Use at an assay dependent concentration.

**Format**

Purified polyclonal antibody supplied in PBS with 0.09% (W/V) sodium azide. This antibody is purified through a protein A column, followed by peptide affinity purification.

**Storage**

Maintain refrigerated at 2-8°C for up to 2 weeks. For long term storage store at -20°C in small aliquots to prevent freeze-thaw cycles.

**Precautions**

MIXL1 Antibody (C-term) is for research use only and not for use in diagnostic or therapeutic procedures.

**MIXL1 Antibody (C-term) - Protein Information**

**Name** MIXL1

**Synonyms** MIXL

**Function** Transcription factor that play a central role in proper axial mesendoderm

morphogenesis and endoderm formation. Required for efficient differentiation of cells from the primitive streak stage to blood, by acting early in the recruitment and/or expansion of mesodermal progenitors to the hemangioblastic and hematopoietic lineages. Also involved in the morphogenesis of the heart and the gut during embryogenesis. Acts as a negative regulator of brachyury expression (By similarity).

#### Cellular Location

Nucleus {ECO:0000255|PROSITE-ProRule:PRU00108, ECO:0000269|PubMed:12070013, ECO:0000269|PubMed:17303500}

#### Tissue Location

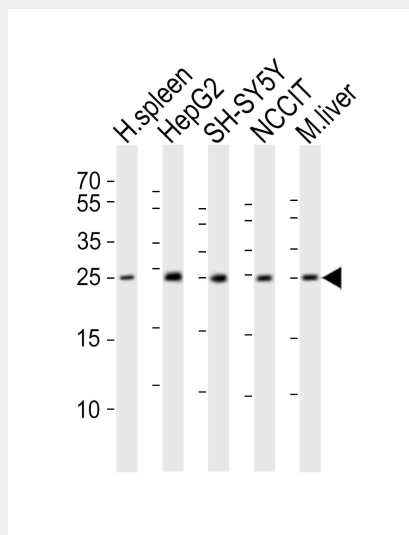
Restricted to progenitors and secondary lymph tissues. In normal hematopoiesis, it is restricted to immature B- and T-lymphoid cells. Present in differentiating embryonic stem cells (at protein level).

### MIXL1 Antibody (C-term) - Protocols

Provided below are standard protocols that you may find useful for product applications.

- [Western Blot](#)
- [Blocking Peptides](#)
- [Dot Blot](#)
- [Immunohistochemistry](#)
- [Immunofluorescence](#)
- [Immunoprecipitation](#)
- [Flow Cytometry](#)
- [Cell Culture](#)

### MIXL1 Antibody (C-term) - Images



Western blot analysis of lysates from human spleen tissue lysate, HepG2, SH-SY5Y, NCCIT cell line, mouse liver tissue lysate (from left to right), using MIXL1 Antibody (C-term)(Cat. #AP21011c). AP21011c was diluted at 1:1000 at each lane. A goat anti-rabbit IgG H&L(HRP) at 1:10000 dilution was used as the secondary antibody. Lysates at 20ug per lane.

### MIXL1 Antibody (C-term) - Background

Transcription factor that play a central role in proper axial mesendoderm morphogenesis and endoderm formation. Required for efficient differentiation of cells from the primitive streak stage to blood, by acting early in the recruitment and/or expansion of mesodermal progenitors to the hemangioblastic and hematopoietic lineages. Also involved in the morphogenesis of the heart and the gut during embryogenesis. Acts as a negative regulator of brachyury [removed]By similarity).

#### **MIXL1 Antibody (C-term) - References**

Guo W.,et al.Blood 100:89-95(2002).  
Robb L.,et al.Dev. Dyn. 219:497-504(2000).  
Gregory S.G.,et al.Nature 441:315-321(2006).  
Mural R.J.,et al.Submitted (JUL-2005) to the EMBL/GenBank/DDBJ databases.  
Mossman A.K.,et al.Stem Cells Dev. 14:656-663(2005).