

TAL1 Antibody (C-term)
Purified Rabbit Polyclonal Antibody (Pab)
Catalog # AP21012c**Specification**

TAL1 Antibody (C-term) - Product Information

Application	WB,E
Primary Accession	P17542
Reactivity	Human
Host	Rabbit
Clonality	Polyclonal
Isotype	Rabbit IgG

TAL1 Antibody (C-term) - Additional Information**Gene ID** 6886**Other Names**

T-cell acute lymphocytic leukemia protein 1, TAL-1, Class A basic helix-loop-helix protein 17, bHLHa17, Stem cell protein, T-cell leukemia/lymphoma protein 5, TAL1, BHLHA17, SCL, TCL5

Target/Specificity

This TAL1 antibody is generated from rabbits immunized with a KLH conjugated synthetic peptide between 241-275 amino acids from the C-terminal region of human TAL1.

Dilution

WB~~1:1000

E~~Use at an assay dependent concentration.

Format

Purified polyclonal antibody supplied in PBS with 0.09% (W/V) sodium azide. This antibody is purified through a protein A column, followed by peptide affinity purification.

Storage

Maintain refrigerated at 2-8°C for up to 2 weeks. For long term storage store at -20°C in small aliquots to prevent freeze-thaw cycles.

Precautions

TAL1 Antibody (C-term) is for research use only and not for use in diagnostic or therapeutic procedures.

TAL1 Antibody (C-term) - Protein Information**Name** TAL1**Synonyms** BHLHA17, SCL, TCL5**Function** Implicated in the genesis of hemopoietic malignancies. It may play an important role in

hemopoietic differentiation. Serves as a positive regulator of erythroid differentiation (By similarity).

Cellular Location

Nucleus {ECO:0000255|PROSITE-ProRule:PRU00981}.

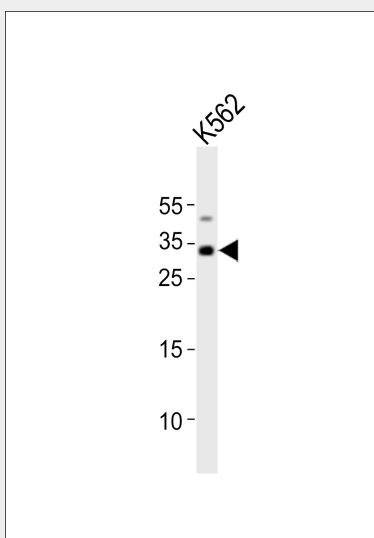
Tissue Location

Leukemic stem cell.

TAL1 Antibody (C-term) - Protocols

Provided below are standard protocols that you may find useful for product applications.

- [Western Blot](#)
- [Blocking Peptides](#)
- [Dot Blot](#)
- [Immunohistochemistry](#)
- [Immunofluorescence](#)
- [Immunoprecipitation](#)
- [Flow Cytometry](#)
- [Cell Culture](#)

TAL1 Antibody (C-term) - Images

Western blot analysis of lysate from K562 cell line, using TAL1 Antibody (C-term)(Cat. #AP21012c). AP21012c was diluted at 1:1000. A goat anti-rabbit IgG H&L(HRP) at 1:10000 dilution was used as the secondary antibody. Lysate at 20ug.

TAL1 Antibody (C-term) - Background

Implicated in the genesis of hemopoietic malignancies. It may play an important role in hemopoietic differentiation. Serves as a positive regulator of erythroid differentiation (By similarity).

TAL1 Antibody (C-term) - References

Aplan P.D.,et al.Mol. Cell. Biol. 10:6426-6435(1990).

Gregory S.G.,et al.Nature 441:315-321(2006).

Mural R.J.,et al.Submitted (SEP-2005) to the EMBL/GenBank/DDBJ databases.

Chen Q.,et al.J. Exp. Med. 172:1403-1408(1990).

Begley C.G.,et al.Proc. Natl. Acad. Sci. U.S.A. 86:10128-10132(1989).