

SNAP25 Antibody (S187)
Purified Rabbit Polyclonal Antibody (Pab)
Catalog # AP21014a**Specification**

SNAP25 Antibody (S187) - Product Information

Application	WB,E
Primary Accession	P60880
Other Accession	P60881 , P60879 , P60878 , Q170Q3 , Q5TZ66
Reactivity	Mouse
Predicted	Zebrafish, Bovine, Chicken, Rat
Host	Rabbit
Clonality	Polyclonal
Isotype	Rabbit IgG
Calculated MW	23315

SNAP25 Antibody (S187) - Additional Information**Gene ID** 6616**Other Names**

Synaptosomal-associated protein 25, SNAP-25, Super protein, SUP, Synaptosomal-associated 25 kDa protein, SNAP25, SNAP

Target/Specificity

This SNAP25 antibody is generated from a rabbit immunized with a KLH conjugated synthetic peptide between 179-213 amino acids from the region of human SNAP25.

Dilution

WB~~1:1000

E~~Use at an assay dependent concentration.

Format

Purified polyclonal antibody supplied in PBS with 0.09% (W/V) sodium azide. This antibody is purified through a protein A column, followed by peptide affinity purification.

Storage

Maintain refrigerated at 2-8°C for up to 2 weeks. For long term storage store at -20°C in small aliquots to prevent freeze-thaw cycles.

Precautions

SNAP25 Antibody (S187) is for research use only and not for use in diagnostic or therapeutic procedures.

SNAP25 Antibody (S187) - Protein Information**Name** SNAP25

Synonyms SNAP

Function t-SNARE involved in the molecular regulation of neurotransmitter release. May play an important role in the synaptic function of specific neuronal systems. Associates with proteins involved in vesicle docking and membrane fusion. Regulates plasma membrane recycling through its interaction with CENPF. Modulates the gating characteristics of the delayed rectifier voltage-dependent potassium channel KCNB1 in pancreatic beta cells.

Cellular Location

Cytoplasm, perinuclear region {ECO:0000250|UniProtKB:P60879}. Cell membrane {ECO:0000250|UniProtKB:P60881}; Lipid-anchor {ECO:0000250|UniProtKB:P60879}. Synapse, synaptosome {ECO:0000250|UniProtKB:P60879}. Photoreceptor inner segment {ECO:0000250|UniProtKB:P60879}. Note=Membrane association requires palmitoylation. Expressed throughout cytoplasm, concentrating at the perinuclear region. Colocalizes with KCNB1 at the cell membrane (By similarity). Colocalizes with PLCL1 at the cell membrane (By similarity). {ECO:0000250|UniProtKB:P60879, ECO:0000250|UniProtKB:P60881}

Tissue Location

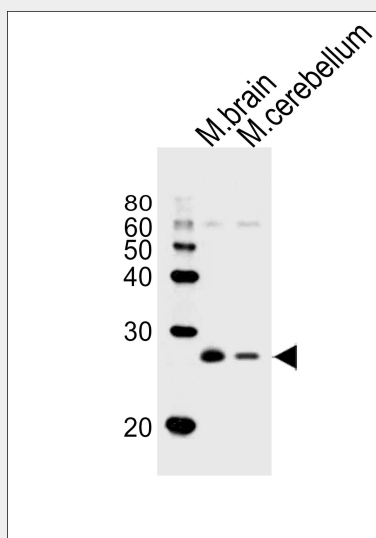
Neurons of the neocortex, hippocampus, piriform cortex, anterior thalamic nuclei, pontine nuclei, and granule cells of the cerebellum

SNAP25 Antibody (S187) - Protocols

Provided below are standard protocols that you may find useful for product applications.

- [Western Blot](#)
- [Blocking Peptides](#)
- [Dot Blot](#)
- [Immunohistochemistry](#)
- [Immunofluorescence](#)
- [Immunoprecipitation](#)
- [Flow Cytometry](#)
- [Cell Culture](#)

SNAP25 Antibody (S187) - Images



Western blot analysis of lysates from mouse brain and mouse cerebellum tissue lysate (from left

to right), using SNAP25 Antibody (S187)(Cat. #AP21014a). AP21014a was diluted at 1:1000 at each lane. A goat anti-rabbit IgG H&L(HRP) at 1:10000 dilution was used as the secondary antibody. Lysates at 20ug per lane.

SNAP25 Antibody (S187) - Background

t-SNARE involved in the molecular regulation of neurotransmitter release. May play an important role in the synaptic function of specific neuronal systems. Associates with proteins involved in vesicle docking and membrane fusion. Regulates plasma membrane recycling through its interaction with CENPF.

SNAP25 Antibody (S187) - References

Bark I.C.,et al.Gene 139:291-292(1994).
Zhao N.,et al.Gene 145:313-314(1994).
Jagadish M.N.,et al.Biochem. J. 317:945-954(1996).
Kalnine N.,et al.Submitted (OCT-2004) to the EMBL/GenBank/DDBJ databases.
Ota T.,et al.Nat. Genet. 36:40-45(2004).