

Mouse Lhx1 Antibody (Center)
Purified Rabbit Polyclonal Antibody (Pab)
Catalog # AP21022a**Specification**

Mouse Lhx1 Antibody (Center) - Product Information

Application	WB,E
Primary Accession	P63006
Other Accession	P29674 , P63007 , P48742 , P53411
Reactivity	Human, Mouse
Predicted	Chicken, Rat, Xenopus
Host	Rabbit
Clonality	Polyclonal
Isotype	Rabbit IgG
Calculated MW	44780

Mouse Lhx1 Antibody (Center) - Additional Information**Gene ID** 16869**Other Names**

LIM/homeobox protein Lhx1, LIM homeobox protein 1, Homeobox protein Lim-1, Lhx1, Lim-1, Lim1

Target/Specificity

This Mouse Lhx1 antibody is generated from a rabbit immunized with a KLH conjugated synthetic peptide between 170-204 amino acids from the Central region of Mouse Lhx1.

Dilution

WB~~1:1000

E~~Use at an assay dependent concentration.

Format

Purified polyclonal antibody supplied in PBS with 0.09% (W/V) sodium azide. This antibody is purified through a protein A column, followed by peptide affinity purification.

Storage

Maintain refrigerated at 2-8°C for up to 2 weeks. For long term storage store at -20°C in small aliquots to prevent freeze-thaw cycles.

Precautions

Mouse Lhx1 Antibody (Center) is for research use only and not for use in diagnostic or therapeutic procedures.

Mouse Lhx1 Antibody (Center) - Protein Information**Name** Lhx1**Synonyms** Lim-1, Lim1

Function Potential transcription factor. May play a role in early mesoderm formation and later in lateral mesoderm differentiation and neurogenesis.

Cellular Location

Nucleus {ECO:0000255|PROSITE-ProRule:PRU00108, ECO:0000269|PubMed:8793615}

Tissue Location

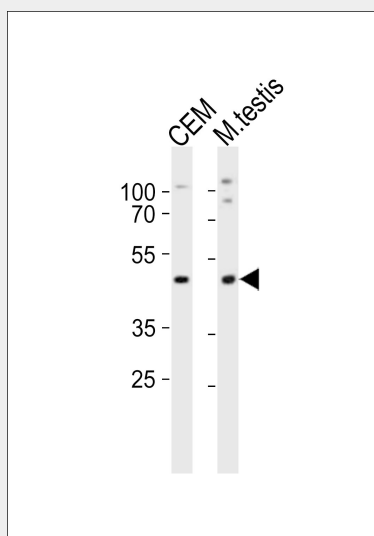
In mid to late stage embryos, expressed in a restricted region of mesoderm in the primitive streak. At 7.5 days, expressed in a horseshoe shape at the periphery of the node, as well as along both sides of the adjacent notochord. Also present in presumptive lateral and intermediate mesoderm. Later, expression become progressively restricted to intermediate mesoderm, and the developing excretory system including the pronephric region, mesonephros, nephric duct and metanephros. In the metanephros, strongly expressed in renal vesicles and S-shaped and comma-shaped bodies, as well as in the ureteric bud and its derivatives. Also expressed in the dorsal root ganglia. By stage 10.5, also expressed in regions of the central nervous system in the telencephalon through to the spinal cord. In adults, expressed in the cerebellum/medulla and kidney, and at very low levels in the cerebrum.

Mouse Lhx1 Antibody (Center) - Protocols

Provided below are standard protocols that you may find useful for product applications.

- [Western Blot](#)
- [Blocking Peptides](#)
- [Dot Blot](#)
- [Immunohistochemistry](#)
- [Immunofluorescence](#)
- [Immunoprecipitation](#)
- [Flow Cytometry](#)
- [Cell Culture](#)

Mouse Lhx1 Antibody (Center) - Images



Western blot analysis of lysates from CEM cell line, mouse testis tissue lysate (from left to right), using Lhx1 Antibody (Center)(Cat. #AP21022a). AP21022a was diluted at 1:1000 at each lane. A goat anti-rabbit IgG H&L(HRP) at 1:10000 dilution was used as the secondary antibody. Lysates at 20ug per lane.

Mouse Lhx1 Antibody (Center) - Background

Potential transcription factor. May play a role in early mesoderm formation and later in lateral mesoderm differentiation and neurogenesis.

Mouse Lhx1 Antibody (Center) - References

Fujii T.,et al.Dev. Dyn. 199:73-83(1994).
Barnes J.D.,et al.Dev. Biol. 161:168-178(1994).
Li Y.,et al.Mamm. Genome 10:444-446(1999).
Karavanov A.A.,et al.Int. J. Dev. Biol. 40:453-461(1996).
Agulnick A.D.,et al.Nature 384:270-272(1996).