

**LIFR Antibody (C-term)**  
**Purified Rabbit Polyclonal Antibody (Pab)**  
**Catalog # AP21029c****Specification**

---

**LIFR Antibody (C-term) - Product Information**

Application	WB,E
Primary Accession	<a href="#">P42702</a>
Reactivity	Human
Host	Rabbit
Clonality	Polyclonal
Isotype	Rabbit IgG
Calculated MW	123743

**LIFR Antibody (C-term) - Additional Information****Gene ID** 3977**Other Names**

Leukemia inhibitory factor receptor, LIF receptor, LIF-R, CD118, LIFR

**Target/Specificity**

This LIFR antibody is generated from a rabbit immunized with a KLH conjugated synthetic peptide between 1021-1055 amino acids from the C-terminal region of human LIFR.

**Dilution**

WB~~1:2000

E~~Use at an assay dependent concentration.

**Format**

Purified polyclonal antibody supplied in PBS with 0.09% (W/V) sodium azide. This antibody is purified through a protein A column, followed by peptide affinity purification.

**Storage**

Maintain refrigerated at 2-8°C for up to 2 weeks. For long term storage store at -20°C in small aliquots to prevent freeze-thaw cycles.

**Precautions**

LIFR Antibody (C-term) is for research use only and not for use in diagnostic or therapeutic procedures.

**LIFR Antibody (C-term) - Protein Information****Name** LIFR

**Function** Signal-transducing molecule. May have a common pathway with IL6ST. The soluble form inhibits the biological activity of LIF by blocking its binding to receptors on target cells.

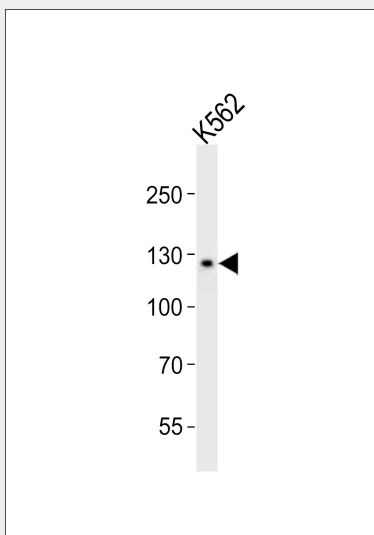
**Cellular Location**

[Isoform 1]: Cell membrane; Single-pass type I membrane protein

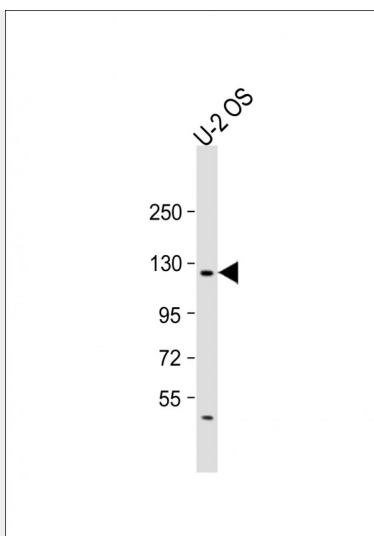
**LIFR Antibody (C-term) - Protocols**

Provided below are standard protocols that you may find useful for product applications.

- [Western Blot](#)
- [Blocking Peptides](#)
- [Dot Blot](#)
- [Immunohistochemistry](#)
- [Immunofluorescence](#)
- [Immunoprecipitation](#)
- [Flow Cytometry](#)
- [Cell Culture](#)

**LIFR Antibody (C-term) - Images**

Western blot analysis of lysate from K562 cell line, using LIFR Antibody (C-term)(Cat. #AP21029c). AP21029c was diluted at 1:1000. A goat anti-rabbit IgG H&L(HRP) at 1:10000 dilution was used as the secondary antibody. Lysate at 20ug.



Anti-LIFR Antibody (C-term) at 1:2000 dilution + U-2OS whole cell lysate Lysates/proteins at 20 µg per lane. Secondary Goat Anti-Rabbit IgG, (H+L), Peroxidase conjugated at 1/10000 dilution. Predicted band size : 124 kDa Blocking/Dilution buffer: 5% NFDM/TBST.

#### **LIFR Antibody (C-term) - Background**

Signal-transducing molecule. May have a common pathway with IL6ST. The soluble form inhibits the biological activity of LIF by blocking its binding to receptors on target cells.

#### **LIFR Antibody (C-term) - References**

- Gearing D.P.,et al.EMBO J. 10:2839-2848(1991).
- Wang Z.,et al.Submitted (AUG-1996) to the EMBL/GenBank/DDBJ databases.
- Voz M.L.,et al.Oncogene 16:1409-1416(1998).
- Dephoure N.,et al.Proc. Natl. Acad. Sci. U.S.A. 105:10762-10767(2008).
- Skiniotis G.,et al.Mol. Cell 31:737-748(2008).