

NTRK3 Antibody (Center)
Purified Rabbit Polyclonal Antibody (Pab)
Catalog # AP21038a**Specification**

NTRK3 Antibody (Center) - Product Information

Application	FC, WB,E
Primary Accession	Q16288
Other Accession	P24786 , Q5IFJ9
Reactivity	Human
Predicted	Monkey, Pig
Host	Rabbit
Clonality	Polyclonal
Isotype	Rabbit IgG
Calculated MW	94428

NTRK3 Antibody (Center) - Additional Information**Gene ID** 4916**Other Names**

NT-3 growth factor receptor, GP145-TrkC, Trk-C, Neurotrophic tyrosine kinase receptor type 3, TrkC tyrosine kinase, NTRK3, TRKC

Target/Specificity

This NTRK3 antibody is generated from a rabbit immunized with a KLH conjugated synthetic peptide between 393-426 amino acids from the Central region of human NTRK3.

Dilution

FC~~1:25

WB~~1:1000

E~~Use at an assay dependent concentration.

Format

Purified polyclonal antibody supplied in PBS with 0.09% (W/V) sodium azide. This antibody is purified through a protein A column, followed by peptide affinity purification.

Storage

Maintain refrigerated at 2-8°C for up to 2 weeks. For long term storage store at -20°C in small aliquots to prevent freeze-thaw cycles.

Precautions

NTRK3 Antibody (Center) is for research use only and not for use in diagnostic or therapeutic procedures.

NTRK3 Antibody (Center) - Protein Information**Name** NTRK3

Synonyms TRKC

Function Receptor tyrosine kinase involved in nervous system and probably heart development. Upon binding of its ligand NTF3/neurotrophin-3, NTRK3 autophosphorylates and activates different signaling pathways, including the phosphatidylinositol 3-kinase/AKT and the MAPK pathways, that control cell survival and differentiation.

Cellular Location

Membrane; Single-pass type I membrane protein.

Tissue Location

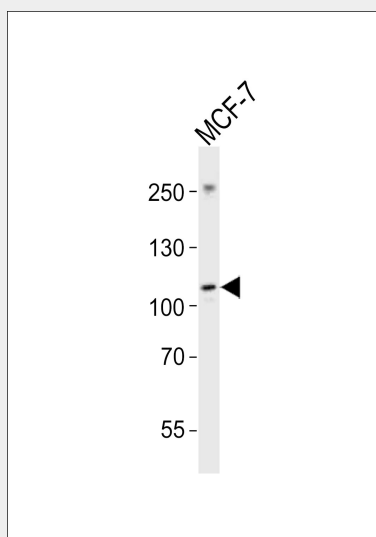
Widely expressed but mainly in nervous tissue. Isoform 2 is expressed at higher levels in adult brain than in fetal brain

NTRK3 Antibody (Center) - Protocols

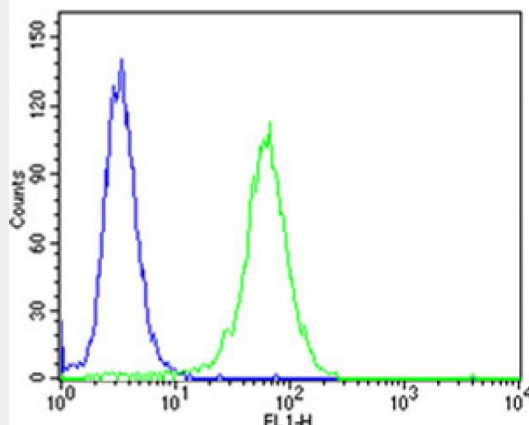
Provided below are standard protocols that you may find useful for product applications.

- [Western Blot](#)
- [Blocking Peptides](#)
- [Dot Blot](#)
- [Immunohistochemistry](#)
- [Immunofluorescence](#)
- [Immunoprecipitation](#)
- [Flow Cytometry](#)
- [Cell Culture](#)

NTRK3 Antibody (Center) - Images



Western blot analysis of lysate from MCF-7 cell line, using NTRK3 Antibody (Center)(Cat. #AP21038a). AP21038a was diluted at 1:1000. A goat anti-rabbit IgG H&L(HRP) at 1:10000 dilution was used as the secondary antibody. Lysate at 20ug.



Flow cytometric analysis of NIH-3T3 cells using NTRK3 Antibody (Center)(green, Cat#AP21038a) compared to an isotype control of rabbit IgG(blue). AP21038a was diluted at 1:25 dilution. An Alexa Fluor® 488 goat anti-rabbit IgG at 1:400 dilution was used as the secondary antibody.

NTRK3 Antibody (Center) - Background

Receptor for neurotrophin-3 (NT-3). This is a tyrosine- protein kinase receptor. Known substrates for the trk receptors are SHC1, PI-3 kinase, and PLCG1. The different isoforms do not have identical signaling properties.

NTRK3 Antibody (Center) - References

McGregor L.M.,et al.Genomics 22:267-272(1994).
Shelton D.L.,et al.J. Neurosci. 15:477-491(1995).
Ichaso N.,et al.Oncogene 17:1871-1875(1998).
Ultsch M.H.,et al.J. Mol. Biol. 290:149-159(1999).
Greenman C.,et al.Nature 446:153-158(2007).