

DECOR1 Antibody (Center)
Purified Rabbit Polyclonal Antibody (Pab)
Catalog # AP21057a**Specification**

DECOR1 Antibody (Center) - Product Information

Application	WB,E
Primary Accession	Q16698
Other Accession	Q64591 , Q9CQ62
Reactivity	Human, Mouse, Rat
Host	Rabbit
Clonality	Polyclonal
Isotype	Rabbit IgG
Calculated MW	36068

DECOR1 Antibody (Center) - Additional Information**Gene ID** 1666**Other Names**

4-dienoyl-CoA reductase, mitochondrial, 4-dienoyl-CoA reductase [NADPH], 4-enoyl-CoA reductase [NADPH], DECOR1, DECOR

Target/Specificity

This DECOR1 antibody is generated from a rabbit immunized with a KLH conjugated synthetic peptide between 241-274 amino acids from the Central region of human DECOR1.

Dilution

WB~~1:1000

E~~Use at an assay dependent concentration.

Format

Purified polyclonal antibody supplied in PBS with 0.09% (W/V) sodium azide. This antibody is purified through a protein A column, followed by peptide affinity purification.

Storage

Maintain refrigerated at 2-8°C for up to 2 weeks. For long term storage store at -20°C in small aliquots to prevent freeze-thaw cycles.

Precautions

DECOR1 Antibody (Center) is for research use only and not for use in diagnostic or therapeutic procedures.

DECOR1 Antibody (Center) - Protein Information**Name** DECOR1**Synonyms** DECOR, SDR18C1

Function Auxiliary enzyme of beta-oxidation. It participates in the metabolism of unsaturated fatty enoyl-CoA esters having double bonds in both even- and odd-numbered positions in mitochondria. Catalyzes the NADP-dependent reduction of 2,4-dienoyl-CoA to yield trans-3-enoyl-CoA.

Cellular Location

Mitochondrion.

Tissue Location

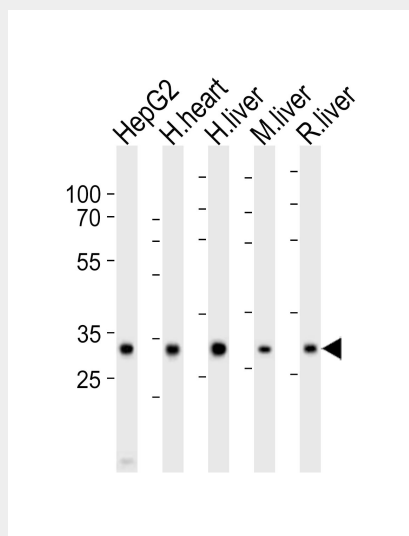
Heart = liver = pancreas > kidney >> skeletal muscle = lung.

DEC1 Antibody (Center) - Protocols

Provided below are standard protocols that you may find useful for product applications.

- [Western Blot](#)
- [Blocking Peptides](#)
- [Dot Blot](#)
- [Immunohistochemistry](#)
- [Immunofluorescence](#)
- [Immunoprecipitation](#)
- [Flow Cytometry](#)
- [Cell Culture](#)

DEC1 Antibody (Center) - Images



Western blot analysis of lysates from HepG2 cell line, human heart, human liver, mouse liver, rat liver tissue lysate (from left to right), using DEC1 Antibody (Center)(Cat. #AP21057a). AP21057a was diluted at 1:1000 at each lane. A goat anti-rabbit IgG H&L(HRP) at 1:10000 dilution was used as the secondary antibody. Lysates at 20ug per lane.

DEC1 Antibody (Center) - Background

Auxiliary enzyme of beta-oxidation. It participates in the metabolism of unsaturated fatty enoyl-CoA esters having double bonds in both even- and odd-numbered positions. Catalyzes the NADP-dependent reduction of 2,4-dienoyl-CoA to yield trans-3- enoyl-CoA.

DECRI Antibody (Center) - References

Koivuranta K.T.,et al.Biochem. J. 304:787-792(1994).
Ding J.H.,et al.Submitted (OCT-1996) to the EMBL/GenBank/DDBJ databases.
Helander H.M.,et al.Genomics 46:112-119(1997).
Nusbaum C.,et al.Nature 439:331-335(2006).
Choudhary C.,et al.Science 325:834-840(2009).