

**CHST11 Antibody (Center)**  
**Purified Rabbit Polyclonal Antibody (Pab)**  
**Catalog # AP21059a****Specification**

---

**CHST11 Antibody (Center) - Product Information**

Application	WB,E
Primary Accession	<a href="#">Q9NPF2</a>
Other Accession	<a href="#">P69478</a> , <a href="#">Q9JME2</a>
Reactivity	Human
Predicted	Mouse, Rat
Host	Rabbit
Clonality	Polyclonal
Isotype	Rabbit IgG
Calculated MW	41555

**CHST11 Antibody (Center) - Additional Information****Gene ID** 50515**Other Names**

Carbohydrate sulfotransferase 11, Chondroitin 4-O-sulfotransferase 1, Chondroitin 4-sulfotransferase 1, C4S-1, C4ST-1, C4ST1, CHST11

**Target/Specificity**

This CHST11 antibody is generated from a rabbit immunized with a KLH conjugated synthetic peptide between 246-280 amino acids from the Central region of human CHST11.

**Dilution**

WB~~1:1000

E~~Use at an assay dependent concentration.

**Format**

Purified polyclonal antibody supplied in PBS with 0.09% (W/V) sodium azide. This antibody is purified through a protein A column, followed by peptide affinity purification.

**Storage**

Maintain refrigerated at 2-8°C for up to 2 weeks. For long term storage store at -20°C in small aliquots to prevent freeze-thaw cycles.

**Precautions**

CHST11 Antibody (Center) is for research use only and not for use in diagnostic or therapeutic procedures.

**CHST11 Antibody (Center) - Protein Information****Name** CHST11

**Function** Catalyzes the transfer of sulfate to position 4 of the N- acetylgalactosamine (GalNAc) residue of chondroitin. Chondroitin sulfate constitutes the predominant proteoglycan present in cartilage and is distributed on the surfaces of many cells and extracellular matrices. Can also sulfate Gal residues in desulfated dermatan sulfate. Preferentially sulfates in GlcA->GalNAc unit than in IdoA->GalNAc unit. Does not form 4, 6-di-O-sulfated GalNAc when chondroitin sulfate C is used as an acceptor.

#### **Cellular Location**

Golgi apparatus membrane; Single- pass type II membrane protein

#### **Tissue Location**

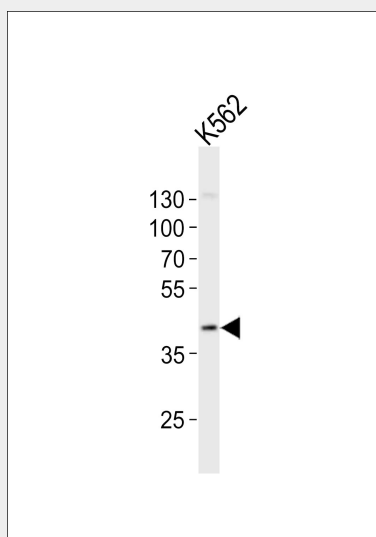
Widely expressed. Highly expressed in spleen, thymus, bone marrow, peripheral blood leukocytes, lymph node, heart, brain, lung and placenta.

### **CHST11 Antibody (Center) - Protocols**

Provided below are standard protocols that you may find useful for product applications.

- [Western Blot](#)
- [Blocking Peptides](#)
- [Dot Blot](#)
- [Immunohistochemistry](#)
- [Immunofluorescence](#)
- [Immunoprecipitation](#)
- [Flow Cytometry](#)
- [Cell Culture](#)

### **CHST11 Antibody (Center) - Images**



Western blot analysis of lysate from K562 cell line, using CHST11 Antibody (Center)(Cat. #AP21059a). AP21059a was diluted at 1:1000. A goat anti-rabbit IgG H&L(HRP) at 1:10000 dilution was used as the secondary antibody. Lysate at 20ug.

### **CHST11 Antibody (Center) - Background**

Catalyzes the transfer of sulfate to position 4 of the N-acetylgalactosamine (GalNAc) residue of chondroitin. Chondroitin sulfate constitutes the predominant proteoglycan present in cartilage and

is distributed on the surfaces of many cells and extracellular matrices. Can also sulfate Gal residues in desulfated dermatan sulfate. Preferentially sulfates in GlcA->GalNAc unit than in IdoA->GalNAc unit. Does not form 4, 6- di-O-sulfated GalNAc when chondroitin sulfate C is used as an acceptor.

#### **CHST11 Antibody (Center) - References**

Okuda T.,et al.J. Biochem. 128:763-770(2000).

Hiraoka N.,et al.J. Biol. Chem. 275:20188-20196(2000).

Xia G.,et al.Submitted (MAY-2000) to the EMBL/GenBank/DDBJ databases.

Ota T.,et al.Nat. Genet. 36:40-45(2004).

Mural R.J.,et al.Submitted (JUL-2005) to the EMBL/GenBank/DDBJ databases.