

**(DANRE) map1lc3a Antibody (C-Term)**  
**Purified Rabbit Polyclonal Antibody (Pab)**  
**Catalog # AP21075a**

**Specification**

---

**(DANRE) map1lc3a Antibody (C-Term) - Product Information**

Application	WB,E
Primary Accession	<a href="#">Q6NX90</a>
Reactivity	Human
Predicted	Zebrafish
Host	Rabbit
Clonality	Polyclonal
Isotype	Rabbit IgG

**(DANRE) map1lc3a Antibody (C-Term) - Additional Information**

**Gene ID** 406466

**Target/Specificity**

This DANRE map1lc3a antibody is generated from a rabbit immunized with a KLH conjugated synthetic peptide between 91-123 amino acids from the region of DANRE map1lc3a.

**Dilution**

WB~~1:1000

**Format**

Purified polyclonal antibody supplied in PBS with 0.09% (W/V) sodium azide. This antibody is purified through a protein A column, followed by peptide affinity purification.

**Storage**

Maintain refrigerated at 2-8°C for up to 2 weeks. For long term storage store at -20°C in small aliquots to prevent freeze-thaw cycles.

**Precautions**

(DANRE) map1lc3a Antibody (C-Term) is for research use only and not for use in diagnostic or therapeutic procedures.

**(DANRE) map1lc3a Antibody (C-Term) - Protein Information**

**Name** Q6NX90

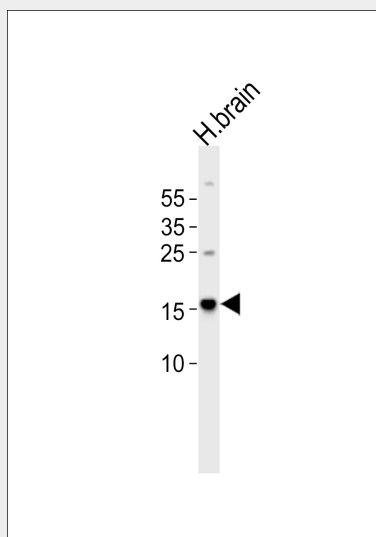
**(DANRE) map1lc3a Antibody (C-Term) - Protocols**

Provided below are standard protocols that you may find useful for product applications.

- [Western Blot](#)

- [Blocking Peptides](#)
- [Dot Blot](#)
- [Immunohistochemistry](#)
- [Immunofluorescence](#)
- [Immunoprecipitation](#)
- [Flow Cytometry](#)
- [Cell Culture](#)

#### **(DANRE) map1lc3a Antibody (C-Term) - Images**



Western blot analysis of lysate from human brain tissue, using DANRE map1lc3a Antibody (CTerm)(Cat. #AP21075a). AP21075a was diluted at 1:1000. A goat anti-rabbit IgG H&L(HRP) at 1:10000 dilution was used as the secondary antibody. Lysate at 20ug.