

**Zebrafish fundc1 Antibody (Center)**  
**Purified Rabbit Polyclonal Antibody (Pab)**  
**Catalog # AP21085a****Specification**

---

**Zebrafish fundc1 Antibody (Center) - Product Information**

Application	WB,E
Primary Accession	<a href="#">Q6DH87</a>
Reactivity	Zebrafish
Host	Rabbit
Clonality	Polyclonal
Isotype	Rabbit IgG
Antigen Region	94-126

**Zebrafish fundc1 Antibody (Center) - Additional Information****Gene ID** 436984**Other Names**

FUN14 domain-containing protein 1, fundc1

**Target/Specificity**

This Zebrafish fundc1 antibody is generated from a rabbit immunized with a KLH conjugated synthetic peptide between 94-126 amino acids from zebrafish fundc1.

**Dilution**

WB~~1:1000

E~~Use at an assay dependent concentration.

**Format**

Purified polyclonal antibody supplied in PBS with 0.09% (W/V) sodium azide. This antibody is purified through a protein A column, followed by peptide affinity purification.

**Storage**

Maintain refrigerated at 2-8°C for up to 2 weeks. For long term storage store at -20°C in small aliquots to prevent freeze-thaw cycles.

**Precautions**

Zebrafish fundc1 Antibody (Center) is for research use only and not for use in diagnostic or therapeutic procedures.

**Zebrafish fundc1 Antibody (Center) - Protein Information****Name** fundc1

**Function** Acts as an activator of hypoxia-induced mitophagy, an important mechanism for mitochondrial quality control.

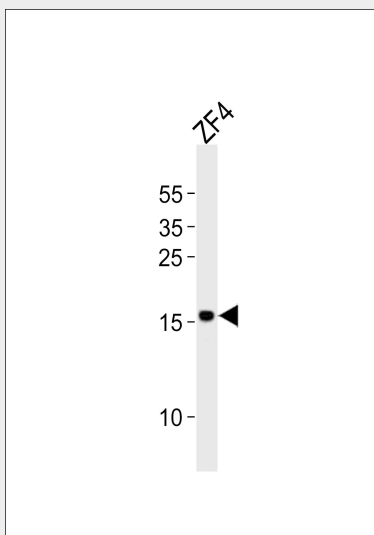
**Cellular Location**

Mitochondrion outer membrane; Multi-pass membrane protein

**Zebrafish fundc1 Antibody (Center) - Protocols**

Provided below are standard protocols that you may find useful for product applications.

- [Western Blot](#)
- [Blocking Peptides](#)
- [Dot Blot](#)
- [Immunohistochemistry](#)
- [Immunofluorescence](#)
- [Immunoprecipitation](#)
- [Flow Cytometry](#)
- [Cell Culture](#)

**Zebrafish fundc1 Antibody (Center) - Images**

Western blot analysis of lysate from ZF4 cell line, using Zebrafish fundc1 Antibody (Center) (Cat. #AP21085a). AP21085a was diluted at 1:1000. A goat anti-rabbit IgG H&L (HRP) at 1:10000 dilution was used as the secondary antibody. Lysate at 20ug.

**Zebrafish fundc1 Antibody (Center) - Background**

Acts as an activator of hypoxia-induced mitophagy, an important mechanism for mitochondrial quality control (By similarity).

**Zebrafish fundc1 Antibody (Center) - References**

Howe K., et al. Nature 496:498-503(2013).