

**NOTCH1 Antibody (C-term)**  
**Purified Rabbit Polyclonal Antibody (Pab)**  
**Catalog # AP21093a****Specification**

---

**NOTCH1 Antibody (C-term) - Product Information**

Application	WB,E
Primary Accession	<a href="#">P46531</a>
Other Accession	<a href="#">Q07008</a> , <a href="#">Q01705</a>
Reactivity	Human
Predicted	Mouse, Rat
Host	Rabbit
Clonality	Polyclonal
Isotype	Rabbit IgG
Calculated MW	272505

**NOTCH1 Antibody (C-term) - Additional Information****Gene ID** 4851**Other Names**

Neurogenic locus notch homolog protein 1, Notch 1, hN1, Translocation-associated notch protein TAN-1, Notch 1 extracellular truncation, NEXT, Notch 1 intracellular domain, NICD, NOTCH1, TAN1

**Target/Specificity**

This NOTCH1 antibody is generated from a rabbit immunized with a KLH conjugated synthetic peptide between 2428-2462 amino acids from the C-terminal region of human NOTCH1.

**Dilution**

WB~~1:1000

E~~Use at an assay dependent concentration.

**Format**

Purified polyclonal antibody supplied in PBS with 0.09% (W/V) sodium azide. This antibody is purified through a protein A column, followed by peptide affinity purification.

**Storage**

Maintain refrigerated at 2-8°C for up to 2 weeks. For long term storage store at -20°C in small aliquots to prevent freeze-thaw cycles.

**Precautions**

NOTCH1 Antibody (C-term) is for research use only and not for use in diagnostic or therapeutic procedures.

**NOTCH1 Antibody (C-term) - Protein Information****Name** NOTCH1

## Synonyms TAN1

**Function** Functions as a receptor for membrane-bound ligands Jagged-1 (JAG1), Jagged-2 (JAG2) and Delta-1 (DLL1) to regulate cell-fate determination. Upon ligand activation through the released notch intracellular domain (NICD) it forms a transcriptional activator complex with RBPJ/RBPSUH and activates genes of the enhancer of split locus. Affects the implementation of differentiation, proliferation and apoptotic programs. Involved in angiogenesis; negatively regulates endothelial cell proliferation and migration and angiogenic sprouting. Involved in the maturation of both CD4(+) and CD8(+) cells in the thymus. Important for follicular differentiation and possibly cell fate selection within the follicle. During cerebellar development, functions as a receptor for neuronal DNER and is involved in the differentiation of Bergmann glia. Represses neuronal and myogenic differentiation. May play an essential role in postimplantation development, probably in some aspect of cell specification and/or differentiation. May be involved in mesoderm development, somite formation and neurogenesis. May enhance HIF1A function by sequestering HIF1AN away from HIF1A. Required for the THBS4 function in regulating protective astrogenesis from the subventricular zone (SVZ) niche after injury. Involved in determination of left/right symmetry by modulating the balance between motile and immotile (sensory) cilia at the left-right organiser (LRO).

## Cellular Location

Cell membrane {ECO:0000250|UniProtKB:Q01705}; Single-pass type I membrane protein. Late endosome membrane; Single-pass type I membrane protein. Note=Non-activated receptor is targeted for lysosomal degradation via the endosomal pathway; transport from late endosomes to lysosomes requires deubiquitination by USP12.

## Tissue Location

In fetal tissues most abundant in spleen, brain stem and lung. Also present in most adult tissues where it is found mainly in lymphoid tissues

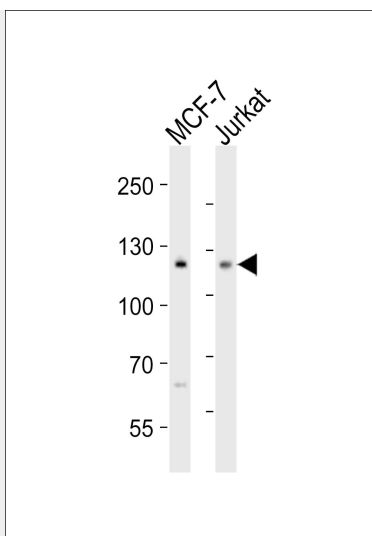
## NOTCH1 Antibody (C-term) - Protocols

Provided below are standard protocols that you may find useful for product applications.

- [Western Blot](#)
- [Blocking Peptides](#)
- [Dot Blot](#)
- [Immunohistochemistry](#)
- [Immunofluorescence](#)
- [Immunoprecipitation](#)
- [Flow Cytometry](#)
- [Cell Culture](#)

## NOTCH1 Antibody (C-term) - Images





Western blot analysis of lysates from MCF-7, Jurkat cell line (from left to right), using NOTCH1 Antibody (C-term)(Cat. #AP21093a). AP21093a was diluted at 1:1000 at each lane. A goat anti-rabbit IgG H&L(HRP) at 1:10000 dilution was used as the secondary antibody. Lysates at 20ug per lane.

#### **NOTCH1 Antibody (C-term) - Background**

Functions as a receptor for membrane-bound ligands Jagged1, Jagged2 and Delta1 to regulate cell-fate determination. Upon ligand activation through the released notch intracellular domain (NICD) it forms a transcriptional activator complex with RBPJ/RBPSUH and activates genes of the enhancer of split locus. Affects the implementation of differentiation, proliferation and apoptotic programs. Involved in angiogenesis; negatively regulates endothelial cell proliferation and migration and angiogenic sprouting. Involved in the maturation of both CD4+ and CD8+ cells in the thymus. Important for follicular differentiation and possibly cell fate selection within the follicle. During cerebellar development, functions as a receptor for neuronal DNER and is involved in the differentiation of Bergmann glia. Represses neuronal and myogenic differentiation. May play an essential role in postimplantation development, probably in some aspect of cell specification and/or differentiation. May be involved in mesoderm development, somite formation and neurogenesis. May enhance HIF1A function by sequestering HIF1AN away from HIF1A. Required for the THBS4 function in regulating protective astrocytogenesis from the subventricular zone (SVZ) niche after injury. Involved in determination of left/right symmetry by modulating the balance between motile and immotile (sensory) cilia at the left-right organiser (LRO).

#### **NOTCH1 Antibody (C-term) - References**

Mann R.S.,et al.Submitted (SEP-2000) to the EMBL/GenBank/DDBJ databases.  
Humphray S.J.,et al.Nature 429:369-374(2004).  
Ellisen L.W.,et al.Cell 66:649-661(1991).  
Totoki Y.,et al.Submitted (MAR-2005) to the EMBL/GenBank/DDBJ databases.  
Coleman M.L.,et al.J. Biol. Chem. 282:24027-24038(2007).

#### **NOTCH1 Antibody (C-term) - Citations**

- [Dipeptide  \$\gamma\$ -secretase inhibitor treatment enhances the anti-tumor effects of cisplatin against gastric cancer by suppressing cancer stem cell properties.](#)