

**CHRM1 Antibody (C-term)**  
**Purified Rabbit Polyclonal Antibody (Pab)**  
**Catalog # AP21104a****Specification**

---

**CHRM1 Antibody (C-term) - Product Information**

Application	WB,E
Primary Accession	<a href="#">P11229</a>
Reactivity	Mouse
Host	Rabbit
Clonality	Polyclonal
Isotype	Rabbit IgG
Calculated MW	51421

**CHRM1 Antibody (C-term) - Additional Information****Gene ID** 1128**Other Names**

Muscarinic acetylcholine receptor M1, CHRM1

**Target/Specificity**

This CHRM1 antibody is generated from a rabbit immunized with a KLH conjugated synthetic peptide between 331-367 amino acids from the C-terminal region of human CHRM1.

**Dilution**

WB~~1:1000

E~~Use at an assay dependent concentration.

**Format**

Purified polyclonal antibody supplied in PBS with 0.09% (W/V) sodium azide. This antibody is purified through a protein A column, followed by peptide affinity purification.

**Storage**

Maintain refrigerated at 2-8°C for up to 2 weeks. For long term storage store at -20°C in small aliquots to prevent freeze-thaw cycles.

**Precautions**

CHRM1 Antibody (C-term) is for research use only and not for use in diagnostic or therapeutic procedures.

**CHRM1 Antibody (C-term) - Protein Information****Name** CHRM1

**Function** The muscarinic acetylcholine receptor mediates various cellular responses, including inhibition of adenylate cyclase, breakdown of phosphoinositides and modulation of potassium channels through the action of G proteins. Primary transducing effect is Pi turnover.

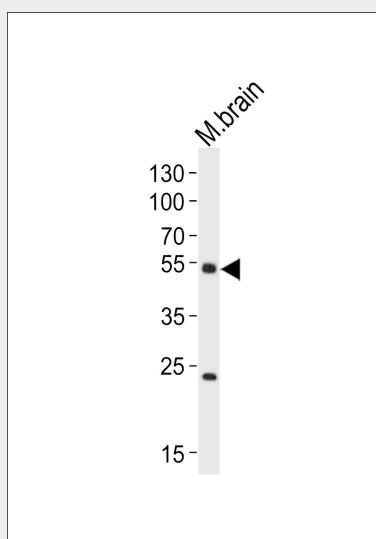
**Cellular Location**

Cell membrane; Multi-pass membrane protein. Postsynaptic cell membrane; Multi-pass membrane protein

**CHRM1 Antibody (C-term) - Protocols**

Provided below are standard protocols that you may find useful for product applications.

- [Western Blot](#)
- [Blocking Peptides](#)
- [Dot Blot](#)
- [Immunohistochemistry](#)
- [Immunofluorescence](#)
- [Immunoprecipitation](#)
- [Flow Cytometry](#)
- [Cell Culture](#)

**CHRM1 Antibody (C-term) - Images**

Western blot analysis of lysate from mouse brain tissue lysate, using CHRM1 Antibody (C-term)(Cat. #AP21104a). AP21104a was diluted at 1:1000. A goat anti-rabbit IgG H&L(HRP) at 1:10000 dilution was used as the secondary antibody. Lysate at 20ug.

**CHRM1 Antibody (C-term) - Background**

The muscarinic acetylcholine receptor mediates various cellular responses, including inhibition of adenylate cyclase, breakdown of phosphoinositides and modulation of potassium channels through the action of G proteins. Primary transducing effect is  $P_i$  turnover.

**CHRM1 Antibody (C-term) - References**

Allard W.J.,et al.Nucleic Acids Res. 15:10604-10604(1987).  
Chapman C.G.,et al.Nucleic Acids Res. 18:2191-2191(1990).  
Peralta E.G.,et al.EMBO J. 6:3923-3929(1987).  
Puhl H.L. III,et al.Submitted (APR-2002) to the EMBL/GenBank/DDBJ databases.  
Arden J.R.,et al.Biochem. Biophys. Res. Commun. 188:1111-1115(1992).