

**NACC1 Antibody (C-term)**  
**Purified Rabbit Polyclonal Antibody (Pab)**  
**Catalog # AP21107a****Specification**

---

**NACC1 Antibody (C-term) - Product Information**

Application	WB,E
Primary Accession	<a href="#">Q96RE7</a>
Other Accession	<a href="#">O35260</a> , <a href="#">Q7TSZ8</a>
Reactivity	Mouse
Predicted	Rat
Host	Rabbit
Clonality	Polyclonal
Isotype	Rabbit IgG
Calculated MW	57258

**NACC1 Antibody (C-term) - Additional Information****Gene ID** 112939**Other Names**

Nucleus accumbens-associated protein 1, NAC-1, BTB/POZ domain-containing protein 14B, NACC1, BTBD14B, NAC1

**Target/Specificity**

This NACC1 antibody is generated from a rabbit immunized with a KLH conjugated synthetic peptide between 355-390 amino acids from the C-terminal region of human NACC1.

**Dilution**

WB~~1:1000

E~~Use at an assay dependent concentration.

**Format**

Purified polyclonal antibody supplied in PBS with 0.09% (W/V) sodium azide. This antibody is purified through a protein A column, followed by peptide affinity purification.

**Storage**

Maintain refrigerated at 2-8°C for up to 2 weeks. For long term storage store at -20°C in small aliquots to prevent freeze-thaw cycles.

**Precautions**

NACC1 Antibody (C-term) is for research use only and not for use in diagnostic or therapeutic procedures.

**NACC1 Antibody (C-term) - Protein Information****Name** NACC1

**Synonyms** BTBD14B, NAC1

**Function** Functions as a transcriptional repressor. Seems to function as a transcriptional corepressor in neuronal cells through recruitment of HDAC3 and HDAC4. Contributes to tumor progression, and tumor cell proliferation and survival. This may be mediated at least in part through repressing transcriptional activity of GADD45GIP1. Required for recruiting the proteasome from the nucleus to the cytoplasm and dendritic spines.

**Cellular Location**

Nucleus. Cytoplasm. Note=Distribution in the cytoplasm is dependent on phosphorylation.

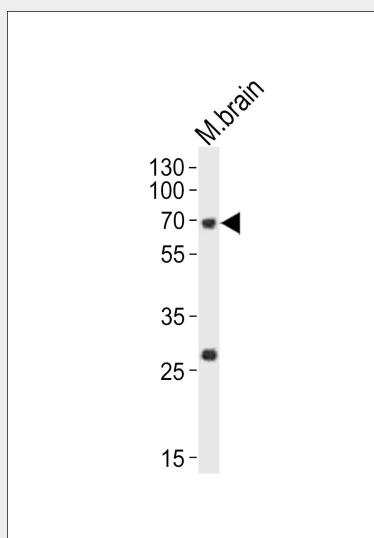
**Tissue Location**

Overexpressed in several types of carcinomas including ovarian serous carcinomas. Expression levels positively correlate with tumor recurrence in ovarian serous carcinomas, and intense immunoreactivity in primary ovarian tumors predicts early recurrence. Up-regulated in ovarian carcinomas after chemotherapy, suggesting a role in development of chemotherapy resistance in ovarian cancer.

**NACC1 Antibody (C-term) - Protocols**

Provided below are standard protocols that you may find useful for product applications.

- [Western Blot](#)
- [Blocking Peptides](#)
- [Dot Blot](#)
- [Immunohistochemistry](#)
- [Immunofluorescence](#)
- [Immunoprecipitation](#)
- [Flow Cytometry](#)
- [Cell Culture](#)

**NACC1 Antibody (C-term) - Images**

Western blot analysis of lysate from mouse brain tissue lysate, using NACC1 Antibody (C-term)(Cat. #AP21107a). AP21107a was diluted at 1:1000. A goat anti-rabbit IgG H&L(HRP) at 1:10000 dilution was used as the secondary antibody. Lysate at 20ug.

**NACC1 Antibody (C-term) - Background**

Functions as a transcriptional repressor. Seems to function as a transcriptional corepressor in neuronal cells through recruitment of HDAC3 and HDAC4. Contributes to tumor progression, and tumor cell proliferation and survival. This may be mediated at least in part through repressing transcriptional activity of GADD45GIP1. Required for recruiting the proteasome from the nucleus to the cytoplasm and dendritic spines.

#### **NACC1 Antibody (C-term) - References**

Cha X.Y.,et al.Submitted (JUN-2001) to the EMBL/GenBank/DDBJ databases.  
Nakayama K.,et al.Proc. Natl. Acad. Sci. U.S.A. 103:18739-18744(2006).  
Nakayama K.,et al.Cancer Res. 67:8058-8064(2007).  
Davidson B.,et al.Hum. Pathol. 38:1030-1036(2007).  
Dephoure N.,et al.Proc. Natl. Acad. Sci. U.S.A. 105:10762-10767(2008).