

LMCD1 Antibody (C-term)
Purified Rabbit Polyclonal Antibody (Pab)
Catalog # AP21108a**Specification**

LMCD1 Antibody (C-term) - Product Information

Application	WB,E
Primary Accession	O9NZU5
Reactivity	Human, Mouse, Rat
Host	Rabbit
Clonality	Polyclonal
Isotype	Rabbit IgG
Calculated MW	40833
Antigen Region	316-350

LMCD1 Antibody (C-term) - Additional Information**Gene ID** 29995**Other Names**

LIM and cysteine-rich domains protein 1, Dyxin, LMCD1

Target/Specificity

This LMCD1 antibody is generated from a rabbit immunized with a KLH conjugated synthetic peptide between 316-350 amino acids from the C-terminal region of human LMCD1.

Dilution

WB~~1:1000

E~~Use at an assay dependent concentration.

Format

Purified polyclonal antibody supplied in PBS with 0.09% (W/V) sodium azide. This antibody is purified through a protein A column, followed by peptide affinity purification.

Storage

Maintain refrigerated at 2-8°C for up to 2 weeks. For long term storage store at -20°C in small aliquots to prevent freeze-thaw cycles.

Precautions

LMCD1 Antibody (C-term) is for research use only and not for use in diagnostic or therapeutic procedures.

LMCD1 Antibody (C-term) - Protein Information**Name** LMCD1

Function Transcriptional cofactor that restricts GATA6 function by inhibiting DNA-binding, resulting in repression of GATA6 transcriptional activation of downstream target genes. Represses

GATA6- mediated trans activation of lung- and cardiac tissue-specific promoters. Inhibits DNA-binding by GATA4 and GATA1 to the cTNC promoter (By similarity). Plays a critical role in the development of cardiac hypertrophy via activation of calcineurin/nuclear factor of activated T-cells signaling pathway.

Cellular Location

Cytoplasm. Nucleus. Note=May shuttle between the cytoplasm and the nucleus.

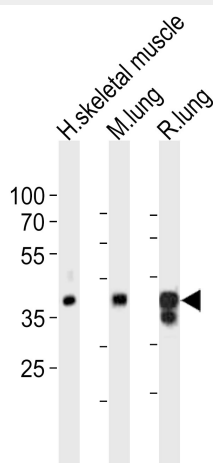
Tissue Location

Expressed in the heart (at protein level). Expressed in many tissues with highest abundance in skeletal muscle

LMCD1 Antibody (C-term) - Protocols

Provided below are standard protocols that you may find useful for product applications.

- [Western Blot](#)
- [Blocking Peptides](#)
- [Dot Blot](#)
- [Immunohistochemistry](#)
- [Immunofluorescence](#)
- [Immunoprecipitation](#)
- [Flow Cytometry](#)
- [Cell Culture](#)

LMCD1 Antibody (C-term) - Images

Western blot analysis of lysates from human skeletal muscle, mouse lung, rat lung tissue lysate (from left to right), using LMCD1 Antibody (C-term)(Cat. #AP21108a). AP21108a was diluted at 1:1000 at each lane. A goat anti-rabbit IgG H&L(HRP) at 1:10000 dilution was used as the secondary antibody. Lysates at 20ug per lane.

LMCD1 Antibody (C-term) - Background

Transcriptional cofactor that restricts GATA6 function by inhibiting DNA-binding, resulting in repression of GATA6 transcriptional activation of downstream target genes. Represses GATA6-mediated trans activation of lung- and cardiac tissue- specific promoters. Inhibits

DNA-binding by GATA4 and GATA1 to the cTNC promoter (By similarity). Plays a critical role in the development of cardiac hypertrophy via activation of calcineurin/nuclear factor of activated T-cells signaling pathway.

LMCD1 Antibody (C-term) - References

Bespalova I.N.,et al.Genomics 63:69-74(2000).
Holt H.H.,et al.Submitted (DEC-1999) to the EMBL/GenBank/DDBJ databases.
Ota T.,et al.Nat. Genet. 36:40-45(2004).
Rath N.,et al.Mol. Cell. Biol. 25:8864-8873(2005).
Bian Z.Y.,et al.Hypertension 55:257-263(2010).