

UBE4A Antibody (C-term)
Purified Rabbit Polyclonal Antibody (Pab)
Catalog # AP2110b**Specification**

UBE4A Antibody (C-term) - Product Information

Application	WB, IHC-P,E
Primary Accession	Q14139
Other Accession	Q6P7A2 , E9Q735 , A5PKG6 , NP_004779
Reactivity	Human
Predicted	Bovine, Mouse, Rat
Host	Rabbit
Clonality	Polyclonal
Isotype	Rabbit IgG
Antigen Region	1037-1067

UBE4A Antibody (C-term) - Additional Information**Gene ID** 9354**Other Names**

Ubiquitin conjugation factor E4 A, 632-, UBE4A (HGNC:12499)

Target/Specificity

This UBE4A antibody is generated from rabbits immunized with a KLH conjugated synthetic peptide between 1037-1067 amino acids from the C-terminal region of human UBE4A.

Dilution

WB~~1:1000
IHC-P~~1:50~100
E~~Use at an assay dependent concentration.

Format

Purified polyclonal antibody supplied in PBS with 0.09% (W/V) sodium azide. This antibody is prepared by Saturated Ammonium Sulfate (SAS) precipitation followed by dialysis against PBS.

Storage

Maintain refrigerated at 2-8°C for up to 2 weeks. For long term storage store at -20°C in small aliquots to prevent freeze-thaw cycles.

Precautions

UBE4A Antibody (C-term) is for research use only and not for use in diagnostic or therapeutic procedures.

UBE4A Antibody (C-term) - Protein Information

Name UBE4A ([HGNC:12499](#))

Function Ubiquitin-protein ligase that probably functions as an E3 ligase in conjunction with specific E1 and E2 ligases. May also function as an E4 ligase mediating the assembly of polyubiquitin chains on substrates ubiquitinated by another E3 ubiquitin ligase. Mediates 'Lys-48'-linked polyubiquitination of substrates.

Cellular Location

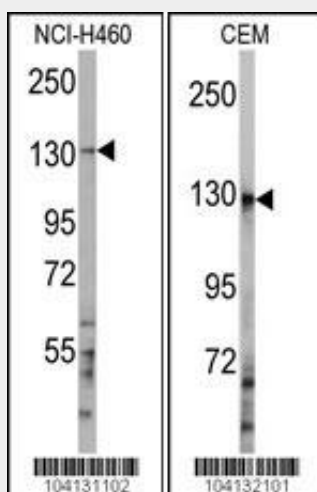
Cytoplasm {ECO:0000250|UniProtKB:E9Q735}.

UBE4A Antibody (C-term) - Protocols

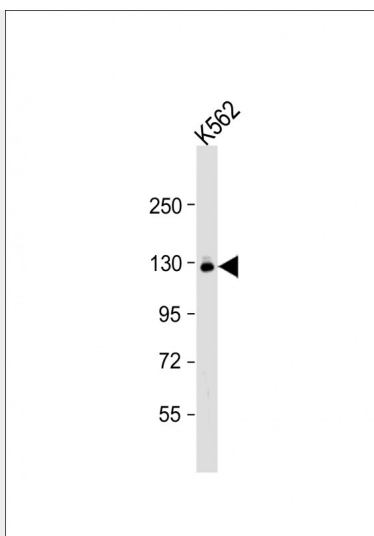
Provided below are standard protocols that you may find useful for product applications.

- [Western Blot](#)
- [Blocking Peptides](#)
- [Dot Blot](#)
- [Immunohistochemistry](#)
- [Immunofluorescence](#)
- [Immunoprecipitation](#)
- [Flow Cytometry](#)
- [Cell Culture](#)

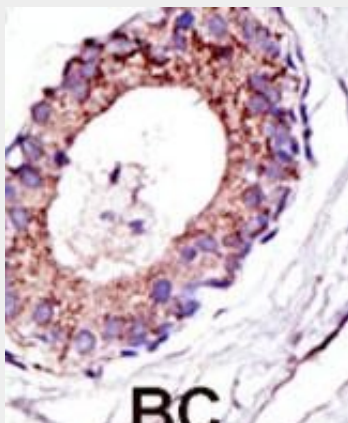
UBE4A Antibody (C-term) - Images



Western blot analysis of anti-UBE4A Antibody (C-term) (Cat.#AP2110b) in NCI-H460 and CEM cell line lysates (35ug/lane). UBE4A (arrow) was detected using the purified Pab.



Anti-UBE4A Antibody (T1052) at 1:1000 dilution + K562 whole cell lysate Lysates/proteins at 20 µg per lane. Secondary Goat Anti-Rabbit IgG, (H+L), Peroxidase conjugated at 1/10000 dilution. Predicted band size : 123 kDa Blocking/Dilution buffer: 5% NFDM/TBST.



Formalin-fixed and paraffin-embedded human cancer tissue reacted with the primary antibody, which was peroxidase-conjugated to the secondary antibody, followed by DAB staining. This data demonstrates the use of this antibody for immunohistochemistry; clinical relevance has not been evaluated. BC = breast carcinoma; HC = hepatocarcinoma.

UBE4A Antibody (C-term) - Background

Ubiquitination requires a ubiquitin-activating enzyme, a ubiquitin-conjugating enzyme, and usually a substrate-specific ubiquitin-protein ligase. Multiubiquitination needs a fourth factor, to bind to the ubiquitin moieties of preformed conjugates and catalyze ubiquitin chain assembly in conjunction with the first three proteins.¹ Human protein KIAA0126, with a predicted 1,073 amino acid residues, is a member of the novel protein family defined by ubiquitination conjugation factor E4.² In yeast, E4 activity is linked to cell survival under stress conditions, indicating that eucaryotes use E4-dependent proteolysis pathways for multiple cellular functions.

UBE4A Antibody (C-term) - References

Nagase, T., et al., DNA Res. 2(4):167-174 (1995).