

LIPI Antibody (Center)
Purified Rabbit Polyclonal Antibody (Pab)
Catalog # AP21120a**Specification**

LIPI Antibody (Center) - Product Information

| | |
|-------------------|------------------------|
| Application | WB,E |
| Primary Accession | Q6XZB0 |
| Reactivity | Human |
| Host | Rabbit |
| Clonality | Polyclonal |
| Isotype | Rabbit IgG |
| Calculated MW | 52922 |
| Antigen Region | 224-258 |

LIPI Antibody (Center) - Additional Information**Gene ID** 149998**Other Names**

Lipase member I, LIPI, 311-, Cancer/testis antigen 17, CT17, LPD lipase, Membrane-associated phosphatidic acid-selective phospholipase A1-beta, mPA-PLA1 beta, LIPI, LPDL

Target/Specificity

This LIPI antibody is generated from a rabbit immunized with a KLH conjugated synthetic peptide between 224-258 amino acids from the Central region of human LIPI.

Dilution

WB~~1:1000

E~~Use at an assay dependent concentration.

Format

Purified polyclonal antibody supplied in PBS with 0.09% (W/V) sodium azide. This antibody is purified through a protein A column, followed by peptide affinity purification.

Storage

Maintain refrigerated at 2-8°C for up to 2 weeks. For long term storage store at -20°C in small aliquots to prevent freeze-thaw cycles.

Precautions

LIPI Antibody (Center) is for research use only and not for use in diagnostic or therapeutic procedures.

LIPI Antibody (Center) - Protein Information**Name** LIPI**Synonyms** LPDL

Function Hydrolyzes specifically phosphatidic acid (PA) to produce 2- acyl lysophosphatidic acid (LPA; a potent bioactive lipid mediator) and fatty acid. Does not hydrolyze other phospholipids, like phosphatidylserine (PS), phosphatidylcholine (PC) and phosphatidylethanolamine (PE) or triacylglycerol (TG).

Cellular Location

[Isoform 1]: Cell membrane. Secreted Note=May associate with lipid draft.

Tissue Location

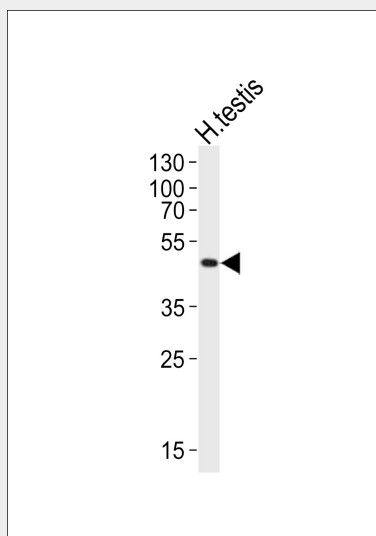
Expressed in testis. Expressed exclusively at the connecting piece of the sperm.

LIPI Antibody (Center) - Protocols

Provided below are standard protocols that you may find useful for product applications.

- [Western Blot](#)
- [Blocking Peptides](#)
- [Dot Blot](#)
- [Immunohistochemistry](#)
- [Immunofluorescence](#)
- [Immunoprecipitation](#)
- [Flow Cytometry](#)
- [Cell Culture](#)

LIPI Antibody (Center) - Images



Western blot analysis of lysate from human testis tissue lysate, using LIPI Antibody (Center)(Cat. #AP21120a). AP21120a was diluted at 1:1000. A goat anti-rabbit IgG H&L(HRP) at 1:10000 dilution was used as the secondary antibody. Lysate at 20ug.

LIPI Antibody (Center) - Background

Hydrolyzes specifically phosphatidic acid (PA) to produce 2-acyl lysophosphatidic acid (LPA; a potent bioactive lipid mediator) and fatty acid. Does not hydrolyze other phospholipids, like phosphatidylserine (PS), phosphatidylcholine (PC) and phosphatidylethanolamine (PE) or triacylglycerol (TG).

LIPI Antibody (Center) - References

Hiramatsu T.,et al.J. Biol. Chem. 278:49438-49447(2003).
Wen X.-Y.,et al.Hum. Mol. Genet. 12:1131-1143(2003).
Hattori M.,et al.Nature 405:311-319(2000).