

DGCR14 Antibody (C-term)
Purified Rabbit Polyclonal Antibody (Pab)
Catalog # AP21121a**Specification**

DGCR14 Antibody (C-term) - Product Information

Application	WB,E
Primary Accession	Q96DF8
Other Accession	O70279
Reactivity	Human
Predicted	Mouse
Host	Rabbit
Clonality	Polyclonal
Isotype	Rabbit IgG
Calculated MW	52568

DGCR14 Antibody (C-term) - Additional Information**Gene ID** 8220**Other Names**

Protein DGCR14, DiGeorge syndrome critical region 13, DiGeorge syndrome critical region 14, DiGeorge syndrome protein H, DGS-H, Protein ES2, DGCR14, DGCR13, DGSH, DGS1, ES2

Target/Specificity

This DGCR14 antibody is generated from a rabbit immunized with a KLH conjugated synthetic peptide between 449-482 amino acids from the C-terminal region of human DGCR14.

Dilution

WB~~1:1000

E~~Use at an assay dependent concentration.

Format

Purified polyclonal antibody supplied in PBS with 0.09% (W/V) sodium azide. This antibody is purified through a protein A column, followed by peptide affinity purification.

Storage

Maintain refrigerated at 2-8°C for up to 2 weeks. For long term storage store at -20°C in small aliquots to prevent freeze-thaw cycles.

Precautions

DGCR14 Antibody (C-term) is for research use only and not for use in diagnostic or therapeutic procedures.

DGCR14 Antibody (C-term) - Protein Information**Name** ESS2 ([HGNC:16817](#))

Function May be involved in pre-mRNA splicing.

Cellular Location

Nucleus {ECO:0000250|UniProtKB:P34420}.

Tissue Location

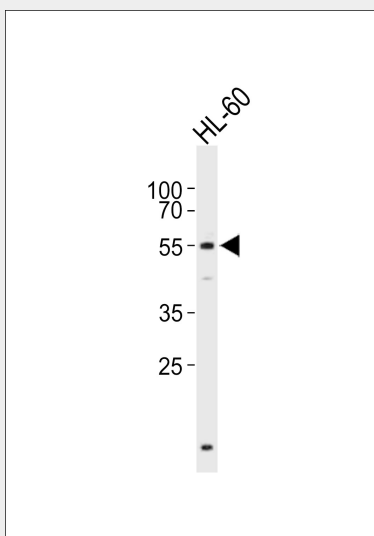
Highly expressed in heart, brain and skeletal muscle. Detected at low levels in placenta

DGCR14 Antibody (C-term) - Protocols

Provided below are standard protocols that you may find useful for product applications.

- [Western Blot](#)
- [Blocking Peptides](#)
- [Dot Blot](#)
- [Immunohistochemistry](#)
- [Immunofluorescence](#)
- [Immunoprecipitation](#)
- [Flow Cytometry](#)
- [Cell Culture](#)

DGCR14 Antibody (C-term) - Images



Western blot analysis of lysate from HL-60 cell line, using DGCR14 Antibody (C-term)(Cat. #AP21121a). AP21121a was diluted at 1:1000. A goat anti-rabbit IgG H&L(HRP) at 1:10000 dilution was used as the secondary antibody. Lysate at 20ug.

DGCR14 Antibody (C-term) - Background

May be involved in pre-mRNA splicing.

DGCR14 Antibody (C-term) - References

Lindsay E.A.,et al.Genomics 32:104-112(1996).
Rizzu P.,et al.Mamm. Genome 7:639-643(1996).
Collins J.E.,et al.Genome Biol. 5:R84.1-R84.11(2004).
Gong W.,et al.Hum. Mol. Genet. 5:789-800(1996).

Jurica M.S.,et al.RNA 8:426-439(2002).