

Mouse Srms Antibody (Center)
Purified Rabbit Polyclonal Antibody (Pab)
Catalog # AP21128a**Specification**

Mouse Srms Antibody (Center) - Product Information

| | |
|-------------------|------------------------|
| Application | WB, IF, E |
| Primary Accession | Q62270 |
| Reactivity | Mouse |
| Host | Rabbit |
| Clonality | Polyclonal |
| Isotype | Rabbit IgG |
| Calculated MW | 55758 |
| Antigen Region | 113-147 |

Mouse Srms Antibody (Center) - Additional Information**Other Names**

Tyrosine-protein kinase Srms, PTK70, Srms, Srm

Target/Specificity

This Mouse Srms antibody is generated from a rabbit immunized with a KLH conjugated synthetic peptide between 113-147 amino acids from the Central region of Mouse Srms.

Dilution

WB~~1:2000

IF~~1:25

E~~Use at an assay dependent concentration.

Format

Purified polyclonal antibody supplied in PBS with 0.09% (W/V) sodium azide. This antibody is purified through a protein A column, followed by peptide affinity purification.

Storage

Maintain refrigerated at 2-8°C for up to 2 weeks. For long term storage store at -20°C in small aliquots to prevent freeze-thaw cycles.

Precautions

Mouse Srms Antibody (Center) is for research use only and not for use in diagnostic or therapeutic procedures.

Mouse Srms Antibody (Center) - Protein Information**Name** Srms**Synonyms** Srm

Function Non-receptor tyrosine-protein kinase which phosphorylates DOK1 on tyrosine residues.

Also phosphorylates KHDRBS1/SAM68 and VIM on tyrosine residues. Phosphorylation of KHDRBS1 is EGF-dependent. Phosphorylates OTUB1, promoting deubiquitination of RPTOR.

Cellular Location

Cytoplasm {ECO:0000250|UniProtKB:Q9H3Y6}. Note=Localizes to punctate cytoplasmic structures {ECO:0000250|UniProtKB:Q9H3Y6}

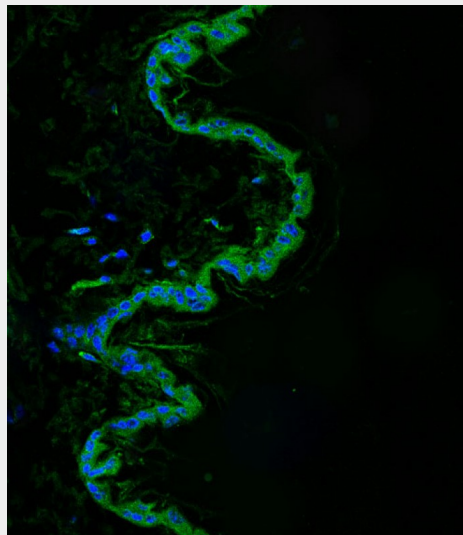
Tissue Location

Higher expression in liver, lung, thymus and skin than in brain, kidney, heart and spleen (PubMed:9226137). In skin, highly expressed in keratinocytes (PubMed:9226137). Abundant in lung, liver, spleen, kidney and testis and is also detected in the cerebrum (PubMed:7935409).

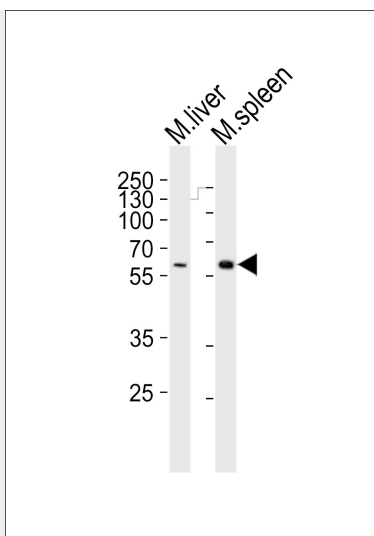
Mouse Srms Antibody (Center) - Protocols

Provided below are standard protocols that you may find useful for product applications.

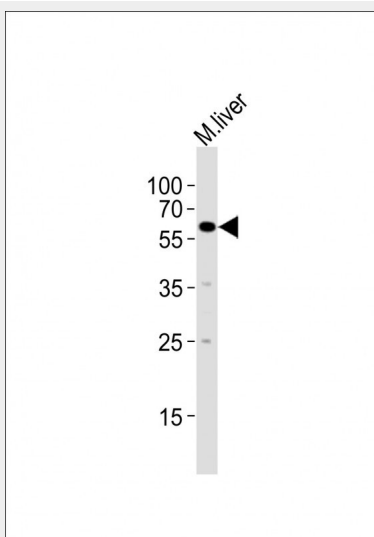
- [Western Blot](#)
- [Blocking Peptides](#)
- [Dot Blot](#)
- [Immunohistochemistry](#)
- [Immunofluorescence](#)
- [Immunoprecipitation](#)
- [Flow Cytometry](#)
- [Cell Culture](#)

Mouse Srms Antibody (Center) - Images

Immunofluorescent analysis of 4% paraformaldehyde-fixed, 0.1% Triton X-100 permeabilized mouse skin tissue labeling Mouse Srms with AP21128a at 1/25 dilution, followed by Alexa Fluor 488-conjugated goat anti-rabbit IgG (1583138) secondary antibody at 1/400 dilution (green). Confocal image showing cytoplasm staining on mouse skin tissue. The nuclear counter stain is DAPI (blue).



Western blot analysis of lysates from mouse liver, mouse spleen tissue lysate (from left to right), using Srms Antibody (Center)(Cat. #AP21128a). AP21128a was diluted at 1:1000 at each lane. A goat anti-rabbit IgG H&L(HRP) at 1:10000 dilution was used as the secondary antibody. Lysates at 20ug per lane.



Anti-Srms Antibody (C-term) at 1:2000 dilution + mouse liver lysates Lysates/proteins at 20 µg per lane. Secondary Goat Anti-Rabbit IgG, (H+L), Peroxidase conjugated at 1/10000 dilution Predicted band size : 56 kDa Blocking/Dilution buffer: 5% NFDM/TBST.

Mouse Srms Antibody (Center) - Background

Non-receptor tyrosine-protein kinase which phosphorylates DOK1 on tyrosine residues. May be involved in proliferation or differentiation of keratinocytes in the skin.

Mouse Srms Antibody (Center) - References

Kawachi Y.,et al.Exp. Dermatol. 6:140-146(1997).
Kohmura N.,et al.Mol. Cell. Biol. 14:6915-6925(1994).
Wall M.,et al.Submitted (APR-2001) to the EMBL/GenBank/DDBJ databases.