

CXCL11 Antibody
Purified Rabbit Polyclonal Antibody (Pab)
Catalog # AP21132a

Specification

CXCL11 Antibody - Product Information

Application	WB,E
Primary Accession	O14625
Reactivity	Rat
Host	Rabbit
Clonality	polyclonal
Isotype	Rabbit IgG
Calculated MW	10365

CXCL11 Antibody - Additional Information

Gene ID 6373

Other Names

C-X-C motif chemokine 11, Beta-R1, H174, Interferon gamma-inducible protein 9, IP-9, Interferon-inducible T-cell alpha chemoattractant, I-TAC, Small-inducible cytokine B11, CXCL11, ITAC, SCYB11, SCYB9B

Target/Specificity

This CXCL11 antibody is generated from a rabbit immunized with a recombinant protein of human CXCL11.

Dilution

WB~~1:2000
E~~Use at an assay dependent concentration.

Format

Purified polyclonal antibody supplied in PBS with 0.09% (W/V) sodium azide. This antibody is purified through a protein A column, followed by peptide affinity purification.

Storage

Maintain refrigerated at 2-8°C for up to 2 weeks. For long term storage store at -20°C in small aliquots to prevent freeze-thaw cycles.

Precautions

CXCL11 Antibody is for research use only and not for use in diagnostic or therapeutic procedures.

CXCL11 Antibody - Protein Information

Name CXCL11

Synonyms ITAC, SCYB11, SCYB9B

Function Chemotactic for interleukin-activated T-cells but not unstimulated T-cells, neutrophils or monocytes. Induces calcium release in activated T-cells. Binds to CXCR3. May play an important role in CNS diseases which involve T-cell recruitment. May play a role in skin immune responses.

Cellular Location
Secreted.

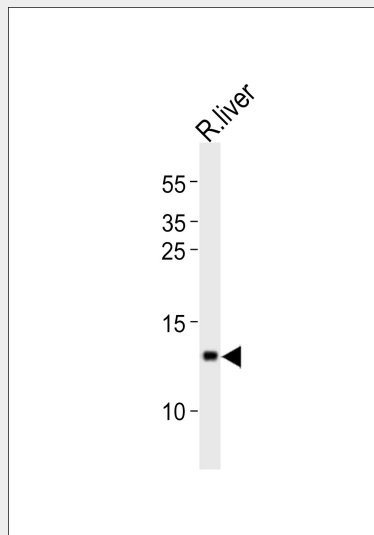
Tissue Location
High levels in peripheral blood leukocytes, pancreas and liver astrocytes. Moderate levels in thymus, spleen and lung. Low levels in placenta, prostate and small intestine. Also found in epidermal basal layer keratinocytes in skin disorders

CXCL11 Antibody - Protocols

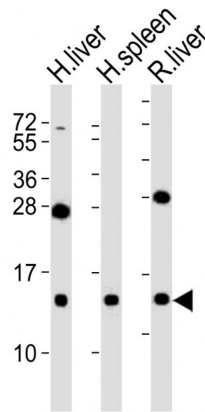
Provided below are standard protocols that you may find useful for product applications.

- [Western Blot](#)
- [Blocking Peptides](#)
- [Dot Blot](#)
- [Immunohistochemistry](#)
- [Immunofluorescence](#)
- [Immunoprecipitation](#)
- [Flow Cytometry](#)
- [Cell Culture](#)

CXCL11 Antibody - Images



Western blot analysis of lysate from rat liver tissue lysate, using CXCL11 Antibody(Cat. #AP21132a). AP21132a was diluted at 1:1000. A goat anti-rabbit IgG H&L(HRP) at 1:10000 dilution was used as the secondary antibody. Lysate at 20ug.



All lanes : Anti-CXCL11 Antibody at 1:2000 dilution Lane 1: human liver lysates Lane 2: human spleen lysates Lane 3: rat liver lysates Lysates/proteins at 20 µg per lane. Secondary Goat Anti-Rabbit IgG, (H+L), Peroxidase conjugated at 1/10000 dilution Predicted band size : 10 kDa Blocking/Dilution buffer: 5% NFD/MTBST.

CXCL11 Antibody - Background

Chemotactic for interleukin-activated T-cells but not unstimulated T-cells, neutrophils or monocytes. Induces calcium release in activated T-cells. Binds to CXCR3. May play an important role in CNS diseases which involve T-cell recruitment. May play a role in skin immune responses.

CXCL11 Antibody - References

- Rani M.R.S.,et al.J. Biol. Chem. 271:22878-22884(1996).
- Jacobs K.A.,et al.Gene 198:289-296(1997).
- Cole K.E.,et al.J. Exp. Med. 187:2009-2021(1998).
- Tensen C.P.,et al.J. Invest. Dermatol. 112:716-722(1999).
- Laich A.M.,et al.J. Interferon Cytokine Res. 19:505-513(1999).