

HS6ST2 Antibody (C-term)
Purified Rabbit Polyclonal Antibody (Pab)
Catalog # AP21139a

Specification

HS6ST2 Antibody (C-term) - Product Information

Application	WB,E
Primary Accession	Q96MM7
Reactivity	Human
Host	Rabbit
Clonality	polyclonal
Isotype	Rabbit IgG
Calculated MW	69130

HS6ST2 Antibody (C-term) - Additional Information

Gene ID 90161

Other Names

Heparan-sulfate 6-O-sulfotransferase 2, HS6ST-2, 282-, HS6ST2

Target/Specificity

This HS6ST2 antibody is generated from a rabbit immunized with a KLH conjugated synthetic peptide between 497-530 amino acids from the C-terminal region of human HS6ST2.

Dilution

WB~~1:1000

E~~Use at an assay dependent concentration.

Format

Purified polyclonal antibody supplied in PBS with 0.09% (W/V) sodium azide. This antibody is purified through a protein A column, followed by peptide affinity purification.

Storage

Maintain refrigerated at 2-8°C for up to 2 weeks. For long term storage store at -20°C in small aliquots to prevent freeze-thaw cycles.

Precautions

HS6ST2 Antibody (C-term) is for research use only and not for use in diagnostic or therapeutic procedures.

HS6ST2 Antibody (C-term) - Protein Information

Name HS6ST2 ([HGNC:19133](#))

Function 6-O-sulfation enzyme which catalyzes the transfer of sulfate from 3'-phosphoadenosine 5'-phosphosulfate (PAPS) to position 6 of the N-sulfoglucosamine residue (GlcNS) of heparan sulfate.

Cellular Location

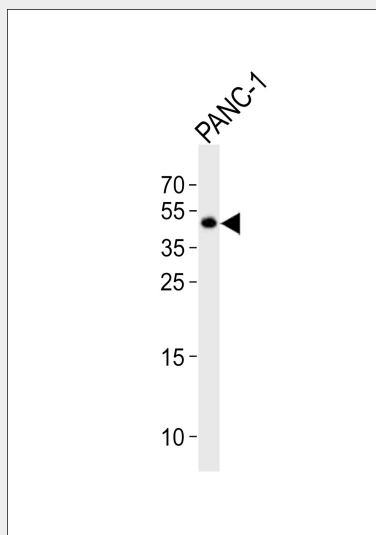
Membrane; Single-pass type II membrane protein

HS6ST2 Antibody (C-term) - Protocols

Provided below are standard protocols that you may find useful for product applications.

- [Western Blot](#)
- [Blocking Peptides](#)
- [Dot Blot](#)
- [Immunohistochemistry](#)
- [Immunofluorescence](#)
- [Immunoprecipitation](#)
- [Flow Cytometry](#)
- [Cell Culture](#)

HS6ST2 Antibody (C-term) - Images



Western blot analysis of lysate from PANC-1 cell line, using HS6ST2 Antibody (C-term)(Cat. #AP21139a). AP21139a was diluted at 1:1000. A goat anti-rabbit IgG H&L(HRP) at 1:10000 dilution was used as the secondary antibody. Lysate at 20ug.

HS6ST2 Antibody (C-term) - Background

6-O-sulfation enzyme which catalyzes the transfer of sulfate from 3'-phosphoadenosine 5'-phosphosulfate (PAPS) to position 6 of the N-sulfoglucosamine residue (GlcNS) of heparan sulfate.

HS6ST2 Antibody (C-term) - References

- Habuchi H., et al. *Biochem. J.* 371:131-142(2003).
Ota T., et al. *Nat. Genet.* 36:40-45(2004).
Ross M.T., et al. *Nature* 434:325-337(2005).
Otsuki T., et al. *DNA Res.* 12:117-126(2005).
Bechtel S., et al. *BMC Genomics* 8:399-399(2007).