

Zebrafish mtmr14 Antibody (C-Term)
Purified Rabbit Polyclonal Antibody (Pab)
Catalog # AP21142a**Specification**

Zebrafish mtmr14 Antibody (C-Term) - Product Information

| | |
|-------------------|------------------------|
| Application | WB,E |
| Primary Accession | E7F0C5 |
| Reactivity | Zebrafish |
| Host | Rabbit |
| Clonality | polyclonal |
| Isotype | Rabbit IgG |
| Antigen Region | 614-647 |

Zebrafish mtmr14 Antibody (C-Term) - Additional Information**Gene ID** 323929**Target/Specificity**

This Zebrafish mtmr14 antibody is generated from a rabbit immunized with a KLH conjugated synthetic peptide between 614-647 amino acids from zebrafish mtmr14.

Dilution

WB~~1:1000

E~~Use at an assay dependent concentration.

Format

Purified polyclonal antibody supplied in PBS with 0.09% (W/V) sodium azide. This antibody is purified through a protein A column, followed by peptide affinity purification.

Storage

Maintain refrigerated at 2-8°C for up to 2 weeks. For long term storage store at -20°C in small aliquots to prevent freeze-thaw cycles.

Precautions

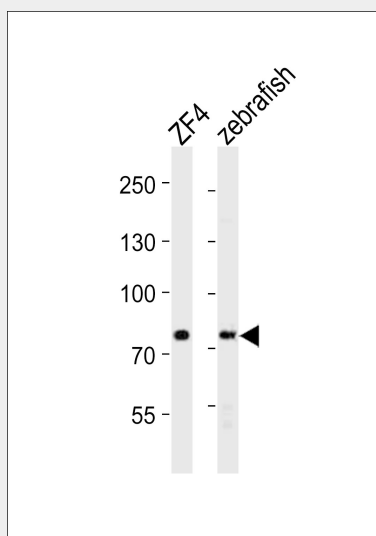
Zebrafish mtmr14 Antibody (C-Term) is for research use only and not for use in diagnostic or therapeutic procedures.

Zebrafish mtmr14 Antibody (C-Term) - Protein Information**Name** E7F0C5**Zebrafish mtmr14 Antibody (C-Term) - Protocols**

Provided below are standard protocols that you may find useful for product applications.

- [Western Blot](#)
- [Blocking Peptides](#)
- [Dot Blot](#)
- [Immunohistochemistry](#)
- [Immunofluorescence](#)
- [Immunoprecipitation](#)
- [Flow Cytometry](#)
- [Cell Culture](#)

Zebrafish mtmr14 Antibody (C-Term) - Images



Western blot analysis of lysates from zebrafish ZF4 cell line, zebrafish tissue lysate (from left to right), using Zebrafish mtmr14 Antibody (C-Term) (Cat. #AP21142a). AP21142a was diluted at 1:1000 at each lane. A goat anti-rabbit IgG H&L (HRP) at 1:10000 dilution was used as the secondary antibody. Lysates at 20ug per lane.