

Mouse Cldn6 Antibody (C-term)
Purified Rabbit Polyclonal Antibody (Pab)
Catalog # AP21145a**Specification**

Mouse Cldn6 Antibody (C-term) - Product Information

Application	WB, FC,E
Primary Accession	Q9Z262
Reactivity	Mouse
Host	Rabbit
Clonality	polyclonal
Isotype	Rabbit IgG
Antigen Region	186-229

Mouse Cldn6 Antibody (C-term) - Additional Information**Gene ID** 54419**Other Names**

Claudin-6, Skullin, Cldn6

Target/Specificity

This Mouse Cldn6 antibody is generated from a rabbit immunized with a KLH conjugated synthetic peptide between 186-229 amino acids from the C-terminal region of mouse Cldn6.

Dilution

WB~~1:1000

FC~~1:25

E~~Use at an assay dependent concentration.

Format

Purified polyclonal antibody supplied in PBS with 0.09% (W/V) sodium azide. This antibody is purified through a protein A column, followed by peptide affinity purification.

Storage

Maintain refrigerated at 2-8°C for up to 2 weeks. For long term storage store at -20°C in small aliquots to prevent freeze-thaw cycles.

Precautions

Mouse Cldn6 Antibody (C-term) is for research use only and not for use in diagnostic or therapeutic procedures.

Mouse Cldn6 Antibody (C-term) - Protein Information**Name** Cldn6

Function Plays a major role in tight junction-specific obliteration of the intercellular space, through calcium-independent cell-adhesion activity.

Cellular Location

Cell junction, tight junction. Cell membrane; Multi-pass membrane protein

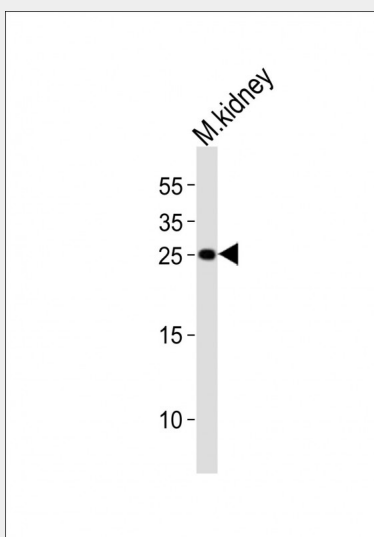
Tissue Location

Expressed mostly in embryonic tissues.

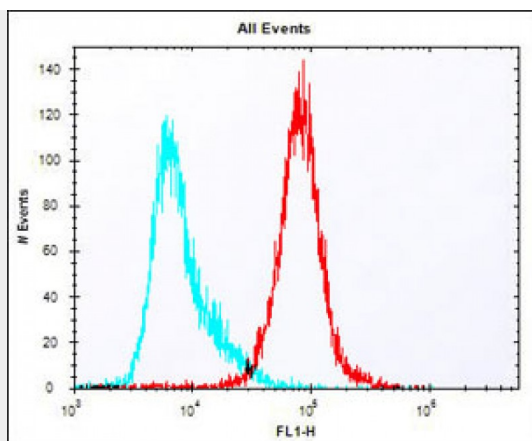
Mouse Cldn6 Antibody (C-term) - Protocols

Provided below are standard protocols that you may find useful for product applications.

- [Western Blot](#)
- [Blocking Peptides](#)
- [Dot Blot](#)
- [Immunohistochemistry](#)
- [Immunofluorescence](#)
- [Immunoprecipitation](#)
- [Flow Cytometry](#)
- [Cell Culture](#)

Mouse Cldn6 Antibody (C-term) - Images

Western blot analysis of lysate from mouse kidney tissue lysate, using Cldn6 Antibody (C-term)(Cat. #AP21145a). AP21145a was diluted at 1:1000. A goat anti-rabbit IgG H&L(HRP) at 1:10000 dilution was used as the secondary antibody. Lysate at 20ug.



Overlay histogram showing colon26 cells stained with AP21145a (red line). The cells were fixed with 2% paraformaldehyde (10 min) and then permeabilized with 90% methanol for 10 min. The cells were then incubated in 2% bovine serum albumin to block non-specific protein-protein interactions followed by the antibody (AP21145a, 1:25 dilution) for 60 min at 37°C. The secondary antibody used was Alexa Fluor® 488 goat anti-rabbit IgG (H+L) (1583138) at 1/400 dilution for 40 min at 37°C. Isotype control antibody (blue line) was rabbit IgG1 (1µg/1x10⁶ cells) used under the same conditions. Acquisition of >10,000 events was performed.

Mouse Cldn6 Antibody (C-term) - Background

Plays a major role in tight junction-specific obliteration of the intercellular space, through calcium-independent cell-adhesion activity (By similarity).

Mouse Cldn6 Antibody (C-term) - References

Morita K., et al. Proc. Natl. Acad. Sci. U.S.A. 96:511-516(1999).
Troy T., et al. Submitted (FEB-1999) to the EMBL/GenBank/DDBJ databases.
Carninci P., et al. Science 309:1559-1563(2005).
Itoh M., et al. J. Cell Biol. 147:1351-1363(1999).