

POC1A Antibody (C-term)
Purified Rabbit Polyclonal Antibody (Pab)
Catalog # AP21149a

Specification

POC1A Antibody (C-term) - Product Information

Application	WB,E
Primary Accession	Q8NBT0
Reactivity	Human
Host	Rabbit
Clonality	polyclonal
Isotype	Rabbit IgG
Calculated MW	45009

POC1A Antibody (C-term) - Additional Information

Gene ID 25886

Other Names

POC1 centriolar protein homolog A, Pix2, Proteome of centriole protein 1A, WD repeat-containing protein 51A, POC1A, WDR51A

Target/Specificity

This POC1A antibody is generated from a rabbit immunized with a KLH conjugated synthetic peptide between 326-360 amino acids from the C-terminal region of human POC1A.

Dilution

WB~~1:1000-1:4000

E~~Use at an assay dependent concentration.

Format

Purified polyclonal antibody supplied in PBS with 0.09% (W/V) sodium azide. This antibody is purified through a protein A column, followed by peptide affinity purification.

Storage

Maintain refrigerated at 2-8°C for up to 2 weeks. For long term storage store at -20°C in small aliquots to prevent freeze-thaw cycles.

Precautions

POC1A Antibody (C-term) is for research use only and not for use in diagnostic or therapeutic procedures.

POC1A Antibody (C-term) - Protein Information

Name POC1A

Synonyms WDR51A

Function Plays an important role in centriole assembly and/or stability and ciliogenesis. Involved in early steps of centriole duplication, as well as in the later steps of centriole length control. Acts in concert with POC1B to ensure centriole integrity and proper mitotic spindle formation.

Cellular Location

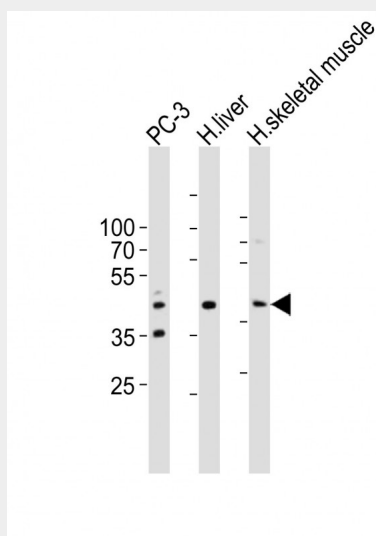
Cytoplasm, cytoskeleton, microtubule organizing center, centrosome. Cytoplasm, cytoskeleton, microtubule organizing center, centrosome, centriole Cytoplasm, cytoskeleton, cilium basal body. Cytoplasm, cytoskeleton, spindle pole. Note=Component of both mother and daughter centrioles

POC1A Antibody (C-term) - Protocols

Provided below are standard protocols that you may find useful for product applications.

- [Western Blot](#)
- [Blocking Peptides](#)
- [Dot Blot](#)
- [Immunohistochemistry](#)
- [Immunofluorescence](#)
- [Immunoprecipitation](#)
- [Flow Cytometry](#)
- [Cell Culture](#)

POC1A Antibody (C-term) - Images



Western blot analysis of lysates from PC-3 cell line, human liver, human skeletal muscle tissue lysate(from left to right), using POC1A Antibody (C-term)(Cat. #AP21149a). A goat anti-rabbit IgG H&L(HRP) at 1:10000 dilution was used as the secondary antibody. Lysates at 20ug per lane.

POC1A Antibody (C-term) - Background

Plays an important role in centriole assembly and/or stability and ciliogenesis. Involved in early steps of centriole duplication, as well as in the later steps of centriole length control. Acts in concert with POC1B to ensure centriole integrity and proper mitotic spindle formation.

POC1A Antibody (C-term) - References

Ota T.,et al.Nat. Genet. 36:40-45(2004).

Muzny D.M.,et al.Nature 440:1194-1198(2006).
Bechtel S.,et al.BMC Genomics 8:399-399(2007).
Hames R.S.,et al.Exp. Cell Res. 314:574-589(2008).
Pearson C.G.,et al.J. Cell Biol. 187:905-920(2009).