

ACAP2 Antibody (C-term)
Purified Rabbit Polyclonal Antibody (Pab)
Catalog # AP21151a

Specification

ACAP2 Antibody (C-term) - Product Information

Application	WB,E
Primary Accession	Q15057
Reactivity	Human, Rat
Host	Rabbit
Clonality	polyclonal
Isotype	Rabbit IgG
Calculated MW	88029

ACAP2 Antibody (C-term) - Additional Information

Gene ID 23527

Other Names

Arf-GAP with coiled-coil, ANK repeat and PH domain-containing protein 2, Centaurin-beta-2, Cnt-b2, ACAP2, CENTB2, KIAA0041

Target/Specificity

This ACAP2 antibody is generated from a rabbit immunized with a KLH conjugated synthetic peptide between 764-798 amino acids from the C-terminal region of human ACAP2.

Dilution

WB~~1:1000-1:4000

E~~Use at an assay dependent concentration.

Format

Purified polyclonal antibody supplied in PBS with 0.09% (W/V) sodium azide. This antibody is purified through a protein A column, followed by peptide affinity purification.

Storage

Maintain refrigerated at 2-8°C for up to 2 weeks. For long term storage store at -20°C in small aliquots to prevent freeze-thaw cycles.

Precautions

ACAP2 Antibody (C-term) is for research use only and not for use in diagnostic or therapeutic procedures.

ACAP2 Antibody (C-term) - Protein Information

Name ACAP2

Synonyms CENTB2, KIAA0041

Function GTPase-activating protein (GAP) for ADP ribosylation factor 6 (ARF6). Doesn't show GAP activity for RAB35 (PubMed:[30905672](#)).

Cellular Location

Cell membrane. Endosome membrane; Peripheral membrane protein. Note=Colocalizes with RAB35 at the membrane protrusions of HEK293T cells.

Tissue Location

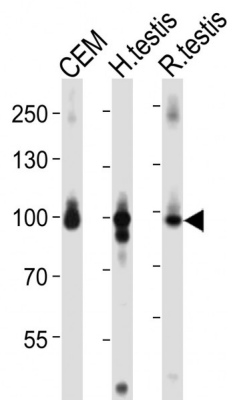
Widely expressed. Highest level in lung.

ACAP2 Antibody (C-term) - Protocols

Provided below are standard protocols that you may find useful for product applications.

- [Western Blot](#)
- [Blocking Peptides](#)
- [Dot Blot](#)
- [Immunohistochemistry](#)
- [Immunofluorescence](#)
- [Immunoprecipitation](#)
- [Flow Cytometry](#)
- [Cell Culture](#)

ACAP2 Antibody (C-term) - Images



Western blot analysis of lysates from CEM cell line, human testis, rat testis tissue lysate (from left to right), using ACAP2 Antibody (C-term)(Cat. #AP21151a). A goat anti-rabbit IgG H&L(HRP) at 1:10000 dilution was used as the secondary antibody. Lysates at 20ug per lane.

ACAP2 Antibody (C-term) - Background

GTPase-activating protein (GAP) for ADP ribosylation factor 6 (ARF6).

ACAP2 Antibody (C-term) - References

Jackson T.R.,et al.J. Cell Biol. 151:627-638(2000).
Nomura N.,et al.DNA Res. 1:223-229(1994).

Ohara O.,et al.Submitted (JAN-2003) to the EMBL/GenBank/DDBJ databases.
Ota T.,et al.Nat. Genet. 36:40-45(2004).
Mural R.J.,et al.Submitted (SEP-2005) to the EMBL/GenBank/DDBJ databases.