

(Mouse) Tal1 Antibody (Center)
Purified Rabbit Polyclonal Antibody (Pab)
Catalog # AP21155a

Specification

(Mouse) Tal1 Antibody (Center) - Product Information

Application	WB,E
Primary Accession	P22091
Reactivity	Human
Host	Rabbit
Clonality	polyclonal
Isotype	Rabbit IgG
Calculated MW	34279

(Mouse) Tal1 Antibody (Center) - Additional Information

Gene ID 21349

Other Names

T-cell acute lymphocytic leukemia protein 1 homolog, TAL-1, Stem cell protein, Tal1, Scl, Tal-1

Target/Specificity

This mouse Tal1 antibody is generated from a rabbit immunized with a KLH conjugated synthetic peptide between 154-188 amino acids from the Central region of mouse Tal1.

Dilution

WB~~1:1000

E~~Use at an assay dependent concentration.

Format

Purified polyclonal antibody supplied in PBS with 0.09% (W/V) sodium azide. This antibody is purified through a protein A column, followed by peptide affinity purification.

Storage

Maintain refrigerated at 2-8°C for up to 2 weeks. For long term storage store at -20°C in small aliquots to prevent freeze-thaw cycles.

Precautions

(Mouse) Tal1 Antibody (Center) is for research use only and not for use in diagnostic or therapeutic procedures.

(Mouse) Tal1 Antibody (Center) - Protein Information

Name Tal1

Synonyms Scl, Tal-1

Function Implicated in the genesis of hemopoietic malignancies. It may play an important role in

hemopoietic differentiation. Serves as a positive regulator of erythroid differentiation.

Cellular Location

Nucleus {ECO:0000255|PROSITE-ProRule:PRU00981, ECO:0000269|PubMed:9391090}

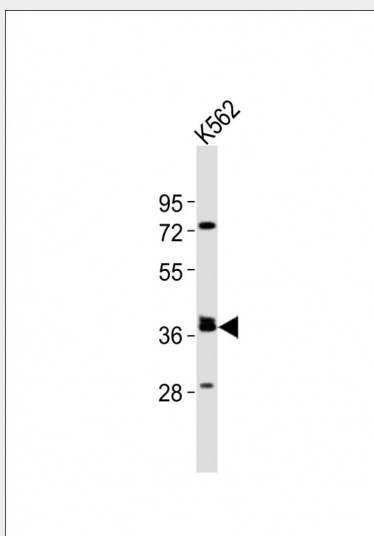
Tissue Location

Erythroid and myeloid cells.

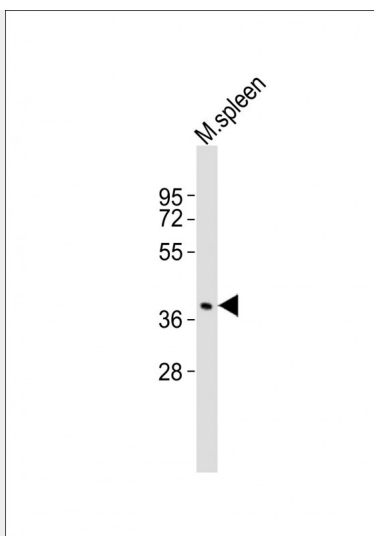
(Mouse) Tal1 Antibody (Center) - Protocols

Provided below are standard protocols that you may find useful for product applications.

- [Western Blot](#)
- [Blocking Peptides](#)
- [Dot Blot](#)
- [Immunohistochemistry](#)
- [Immunofluorescence](#)
- [Immunoprecipitation](#)
- [Flow Cytometry](#)
- [Cell Culture](#)

(Mouse) Tal1 Antibody (Center) - Images

Anti-(Mouse) Tal1 Antibody (Center) at 1:2000 dilution + K562 whole cell lysates Lysates/proteins at 20 µg per lane. Secondary Goat Anti-Rabbit IgG, (H+L), Peroxidase conjugated at 1/10000 dilution Predicted band size : 34 kDa Blocking/Dilution buffer: 5% NFDM/TBST.



Anti-(Mouse) Tal1 Antibody (Center) at 1:1000 dilution + mouse spleen lysates Lysates/proteins at 20 µg per lane. Secondary Goat Anti-Rabbit IgG, (H+L), Peroxidase conjugated at 1/10000 dilution Predicted band size : 34kDa Blocking/Dilution buffer: 5% NFDM/TBST.

(Mouse) Tal1 Antibody (Center) - Background

Implicated in the genesis of hemopoietic malignancies. It may play an important role in hemopoietic differentiation. Serves as a positive regulator of erythroid differentiation.

(Mouse) Tal1 Antibody (Center) - References

Begley C.G.,et al.Proc. Natl. Acad. Sci. U.S.A. 88:869-873(1991).
Visvader J.E.,et al.Proc. Natl. Acad. Sci. U.S.A. 94:13707-13712(1997).
Tang T.,et al.J. Biol. Chem. 277:18365-18372(2002).
Goardon N.,et al.EMBO J. 25:357-366(2006).