

**KDM6B Antibody (Center)**  
**Purified Rabbit Polyclonal Antibody (Pab)**  
**Catalog # AP21160a****Specification**

---

**KDM6B Antibody (Center) - Product Information**

Application	WB,E
Primary Accession	<a href="#">O15054</a>
Reactivity	Mouse
Host	Rabbit
Clonality	polyclonal
Isotype	Rabbit IgG
Calculated MW	176632

**KDM6B Antibody (Center) - Additional Information****Gene ID** 23135**Other Names**

Lysine-specific demethylase 6B, 11411-, JmjC domain-containing protein 3, Jumonji domain-containing protein 3, Lysine demethylase 6B, KDM6B, JMJD3, KIAA0346

**Target/Specificity**

This KDM6B antibody is generated from a rabbit immunized with a KLH conjugated synthetic peptide between 879-912 amino acids from the Central region of human KDM6B.

**Dilution**

WB~~1:2000

E~~Use at an assay dependent concentration.

**Format**

Purified polyclonal antibody supplied in PBS with 0.09% (W/V) sodium azide. This antibody is purified through a protein A column, followed by peptide affinity purification.

**Storage**

Maintain refrigerated at 2-8°C for up to 2 weeks. For long term storage store at -20°C in small aliquots to prevent freeze-thaw cycles.

**Precautions**

KDM6B Antibody (Center) is for research use only and not for use in diagnostic or therapeutic procedures.

**KDM6B Antibody (Center) - Protein Information****Name** KDM6B**Synonyms** JMJD3, KIAA0346

**Function** Histone demethylase that specifically demethylates 'Lys-27' of histone H3, thereby playing a central role in histone code (PubMed:[17713478](#), PubMed:[17825402](#), PubMed:[17851529](#), PubMed:[18003914](#)). Demethylates trimethylated and dimethylated H3 'Lys-27' (PubMed:[17713478](#), PubMed:[17825402](#), PubMed:[17851529](#), PubMed:[18003914](#)). Plays a central role in regulation of posterior development, by regulating HOX gene expression (PubMed:[17851529](#)). Involved in inflammatory response by participating in macrophage differentiation in case of inflammation by regulating gene expression and macrophage differentiation (PubMed:[17825402](#)). Plays a demethylase-independent role in chromatin remodeling to regulate T-box family member-dependent gene expression by acting as a link between T-box factors and the SMARCA4- containing SWI/SNF remodeling complex (By similarity).

#### Cellular Location

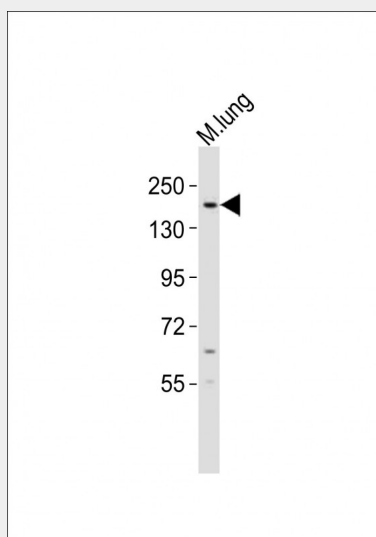
Nucleus.

#### KDM6B Antibody (Center) - Protocols

Provided below are standard protocols that you may find useful for product applications.

- [Western Blot](#)
- [Blocking Peptides](#)
- [Dot Blot](#)
- [Immunohistochemistry](#)
- [Immunofluorescence](#)
- [Immunoprecipitation](#)
- [Flow Cytometry](#)
- [Cell Culture](#)

#### KDM6B Antibody (Center) - Images



Anti-KDM6B Antibody (Center) at 1:2000 dilution + mouse lung lysates Lysates/proteins at 20 µg per lane. Secondary Goat Anti-Rabbit IgG, (H+L), Peroxidase conjugated at 1/10000 dilution Predicted band size : 177 kDa Blocking/Dilution buffer: 5% NFDM/TBST.

#### KDM6B Antibody (Center) - Background

Histone demethylase that specifically demethylates 'Lys- 27' of histone H3, thereby playing a central role in histone code. Demethylates trimethylated and dimethylated H3 'Lys-27'. Plays a

central role in regulation of posterior development, by regulating HOX gene expression. Involved in inflammatory response by participating in macrophage differentiation in case of inflammation by regulating gene expression and macrophage differentiation.

#### **KDM6B Antibody (Center) - References**

Nagase T.,et al.DNA Res. 4:141-150(1997).  
Nakajima D.,et al.DNA Res. 9:99-106(2002).  
Zody M.C.,et al.Nature 440:1045-1049(2006).  
Hu L.Y.,et al.Gene Expr. 13:179-189(2006).  
De Santa F.,et al.Cell 130:1083-1094(2007).