

**(DANRE) cisd2 Antibody (C-Term)**  
**Purified Rabbit Polyclonal Antibody (Pab)**  
**Catalog # AP21176a**

**Specification**

---

**(DANRE) cisd2 Antibody (C-Term) - Product Information**

Application	WB,E
Primary Accession	<a href="#">Q7T326</a>
Reactivity	Mouse
Host	Rabbit
Clonality	polyclonal
Isotype	Rabbit IgG
Calculated MW	15485

**(DANRE) cisd2 Antibody (C-Term) - Additional Information**

**Gene ID** 393354

**Other Names**

CDGSH iron-sulfur domain-containing protein 2, cisd2

**Target/Specificity**

This DANRE cisd2 antibody is generated from a rabbit immunized with a KLH conjugated synthetic peptide between 110-144 amino acids from the human region of DANRE cisd2.

**Dilution**

WB~~1:2000

E~~Use at an assay dependent concentration.

**Format**

Purified polyclonal antibody supplied in PBS with 0.09% (W/V) sodium azide. This antibody is purified through a protein A column, followed by peptide affinity purification.

**Storage**

Maintain refrigerated at 2-8°C for up to 2 weeks. For long term storage store at -20°C in small aliquots to prevent freeze-thaw cycles.

**Precautions**

(DANRE) cisd2 Antibody (C-Term) is for research use only and not for use in diagnostic or therapeutic procedures.

**(DANRE) cisd2 Antibody (C-Term) - Protein Information**

**Name** cisd2

**Function** Regulator of autophagy that contributes to antagonize becn1- mediated cellular autophagy at the endoplasmic reticulum. Participates in the interaction of bcl2 with becn1 and is required for bcl2-mediated depression of endoplasmic reticulum Ca(2+) stores during autophagy

(By similarity).

#### Cellular Location

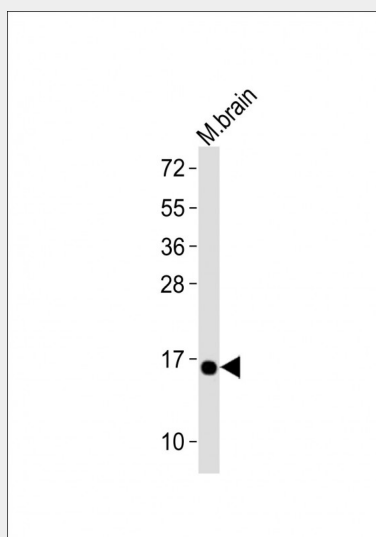
Endoplasmic reticulum membrane; Single-pass membrane protein. Mitochondrion outer membrane; Single-pass membrane protein

#### (DANRE) cisd2 Antibody (C-Term) - Protocols

Provided below are standard protocols that you may find useful for product applications.

- [Western Blot](#)
- [Blocking Peptides](#)
- [Dot Blot](#)
- [Immunohistochemistry](#)
- [Immunofluorescence](#)
- [Immunoprecipitation](#)
- [Flow Cytometry](#)
- [Cell Culture](#)

#### (DANRE) cisd2 Antibody (C-Term) - Images



Anti-(DANRE) cisd2 Antibody (C-Term) at 1:2000 dilution + mouse brain lysates Lysates/proteins at 20 µg per lane. Secondary Goat Anti-Rabbit IgG, (H+L), Peroxidase conjugated at 1/10000 dilution Predicted band size : 15 kDa Blocking/Dilution buffer: 5% NFDm/TBST.

#### (DANRE) cisd2 Antibody (C-Term) - Background

Regulator of autophagy that contributes to antagonize becn1-mediated cellular autophagy at the endoplasmic reticulum. Participates in the interaction of bcl2 with becn1 and is required for bcl2-mediated depression of endoplasmic reticulum Ca(2+) stores during autophagy (By similarity).

#### (DANRE) cisd2 Antibody (C-Term) - References

Song H.-D., et al. Proc. Natl. Acad. Sci. U.S.A. 101:16240-16245(2004).  
Howe K., et al. Nature 496:498-503(2013).