

(DANRE) opn1sw1 Antibody (N-Term)
Purified Rabbit Polyclonal Antibody (Pab)
Catalog # AP21179a

Specification

(DANRE) opn1sw1 Antibody (N-Term) - Product Information

Application	WB,E
Primary Accession	O9W6A9
Reactivity	Zebrafish
Host	Rabbit
Clonality	polyclonal
Isotype	Rabbit IgG
Antigen Region	15-47

(DANRE) opn1sw1 Antibody (N-Term) - Additional Information

Gene ID 30582

Other Names

Opsin-1, short-wave-sensitive 1, Opsin SWS-1, Ultraviolet cone photoreceptor pigment, Ultraviolet-sensitive opsin, opn1sw1, opn1sw2, sws1, uvops

Target/Specificity

This DANRE opn1sw1 antibody is generated from a rabbit immunized with a KLH conjugated synthetic peptide between 15-47 amino acids of DANRE opn1sw1.

Dilution

WB~~1:2000
E~~Use at an assay dependent concentration.

Format

Purified polyclonal antibody supplied in PBS with 0.09% (W/V) sodium azide. This antibody is purified through a protein A column, followed by peptide affinity purification.

Storage

Maintain refrigerated at 2-8°C for up to 2 weeks. For long term storage store at -20°C in small aliquots to prevent freeze-thaw cycles.

Precautions

(DANRE) opn1sw1 Antibody (N-Term) is for research use only and not for use in diagnostic or therapeutic procedures.

(DANRE) opn1sw1 Antibody (N-Term) - Protein Information

Name opn1sw1

Synonyms opn1sw2, sws1, uvops

Function Visual pigments are the light-absorbing molecules that mediate vision. They consist of an apoprotein, opsin, covalently linked to cis-retinal.

Cellular Location

Membrane; Multi-pass membrane protein.

Tissue Location

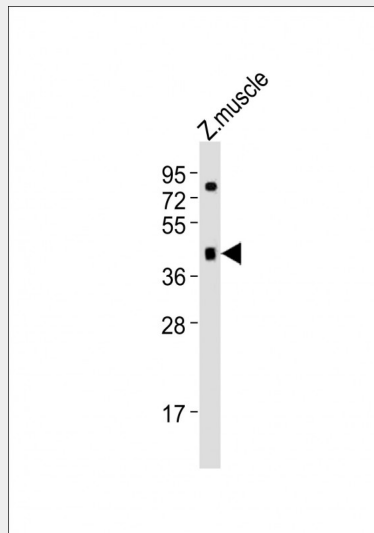
Retinal short single cones, outer and inner segments.

(DANRE) opn1sw1 Antibody (N-Term) - Protocols

Provided below are standard protocols that you may find useful for product applications.

- [Western Blot](#)
- [Blocking Peptides](#)
- [Dot Blot](#)
- [Immunohistochemistry](#)
- [Immunofluorescence](#)
- [Immunoprecipitation](#)
- [Flow Cytometry](#)
- [Cell Culture](#)

(DANRE) opn1sw1 Antibody (N-Term) - Images



Anti-(DANRE) opn1sw1 Antibody (N-Term) at 1:2000 dilution + zebrafish muscle lysates Lysates/proteins at 20 µg per lane. Secondary Goat Anti-Rabbit IgG, (H+L), Peroxidase conjugated at 1/10000 dilution Predicted band size : 37 kDa Blocking/Dilution buffer: 5% NFDM/TBST.

(DANRE) opn1sw1 Antibody (N-Term) - Background

Visual pigments are the light-absorbing molecules that mediate vision. They consist of an apoprotein, opsin, covalently linked to cis-retinal.

(DANRE) opn1sw1 Antibody (N-Term) - References

Vihtelic T.S.,et al.Vis. Neurosci. 16:571-585(1999).
Chinen A.,et al.Genetics 163:663-675(2003).

