

CNR2 Antibody (N-term)
Purified Rabbit Polyclonal Antibody (Pab)
Catalog # AP21180a**Specification**

CNR2 Antibody (N-term) - Product Information

Application	WB,E
Primary Accession	P34972
Reactivity	Human
Host	Rabbit
Clonality	polyclonal
Isotype	Rabbit IgG
Calculated MW	39681

CNR2 Antibody (N-term) - Additional Information**Gene ID** 1269**Other Names**

Cannabinoid receptor 2, CB-2, CB2, hCB2, CX5, CNR2, CB2A, CB2B

Target/Specificity

This CNR2 antibody is generated from a rabbit immunized with a KLH conjugated synthetic peptide between 18-53 amino acids from the N-terminal region of human CNR2.

Dilution

WB~~1:2000

E~~Use at an assay dependent concentration.

Format

Purified polyclonal antibody supplied in PBS with 0.09% (W/V) sodium azide. This antibody is purified through a protein A column, followed by peptide affinity purification.

Storage

Maintain refrigerated at 2-8°C for up to 2 weeks. For long term storage store at -20°C in small aliquots to prevent freeze-thaw cycles.

Precautions

CNR2 Antibody (N-term) is for research use only and not for use in diagnostic or therapeutic procedures.

CNR2 Antibody (N-term) - Protein Information**Name** CNR2**Synonyms** CB2A, CB2B**Function** Heterotrimeric G protein-coupled receptor for endocannabinoid 2-arachidonoylglycerol

mediating inhibition of adenylate cyclase. May function in inflammatory response, nociceptive transmission and bone homeostasis.

Cellular Location

Cell membrane; Multi-pass membrane protein. Cell projection, dendrite. Perikaryon Note=Localizes to apical dendrite of pyramidal neurons.

Tissue Location

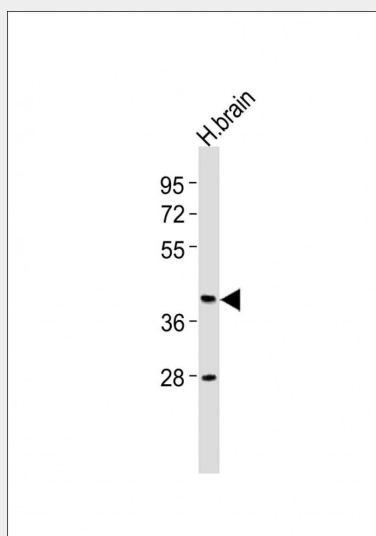
Preferentially expressed in cells of the immune system with higher expression in B-cells and NK cells (at protein level). Expressed in skin in suprabasal layers and hair follicles (at protein level). Highly expressed in tonsil and to a lower extent in spleen, peripheral blood mononuclear cells, and thymus. PubMed:14657172 could not detect expression in normal brain. Expressed in brain by perivascular microglial cells and dorsal root ganglion sensory neurons (at protein level). Two isoforms are produced by alternative promoter usage and differ only in the 5' UTR: isoform CB2A is observed predominantly in testis with some expression in brain, while isoform CB2B is predominant in spleen and leukocytes

CNR2 Antibody (N-term) - Protocols

Provided below are standard protocols that you may find useful for product applications.

- [Western Blot](#)
- [Blocking Peptides](#)
- [Dot Blot](#)
- [Immunohistochemistry](#)
- [Immunofluorescence](#)
- [Immunoprecipitation](#)
- [Flow Cytometry](#)
- [Cell Culture](#)

CNR2 Antibody (N-term) - Images



Anti-CNR2 Antibody (N-term) at 1:2000 dilution + human brain lysates Lysates/proteins at 20 µg per lane. Secondary Goat Anti-Rabbit IgG, (H+L), Peroxidase conjugated at 1/10000 dilution Predicted band size : 40 kDa Blocking/Dilution buffer: 5% NFDm/TBST.

CNR2 Antibody (N-term) - Background

Heterotrimeric G protein-coupled receptor for endocannabinoid 2-arachidonoylglycerol mediating inhibition of adenylate cyclase. May function in inflammatory response, nociceptive transmission and bone homeostasis.

CNR2 Antibody (N-term) - References

Munro S.,et al.Nature 365:61-65(1993).

Liu Q.-R.,et al.Genes Brain Behav. 8:519-530(2009).

Bruess M.,et al.Submitted (FEB-2003) to the EMBL/GenBank/DDBJ databases.

Warren C.N.,et al.Submitted (FEB-2003) to the EMBL/GenBank/DDBJ databases.

Saravanan T.,et al.Submitted (NOV-2005) to the EMBL/GenBank/DDBJ databases.