

**TSHR Antibody (Center)**  
**Purified Rabbit Polyclonal Antibody (Pab)**  
**Catalog # AP21182c****Specification**

---

**TSHR Antibody (Center) - Product Information**

Application	WB,E
Primary Accession	<a href="#">P16473</a>
Reactivity	Mouse
Host	Rabbit
Clonality	polyclonal
Isotype	Rabbit IgG
Calculated MW	86844

**TSHR Antibody (Center) - Additional Information****Gene ID** 7253**Other Names**

Thyrotropin receptor, Thyroid-stimulating hormone receptor, TSH-R, TSHR, LGR3

**Target/Specificity**

This TSHR antibody is generated from a rabbit immunized with a KLH conjugated synthetic peptide between 217-252 amino acids from the Central region of human TSHR.

**Dilution**

WB~~1:1000

E~~Use at an assay dependent concentration.

**Format**

Purified polyclonal antibody supplied in PBS with 0.09% (W/V) sodium azide. This antibody is purified through a protein A column, followed by peptide affinity purification.

**Storage**

Maintain refrigerated at 2-8°C for up to 2 weeks. For long term storage store at -20°C in small aliquots to prevent freeze-thaw cycles.

**Precautions**

TSHR Antibody (Center) is for research use only and not for use in diagnostic or therapeutic procedures.

**TSHR Antibody (Center) - Protein Information****Name** TSHR**Synonyms** LGR3**Function** Receptor for the thyroid-stimulating hormone (TSH) or thyrotropin (PubMed:[11847099](#),

PubMed:[12045258](#)). Also acts as a receptor for the heterodimeric glycoprotein hormone (GPHA2:GPHB5) or thyrostimulin (PubMed:[12045258](#)). The activity of this receptor is mediated by G proteins which activate adenylate cyclase (PubMed:[11847099](#)). Plays a central role in controlling thyroid cell metabolism (By similarity).

#### Cellular Location

Cell membrane; Multi-pass membrane protein. Basolateral cell membrane; Multi-pass membrane protein

#### Tissue Location

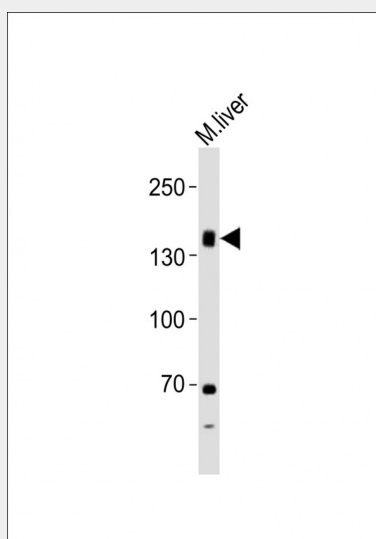
Expressed in thyroid cells (at protein level) (PubMed:11847099). Expressed in the thyroid (PubMed:2610690)

### TSHR Antibody (Center) - Protocols

Provided below are standard protocols that you may find useful for product applications.

- [Western Blot](#)
- [Blocking Peptides](#)
- [Dot Blot](#)
- [Immunohistochemistry](#)
- [Immunofluorescence](#)
- [Immunoprecipitation](#)
- [Flow Cytometry](#)
- [Cell Culture](#)

### TSHR Antibody (Center) - Images



Anti-TSHR Antibody (Center) at 1:1000 dilution + mouse liver lysates Lysates/proteins at 20 µg per lane. Secondary Goat Anti-Rabbit IgG, (H+L), Peroxidase conjugated at 1/10000 dilution Predicted band size : 87 kDa Blocking/Dilution buffer: 5% NFDm/TBST.

### TSHR Antibody (Center) - Background

Receptor for thyrothopin. Plays a central role in controlling thyroid cell metabolism. The activity of this receptor is mediated by G proteins which activate adenylate cyclase. Also acts as a receptor for thyrostimulin (GPA2+GPB5).

**TSHR Antibody (Center) - References**

Nagayama Y.,et al.Biochem. Biophys. Res. Commun. 165:1184-1190(1989).  
Libert F.,et al.Biochem. Biophys. Res. Commun. 165:1250-1255(1989).  
Misrahi M.,et al.Biochem. Biophys. Res. Commun. 166:394-403(1990).  
Frazier A.L.,et al.Mol. Endocrinol. 4:1264-1276(1990).  
Graves P.N.,et al.Biochem. Biophys. Res. Commun. 187:1135-1143(1992).