

UBE2L6 Antibody (C-term)
Purified Rabbit Polyclonal Antibody (Pab)
Catalog # AP2118B**Specification**

UBE2L6 Antibody (C-term) - Product Information

Application	IHC-P, WB,E
Primary Accession	O14933
Reactivity	Human
Host	Rabbit
Clonality	Polyclonal
Isotype	Rabbit IgG
Antigen Region	123-153

UBE2L6 Antibody (C-term) - Additional Information**Gene ID** 9246**Other Names**

Ubiquitin/ISG15-conjugating enzyme E2 L6, Retinoic acid-induced gene B protein, RIG-B, Ubch8, Ubiquitin carrier protein L6, Ubiquitin-protein ligase L6, UBE2L6, UBCH8

Target/Specificity

This UBE2L6 antibody is generated from rabbits immunized with a KLH conjugated synthetic peptide between 123-153 amino acids from the C-terminal region of human UBE2L6.

Dilution

IHC-P~~1:10~50

WB~~1:1000

E~~Use at an assay dependent concentration.

Format

Purified polyclonal antibody supplied in PBS with 0.09% (W/V) sodium azide. This antibody is prepared by Saturated Ammonium Sulfate (SAS) precipitation followed by dialysis against PBS.

Storage

Maintain refrigerated at 2-8°C for up to 2 weeks. For long term storage store at -20°C in small aliquots to prevent freeze-thaw cycles.

Precautions

UBE2L6 Antibody (C-term) is for research use only and not for use in diagnostic or therapeutic procedures.

UBE2L6 Antibody (C-term) - Protein Information**Name** UBE2L6**Synonyms** UBCH8

Function Catalyzes the covalent attachment of ubiquitin or ISG15 to other proteins. Functions in the E6/E6-AP-induced ubiquitination of p53/TP53. Promotes ubiquitination and subsequent proteasomal degradation of FLT3.

Tissue Location

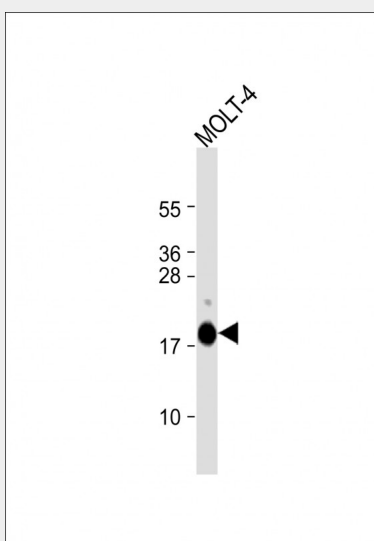
Present in natural killer cells (at protein level).

UBE2L6 Antibody (C-term) - Protocols

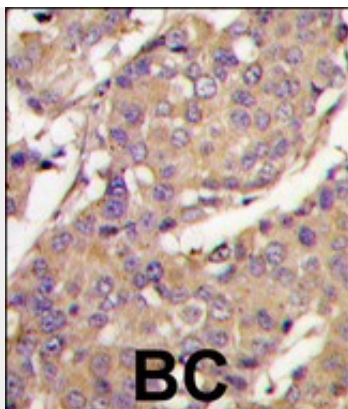
Provided below are standard protocols that you may find useful for product applications.

- [Western Blot](#)
- [Blocking Peptides](#)
- [Dot Blot](#)
- [Immunohistochemistry](#)
- [Immunofluorescence](#)
- [Immunoprecipitation](#)
- [Flow Cytometry](#)
- [Cell Culture](#)

UBE2L6 Antibody (C-term) - Images



Anti-UBE2L6 Antibody (K136) at 1:1000 dilution + MOLT-4 whole cell lysate Lysates/proteins at 20 µg per lane. Secondary Goat Anti-Rabbit IgG, (H+L), Peroxidase conjugated at 1/10000 dilution. Predicted band size : 18 kDa Blocking/Dilution buffer: 5% NFDm/TBST.



Formalin-fixed and paraffin-embedded breast carcinoma tissue reacted with UBE2L6 Antibody (C-term)(Cat.#AP2118b), which was peroxidase-conjugated to the secondary antibody, followed by DAB staining. This data demonstrates the use of this antibody for immunohistochemistry; clinical relevance has not been evaluated.

UBE2L6 Antibody (C-term) - Background

The modification of proteins with ubiquitin is an important cellular mechanism for targeting abnormal or short-lived proteins for degradation. Ubiquitination involves at least three classes of enzymes: ubiquitin-activating enzymes (E1s), ubiquitin-conjugating enzymes (E2s) and ubiquitin-protein ligases (E3s). UBE2L6 is a member of the E2 ubiquitin-conjugating enzyme family. This enzyme is demonstrated to function in the E6/E6-ap-induced ubiquitination of p53.

UBE2L6 Antibody (C-term) - References

Kumar, S., et al., J. Biol. Chem. 272(21):13548-13554 (1997). Ardley, H.C., et al., Cytogenet. Cell Genet. 89 (1-2), 137-140 (2000).

UBE2L6 Antibody (C-term) - Citations

- [STAT1 N-terminal domain discriminatively controls type I and type II IFN signaling](#)
- [Influenza B virus non-structural protein 1 counteracts ISG15 antiviral activity by sequestering ISGylated viral proteins.](#)
- [Differential regulation of PML-RAR \$\alpha\$ stability by the ubiquitin ligases SIAH1/SIAH2 and TRIAD1.](#)
- [Mechanism for ubiquitylation of the leukemia fusion proteins AML1-ETO and PML-RAR \$\alpha\$.](#)