

UBE2C Antibody (C-term)
Purified Rabbit Polyclonal Antibody (Pab)
Catalog # AP2119b**Specification**

UBE2C Antibody (C-term) - Product Information

Application	WB,E
Primary Accession	O00762
Other Accession	O9D1C1 , Q4R9D1 , Q32PA5
Reactivity	Human
Predicted	Bovine, Monkey, Mouse
Host	Rabbit
Clonality	Polyclonal
Isotype	Rabbit IgG
Antigen Region	142-172

UBE2C Antibody (C-term) - Additional Information**Gene ID** 11065**Other Names**

Ubiquitin-conjugating enzyme E2 C, UbcH10, Ubiquitin carrier protein C, Ubiquitin-protein ligase C, UBE2C, UBCH10

Target/Specificity

This UBE2C antibody is generated from rabbits immunized with a KLH conjugated synthetic peptide between 142-172 amino acids from the C-terminal region of human UBE2C.

Dilution

WB~~1:1000

Format

Purified polyclonal antibody supplied in PBS with 0.09% (W/V) sodium azide. This antibody is prepared by Saturated Ammonium Sulfate (SAS) precipitation followed by dialysis against PBS.

Storage

Maintain refrigerated at 2-8°C for up to 2 weeks. For long term storage store at -20°C in small aliquots to prevent freeze-thaw cycles.

Precautions

UBE2C Antibody (C-term) is for research use only and not for use in diagnostic or therapeutic procedures.

UBE2C Antibody (C-term) - Protein Information**Name** UBE2C**Synonyms** UBCH10

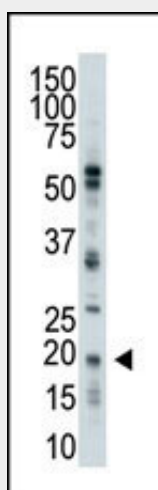
Function Accepts ubiquitin from the E1 complex and catalyzes its covalent attachment to other proteins. In vitro catalyzes 'Lys-11'- and 'Lys-48'-linked polyubiquitination. Acts as an essential factor of the anaphase promoting complex/cyclosome (APC/C), a cell cycle-regulated ubiquitin ligase that controls progression through mitosis. Acts by initiating 'Lys-11'-linked polyubiquitin chains on APC/C substrates, leading to the degradation of APC/C substrates by the proteasome and promoting mitotic exit.

UBE2C Antibody (C-term) - Protocols

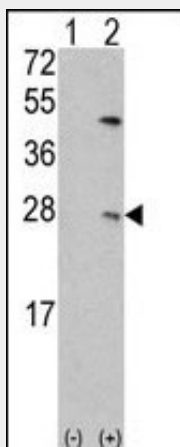
Provided below are standard protocols that you may find useful for product applications.

- [Western Blot](#)
- [Blocking Peptides](#)
- [Dot Blot](#)
- [Immunohistochemistry](#)
- [Immunofluorescence](#)
- [Immunoprecipitation](#)
- [Flow Cytometry](#)
- [Cell Culture](#)

UBE2C Antibody (C-term) - Images



The UBE2C Antibody (C-term) (Cat. #AP2119b) is used in Western blot to detect UBE2C in Jurkat cell lysate.



Western blot analysis of UBE2C(arrow) using rabbit polyclonal UBE2C Antibody (C-term) (Cat. #AP2119b). 293 cell lysates (2 ug/lane) either nontransfected (Lane 1) or transiently transfected with the UBE2C gene (Lane 2) (Origene Technologies).

UBE2C Antibody (C-term) - Background

The modification of proteins with ubiquitin is an important cellular mechanism for targeting abnormal or short-lived proteins for degradation. Ubiquitination involves at least three classes of enzymes: ubiquitin-activating enzymes, or E1s, ubiquitin-conjugating enzymes, or E2s, and ubiquitin-protein ligases, or E3s. UBE2C is a member of the E2 ubiquitin-conjugating enzyme family. This enzyme is required for the destruction of mitotic cyclins and for cell cycle progression.

UBE2C Antibody (C-term) - References

Okamoto, Y., et al., Cancer Res. 63(14):4167-4173 (2003).
Lin, Y., et al., J. Biol. Chem. 277(24):21913-21921 (2002).
Townsend, F.M., et al., Proc. Natl. Acad. Sci. U.S.A. 94(6):2362-2367 (1997).