

Med15 Antibody (C-term)
Purified Rabbit Polyclonal Antibody (Pab)
Catalog # AP21208b**Specification**

Med15 Antibody (C-term) - Product Information

Application	WB, IHC-P,E
Primary Accession	Q924H2
Other Accession	G3V684 , Q96RN5
Reactivity	Mouse, Rat
Predicted	Human
Host	Rabbit
Clonality	polyclonal
Isotype	Rabbit IgG

Med15 Antibody (C-term) - Additional Information**Gene ID** 94112**Other Names**

Mediator of RNA polymerase II transcription subunit 15, Mediator complex subunit 15, Positive cofactor 2 glutamine/Q-rich-associated protein, PC2 glutamine/Q-rich-associated protein, mPcqap, Med15, Pcqap

Target/Specificity

This Med15 antibody is generated from a rabbit immunized with a KLH conjugated synthetic peptide between 712-746 amino acids from the C-terminal region of mouse Med15.

Dilution

WB~~1:2000

IHC-P~~1:25

E~~Use at an assay dependent concentration.

Format

Purified polyclonal antibody supplied in PBS with 0.09% (W/V) sodium azide. This antibody is purified through a protein A column, followed by peptide affinity purification.

Storage

Maintain refrigerated at 2-8°C for up to 2 weeks. For long term storage store at -20°C in small aliquots to prevent freeze-thaw cycles.

Precautions

Med15 Antibody (C-term) is for research use only and not for use in diagnostic or therapeutic procedures.

Med15 Antibody (C-term) - Protein Information**Name** Med15

Synonyms Pcqap

Function Component of the Mediator complex, a coactivator involved in the regulated transcription of nearly all RNA polymerase II-dependent genes. Mediator functions as a bridge to convey information from gene-specific regulatory proteins to the basal RNA polymerase II transcription machinery. Mediator is recruited to promoters by direct interactions with regulatory proteins and serves as a scaffold for the assembly of a functional preinitiation complex with RNA polymerase II and the general transcription factors. Required for cholesterol-dependent gene regulation. Positively regulates the Nodal signaling pathway (By similarity).

Cellular Location

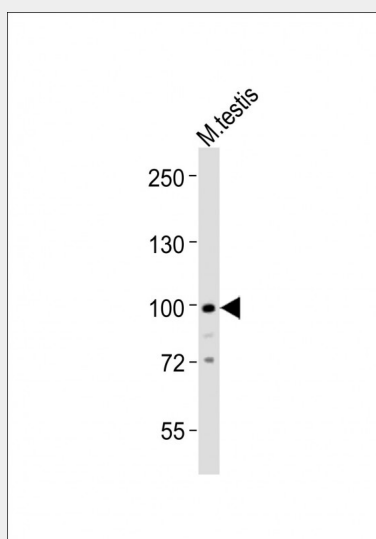
Cytoplasm. Nucleus.

Med15 Antibody (C-term) - Protocols

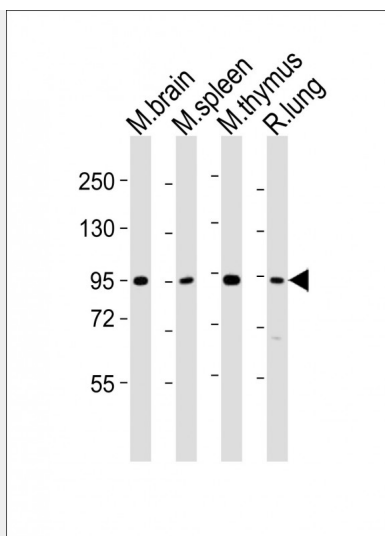
Provided below are standard protocols that you may find useful for product applications.

- [Western Blot](#)
- [Blocking Peptides](#)
- [Dot Blot](#)
- [Immunohistochemistry](#)
- [Immunofluorescence](#)
- [Immunoprecipitation](#)
- [Flow Cytometry](#)
- [Cell Culture](#)

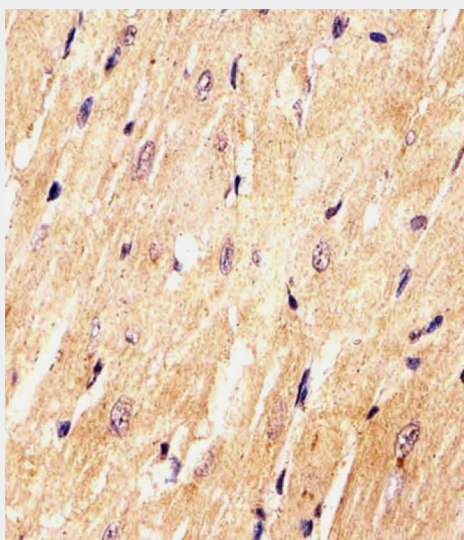
Med15 Antibody (C-term) - Images



Anti-Med15 Antibody (C-term) at 1:1000 dilution + mouse testis lysates Lysates/proteins at 20 µg per lane. Secondary Goat Anti-Rabbit IgG, (H+L), Peroxidase conjugated at 1/10000 dilution Predicted band size : 87 kDa Blocking/Dilution buffer: 5% NFDm/TBST.



All lanes : Anti-Med15 Antibody (C-term) at 1:2000 dilution Lane 1: mouse brain lysates Lane 2: mouse spleen lysates Lane 3: mouse thymus lysates Lane 4: rat lung lysates Lysates/proteins at 20 µg per lane. Secondary Goat Anti-Rabbit IgG, (H+L), Peroxidase conjugated at 1/10000 dilution Predicted band size : 87 kDa Blocking/Dilution buffer: 5% NFDM/TBST.



AP21208b staining Med15 in Mouse heart tissue sections by Immunohistochemistry (IHC-P - paraformaldehyde-fixed, paraffin-embedded sections). Tissue was fixed with formaldehyde and blocked with 3% BSA for 0.5 hour at room temperature; antigen retrieval was by heat mediation with a citrate buffer (pH6). Samples were incubated with primary antibody (1/25) for 1 hours at 37°C. A undiluted biotinylated goat polyvalent antibody was used as the secondary antibody.

Med15 Antibody (C-term) - Background

Component of the Mediator complex, a coactivator involved in the regulated transcription of nearly all RNA polymerase II-dependent genes. Mediator functions as a bridge to convey information from gene-specific regulatory proteins to the basal RNA polymerase II transcription machinery. Mediator is recruited to promoters by direct interactions with regulatory proteins and serves as a scaffold for the assembly of a functional preinitiation complex with RNA polymerase II and the general transcription factors. Required for cholesterol-dependent gene regulation. Positively regulates the Nodal signaling pathway (By similarity).

Med15 Antibody (C-term) - References

Berti L., et al. Genomics 74:320-332(2001).