

**NPY5R Antibody (Center)**  
**Purified Rabbit Polyclonal Antibody (Pab)**  
**Catalog # AP21217c****Specification**

---

**NPY5R Antibody (Center) - Product Information**

Application	WB,E
Primary Accession	<a href="#">Q15761</a>
Reactivity	Human
Host	Rabbit
Clonality	polyclonal
Isotype	Rabbit IgG
Calculated MW	50727

**NPY5R Antibody (Center) - Additional Information****Gene ID** 4889**Other Names**

Neuropeptide Y receptor type 5, NPY5-R, NPY-Y5 receptor, NPYY5-R, Y5 receptor, NPY5R, NPYR5

**Target/Specificity**

This NPY5R antibody is generated from a rabbit immunized with a KLH conjugated synthetic peptide between 305-341 amino acids from the Central region of human NPY5R.

**Dilution**

WB~~1:2000

E~~Use at an assay dependent concentration.

**Format**

Purified polyclonal antibody supplied in PBS with 0.09% (W/V) sodium azide. This antibody is purified through a protein A column, followed by peptide affinity purification.

**Storage**

Maintain refrigerated at 2-8°C for up to 2 weeks. For long term storage store at -20°C in small aliquots to prevent freeze-thaw cycles.

**Precautions**

NPY5R Antibody (Center) is for research use only and not for use in diagnostic or therapeutic procedures.

**NPY5R Antibody (Center) - Protein Information****Name** NPY5R**Synonyms** NPYR5**Function** Receptor for neuropeptide Y and peptide YY. The activity of this receptor is mediated by

G proteins that inhibit adenylate cyclase activity. Seems to be associated with food intake. Could be involved in feeding disorders.

**Cellular Location**

Cell membrane; Multi-pass membrane protein.

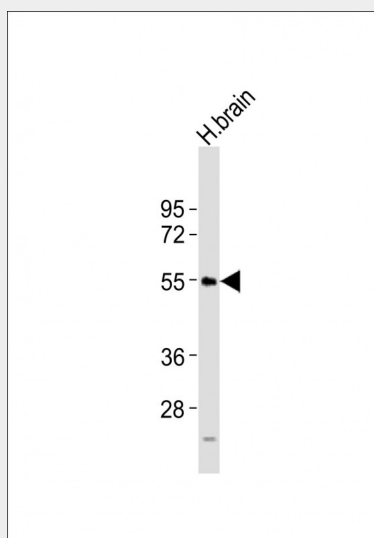
**Tissue Location**

Brain; hypothalamus.

**NPY5R Antibody (Center) - Protocols**

Provided below are standard protocols that you may find useful for product applications.

- [Western Blot](#)
- [Blocking Peptides](#)
- [Dot Blot](#)
- [Immunohistochemistry](#)
- [Immunofluorescence](#)
- [Immunoprecipitation](#)
- [Flow Cytometry](#)
- [Cell Culture](#)

**NPY5R Antibody (Center) - Images**

Anti-NPY5R Antibody (Center) at 1:2000 dilution + H. brain tissue lysates Lysates/proteins at 20 µg per lane. Secondary Goat Anti-Rabbit IgG, (H+L), Peroxidase conjugated at 1/10000 dilution Predicted band size : 51 kDa Blocking/Dilution buffer: 5% NFDm/TBST.

**NPY5R Antibody (Center) - Background**

Receptor for neuropeptide Y and peptide YY. The activity of this receptor is mediated by G proteins that inhibit adenylate cyclase activity. Seems to be associated with food intake. Could be involved in feeding disorders.

**NPY5R Antibody (Center) - References**

Hu Y., et al. J. Biol. Chem. 271:26315-26319(1996).

Gerald C.,et al.Nature 382:168-171(1996).  
Herzog H.,et al.Genomics 41:315-319(1997).  
Kopatz S.A.,et al.Submitted (JUN-2003) to the EMBL/GenBank/DDBJ databases.  
Hillier L.W.,et al.Nature 434:724-731(2005).