

NFKBIE Antibody (Center)
Purified Rabbit Polyclonal Antibody (Pab)
Catalog # AP21219c**Specification**

NFKBIE Antibody (Center) - Product Information

Application	WB,E
Primary Accession	O00221
Reactivity	Human
Host	Rabbit
Clonality	polyclonal
Isotype	Rabbit IgG
Calculated MW	52864

NFKBIE Antibody (Center) - Additional Information**Gene ID** 4794**Other Names**

NF-kappa-B inhibitor epsilon, NF-kappa-BIE, I-kappa-B-epsilon, Ikb-E, Ikb-epsilon, IkappaBepsilon, NFKBIE, IKBE

Target/Specificity

This NFKBIE antibody is generated from a rabbit immunized with a KLH conjugated synthetic peptide between 191-224 amino acids from the Central region of human NFKBIE.

Dilution

WB~~1:2000

E~~Use at an assay dependent concentration.

Format

Purified polyclonal antibody supplied in PBS with 0.09% (W/V) sodium azide. This antibody is purified through a protein A column, followed by peptide affinity purification.

Storage

Maintain refrigerated at 2-8°C for up to 2 weeks. For long term storage store at -20°C in small aliquots to prevent freeze-thaw cycles.

Precautions

NFKBIE Antibody (Center) is for research use only and not for use in diagnostic or therapeutic procedures.

NFKBIE Antibody (Center) - Protein Information**Name** NFKBIE**Synonyms** IKBE

Function Sequesters NF-kappa-B transcription factor complexes in the cytoplasm, thereby inhibiting their activity (PubMed:[9315679](#)). Sequestered complexes include NFKB1-RELA (p50-p65) and NFKB1-REL (p50- c-Rel) complexes (PubMed:[9135156](#), PubMed:[9315679](#)). Limits B-cell activation in response to pathogens, and also plays an important role in B-cell development (By similarity).

Cellular Location

Cytoplasm.

Tissue Location

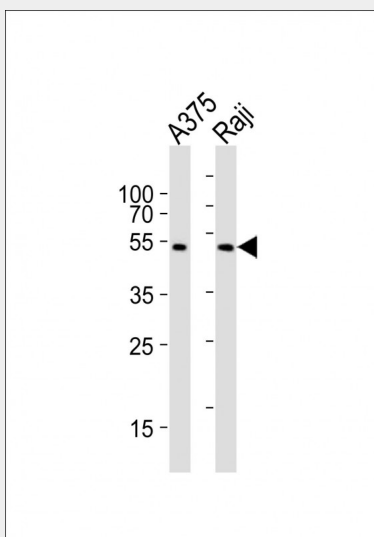
Highly expressed in spleen, testis and lung, followed by kidney, pancreas, heart, placenta and brain. Also expressed in granulocytes and macrophages

NFKBIE Antibody (Center) - Protocols

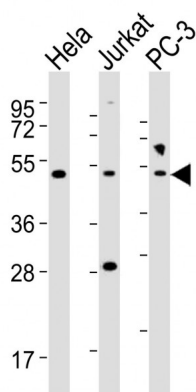
Provided below are standard protocols that you may find useful for product applications.

- [Western Blot](#)
- [Blocking Peptides](#)
- [Dot Blot](#)
- [Immunohistochemistry](#)
- [Immunofluorescence](#)
- [Immunoprecipitation](#)
- [Flow Cytometry](#)
- [Cell Culture](#)

NFKBIE Antibody (Center) - Images



All lanes : Anti-NFKBIE Antibody (Center) at 1:1000 dilution Lane 1: A375 whole cell lysates Lane 2: Raji whole cell lysates Lysates/proteins at 20 µg per lane. Secondary Goat Anti-Rabbit IgG, (H+L), Peroxidase conjugated at 1/10000 dilution Predicted band size : 53 kDa Blocking/Dilution buffer: 5% NFDM/TBST.



All lanes : Anti-NFKBIE Antibody (Center) at 1:2000 dilution Lane 1: HeLa whole cell lysates Lane 2: Jurkat whole cell lysates Lane 3: PC-3 whole cell lysates Lysates/proteins at 20 µg per lane. Secondary Goat Anti-Rabbit IgG, (H+L), Peroxidase conjugated at 1/10000 dilution Predicted band size : 53 kDa Blocking/Dilution buffer: 5% NFDM/TBST.

NFKBIE Antibody (Center) - Background

Inhibits NF-kappa-B by complexing with and trapping it in the cytoplasm. Inhibits DNA-binding of NF-kappa-B p50-p65 and p50-c-Rel complexes.

NFKBIE Antibody (Center) - References

Whiteside S.T.,et al.EMBO J. 16:1413-1426(1997).
Mungall A.J.,et al.Nature 425:805-811(2003).
Mural R.J.,et al.Submitted (JUL-2005) to the EMBL/GenBank/DDBJ databases.
Li Z.,et al.Mol. Cell. Biol. 17:6184-6190(1997).