

**UBE2G1 Antibody (N-term)**  
**Purified Rabbit Polyclonal Antibody (Pab)**  
**Catalog # AP2121a****Specification**

---

**UBE2G1 Antibody (N-term) - Product Information**

Application	WB, IHC-P,E
Primary Accession	<a href="#">P62253</a>
Other Accession	<a href="#">P62255</a> , <a href="#">P62254</a> , <a href="#">Q4R5Y8</a> , <a href="#">NP_003333</a>
Reactivity	Human, Mouse
Predicted	Monkey, Rat
Host	Rabbit
Clonality	Polyclonal
Isotype	Rabbit IgG
Calculated MW	19509
Antigen Region	1-30

**UBE2G1 Antibody (N-term) - Additional Information****Gene ID** 7326**Other Names**

Ubiquitin-conjugating enzyme E2 G1, E217K, UBC7, Ubiquitin carrier protein G1, Ubiquitin-protein ligase G1, Ubiquitin-conjugating enzyme E2 G1, N-terminally processed, UBE2G1, UBE2G

**Target/Specificity**

This UBE2G1 antibody is generated from rabbits immunized with a KLH conjugated synthetic peptide between 1-30 amino acids from the N-terminal region of human UBE2G1.

**Dilution**

WB~~1:1000

IHC-P~~1:50~100

E~~Use at an assay dependent concentration.

**Format**

Purified polyclonal antibody supplied in PBS with 0.09% (W/V) sodium azide. This antibody is prepared by Saturated Ammonium Sulfate (SAS) precipitation followed by dialysis against PBS.

**Storage**

Maintain refrigerated at 2-8°C for up to 2 weeks. For long term storage store at -20°C in small aliquots to prevent freeze-thaw cycles.

**Precautions**

UBE2G1 Antibody (N-term) is for research use only and not for use in diagnostic or therapeutic procedures.

**UBE2G1 Antibody (N-term) - Protein Information**

**Name** UBE2G1

**Synonyms** UBE2G

**Function** Accepts ubiquitin from the E1 complex and catalyzes its covalent attachment to other proteins. In vitro catalyzes 'Lys-48'-, as well as 'Lys-63'-linked polyubiquitination. May be involved in degradation of muscle-specific proteins. Mediates polyubiquitination of CYP3A4.

**Tissue Location**

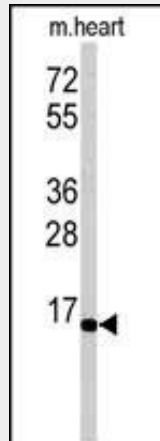
Widely expressed, mainly in skeletal muscle.

**UBE2G1 Antibody (N-term) - Protocols**

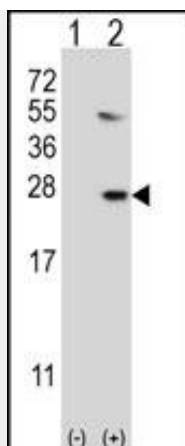
Provided below are standard protocols that you may find useful for product applications.

- [Western Blot](#)
- [Blocking Peptides](#)
- [Dot Blot](#)
- [Immunohistochemistry](#)
- [Immunofluorescence](#)
- [Immunoprecipitation](#)
- [Flow Cytometry](#)
- [Cell Culture](#)

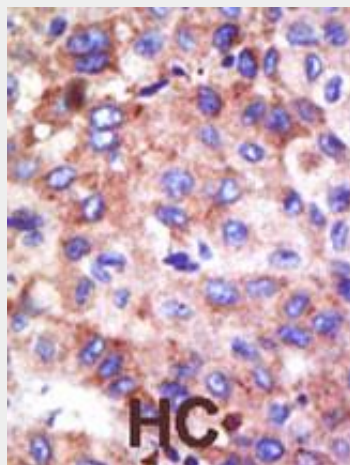
**UBE2G1 Antibody (N-term) - Images**



Western blot analysis of anti-UBE2G1 Antibody (N-term) (Cat.#AP2121a) in mouse heart tissue lysates (35ug/lane). UBE2G1 (arrow) was detected using the purified Pab.



Western blot analysis of UBE2G1 (arrow) using rabbit polyclonal UBE2G1 Antibody (R11) (Cat.#AP2121a). 293 cell lysates (2 ug/lane) either nontransfected (Lane 1) or transiently transfected (Lane 2) with the UBE2G1 gene.



Formalin-fixed and paraffin-embedded human cancer tissue reacted with the primary antibody, which was peroxidase-conjugated to the secondary antibody, followed by DAB staining. This data demonstrates the use of this antibody for immunohistochemistry; clinical relevance has not been evaluated. BC = breast carcinoma; HC = hepatocarcinoma.

#### **UBE2G1 Antibody (N-term) - Background**

The modification of proteins with ubiquitin is an important cellular mechanism for targeting abnormal or short-lived proteins for degradation. Ubiquitination involves at least three classes of enzymes: ubiquitin-activating enzymes, or E1s, ubiquitin-conjugating enzymes, or E2s, and ubiquitin-protein ligases, or E3s. UBE2G1 is a member of the E2 ubiquitin-conjugating enzyme family. The encoded protein shares 98-100% sequence identity with the zebrafish, frog, rat and mouse counterparts, which indicates that this enzyme is highly conserved in eukaryotes.

#### **UBE2G1 Antibody (N-term) - References**

Watanabe, T.K., et al., Cytogenet. Cell Genet. 74 (1-2), 146-148 (1996).